

GENERAL NOTES:

- CABLE 3 CONDUCTOR COPPER, 40 GAUGE, 220 MILS EPR INSULATION WITH GROUND CONDUCTOR, COPPER TAPE SHIELD, TYPE MV-105, PVC JACKET, 15KV 133%.
- CONNECTION (FINAL TIES) SHALL BE MADE BY OPERATING CONTRACTOR.
- FOR PARTS LISTING SEE DRAWING E5E-19329-C00 (EQUIVALENT PARTS ACCEPTABLE).
- APPROXIMATE COORDINATES 4887.0W, 2807.0S
- DUCT BANK PER SECTION 3 OF THIS DRAWING.
- TOP OF DUCT BANK SHALL BE 3'-0" BELOW FINISHED GRADE.
- SEE DRAWING CSD-FA5270-A01 FOR DETAILS, GROUNDING ELECTRODE CONDUCTOR ENTERS SECONDARY COMPARTMENT THRU PAD.
- EACH 4" GALVANIZED RIGID STEEL CONDUIT DUCT BANK. SEE SECTION 2 THIS DRAWING. ALL DUCTS SHALL BE GALVANIZED RIGID STEEL CONDUIT CONTINUOUS FROM END TO END.
- ARRESTOR, PDV-100
- POLE VERTICAL MOUNT, 90amp SWITCH, S & C #17 512RA, USE CONNECTORS PROVIDED WITH SWITCH.
- DUCT BANK SECTION 3 THIS DRAWING. TOP OF PRIMARY DUCT BANK SHALL BE 3'-0" MINIMUM BELOW FINISHED GRADE FOR SEPARATION FROM GAS LINE.
- COORDINATE STRUCTURAL DRAWINGS WITH OTHER DISCIPLINE DRAWINGS FOR CLEARANCES AND PROPER PLACEMENT OF CONDUITS, GROUNDING, ETC.
- #40 AWG COPPER, BARE, TO BE CONNECTED TO BUILDING STRUCTURE GROUND AT EACH END.
- CONDUITS SHALL HAVE THREADED END ACCESSIBLE AT CONCRETE SURFACE.
- GROUNDING SYSTEM SHALL MEET THE MINIMUM REQUIREMENTS OF THE NATIONAL ELECTRIC CODE (NEC).
- GROUND GRID SHALL BE #40 BARE COPPER. GROUND ROD LOCATION MAY BE VARIED WITH APPROVAL OF CONSTRUCTION ENGINEER. GROUND GRID CONDUCTORS SHALL BE LOCATED 18" FROM EDGE OF PAD.
- GROUND CONNECTIONS SHALL BE EXOTHERMIC WELDS OR COMPRESSION TYPE OF A UL LISTED TYPE FOR UNDERGROUND. INSTALLATION SHALL COMPLY WITH MANUFACTURER'S INSTRUCTIONS.
- GROUNDING ELECTRODE CONDUCTOR, #30 AWG (MINIMUM) STRANDED COPPER FOR CONNECTION TO TRANSFORMER GROUND PAD IN SECONDARY COMPARTMENT.
- INSULATED THROAT MALLEABLE IRON THREADED, CROUSE-HINDS GLL 100 OR EQUAL.
- GROUND ROD, 3/4" X 16 FL, TYPICAL. GROUND RODS SHALL BE COPPER CLAD STEEL, UL LISTED.
- END CONDUIT 18" ABOVE FINISHED GRADE WITH THREADED COUPLING FOR EXTENSION.
- END OF DUCT BANK TO BE 12" ABOVE GRADE WITH THREADED COUPLING.
- WARNING TAPE, RED, 6" WIDE WITH BLACK LETTERS, "WARNING BURIED ELECTRIC LINE" 12" BELOW GRADE, CONTINUOUS ALONG DUCT BANK.
- BLACKBURN HI TAP, WR285 OR EQUAL.
- BURNDY STRAIN CLAMP CUW285I OR EQUAL.
- INSTALL POWER MONITOR ON SOUTH SIDE OF TRANSFORMER CABINET. MONITOR WILL BE CONNECTED TO CURRENT TRANSFORMERS (CTS) TO BE INSTALLED INTERNALLY TO TRANSFORMER (3 TOTAL).
- TOP OF DUCT BANK SHALL BE 2'-6" BELOW FINISHED GRADE.
- TRANSFORMER PAD LOCATION MAY BE ADJUSTED TO AVOID INTERFERENCES. COORDINATE WITH CONSTRUCTION ENGINEER FOR FINAL LOCATION.

REFERENCE DRAWINGS
E5E-19329-C00
B1-4-E

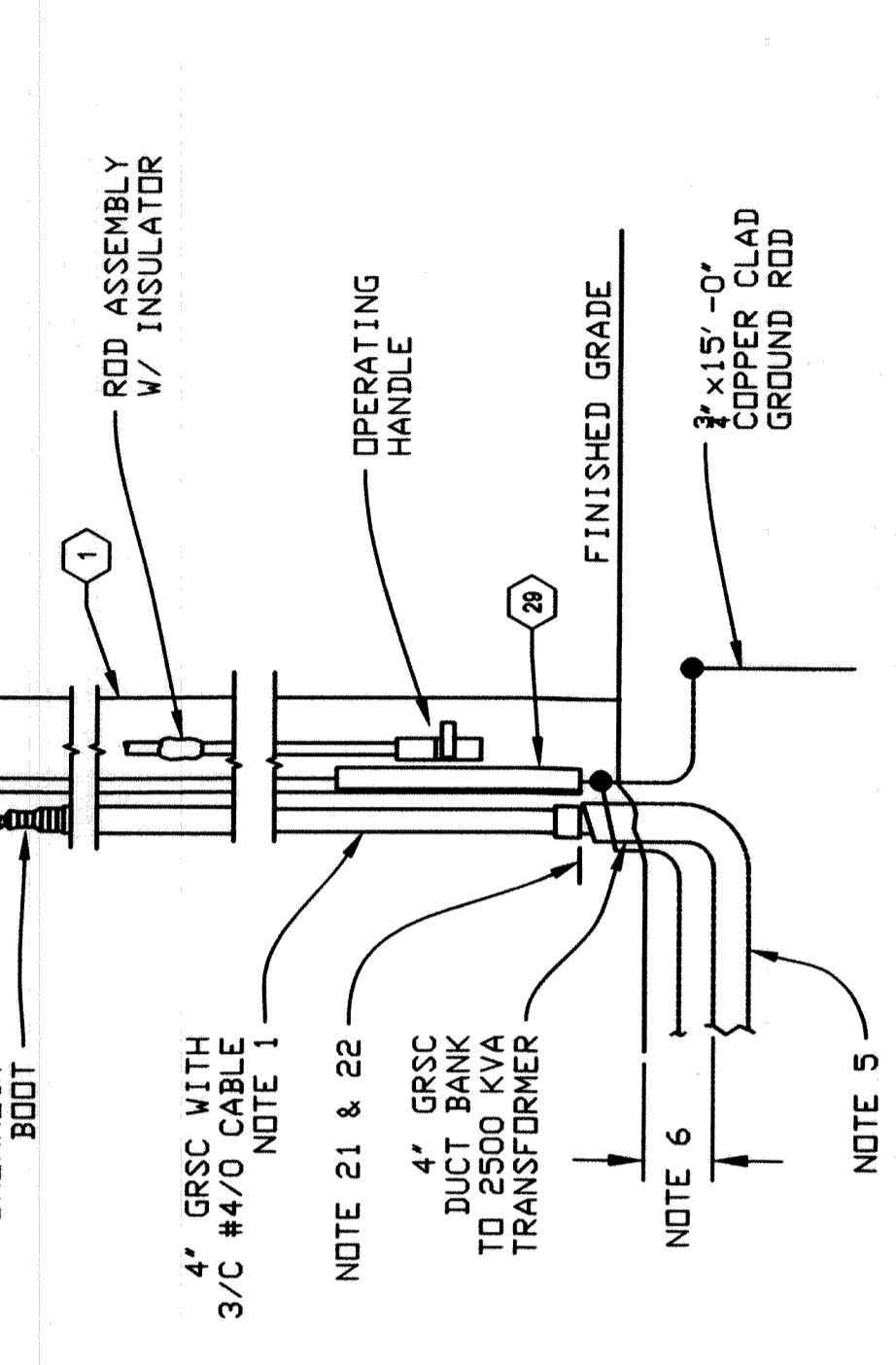
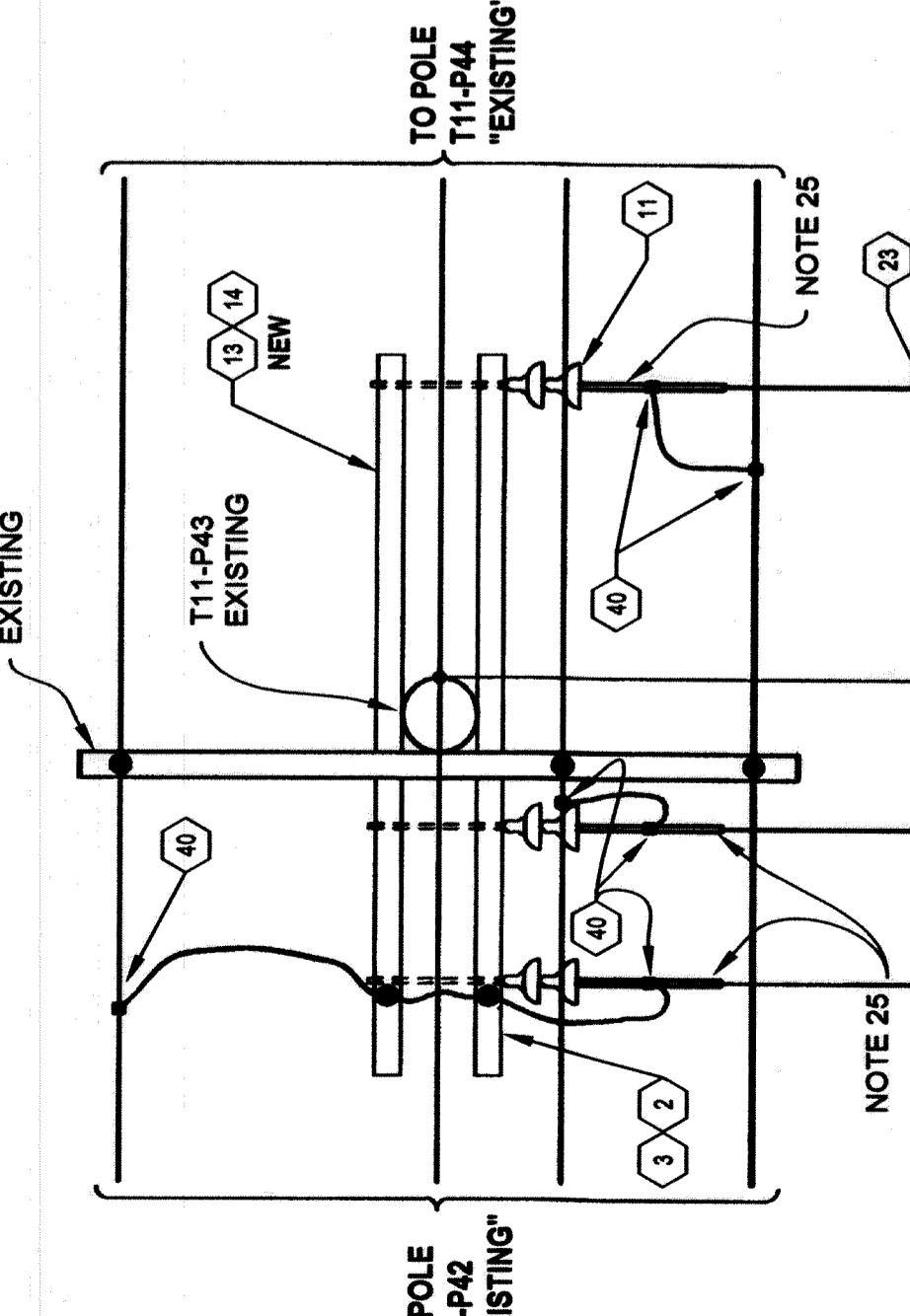
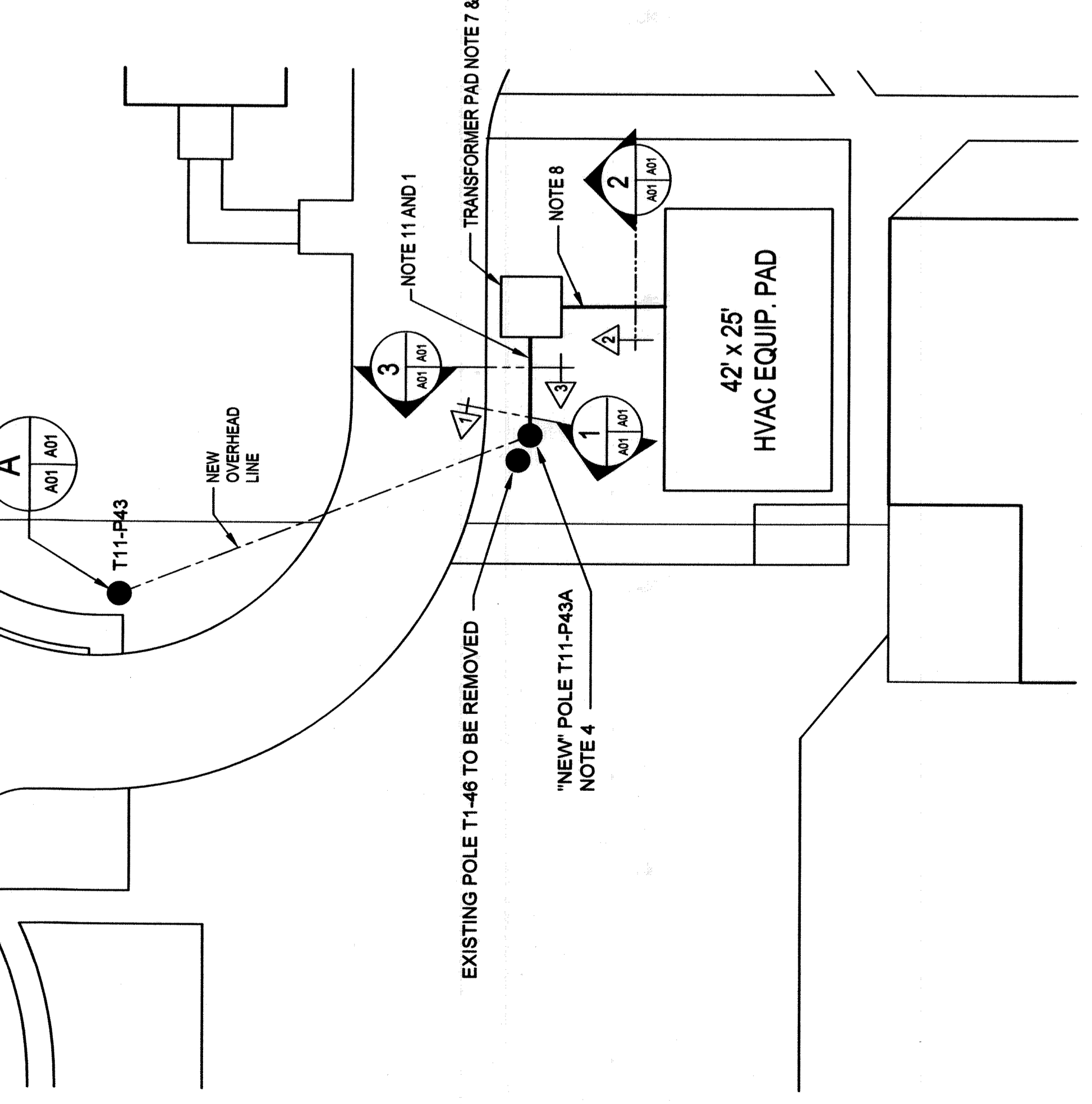
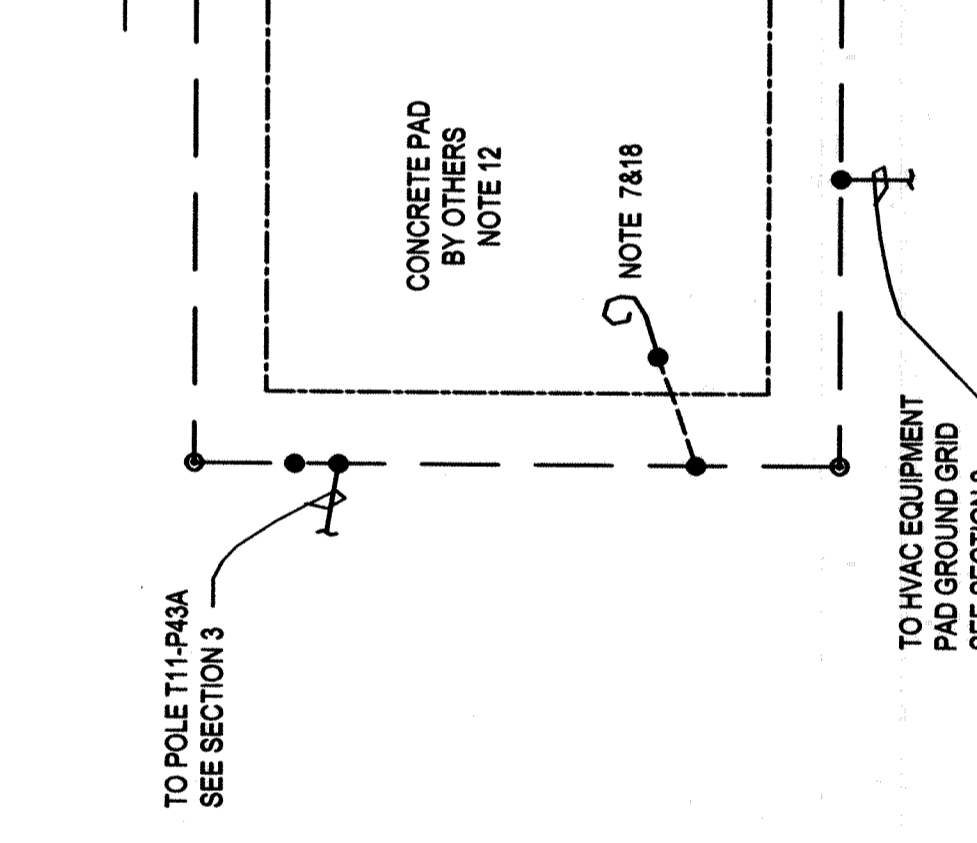
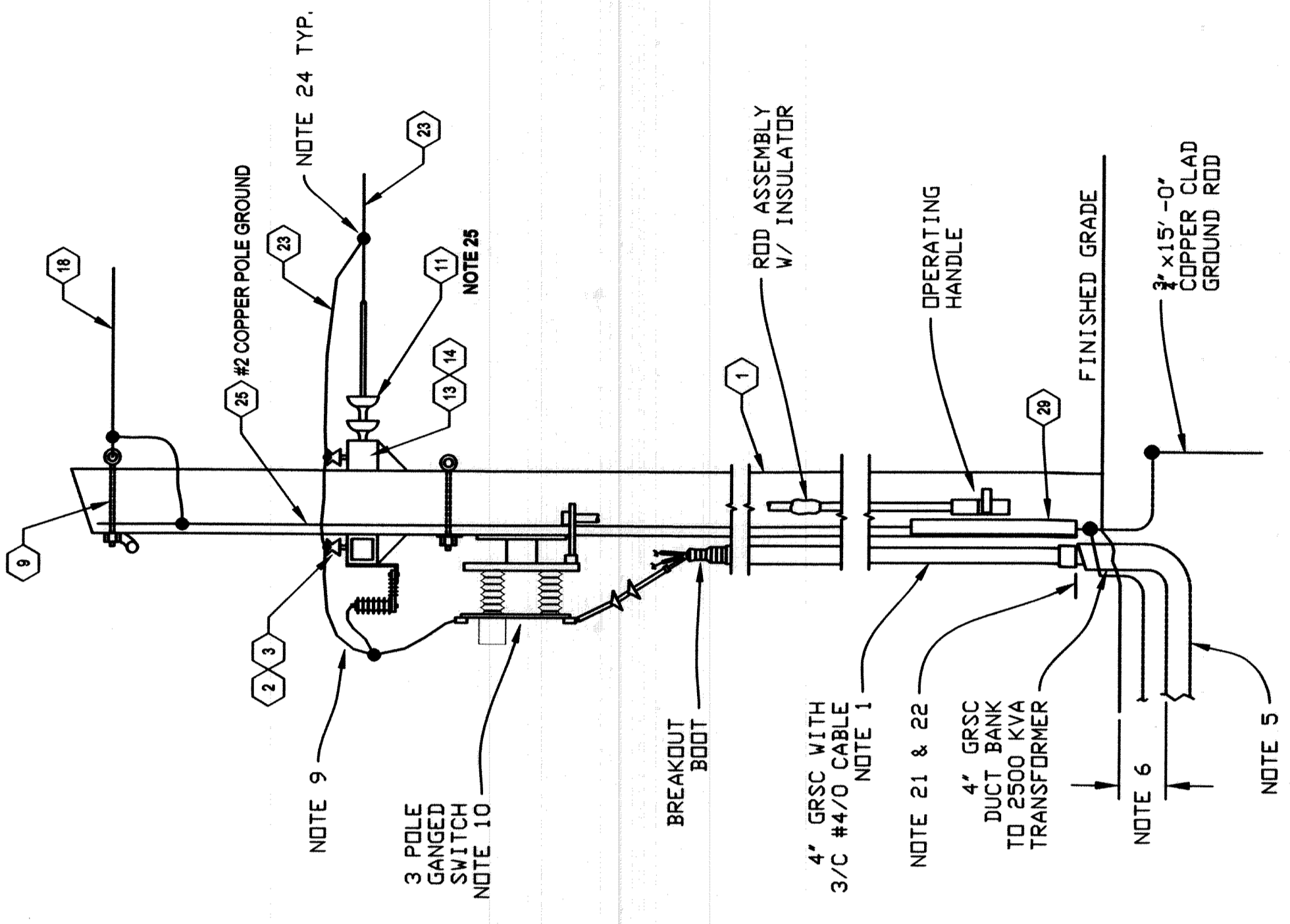
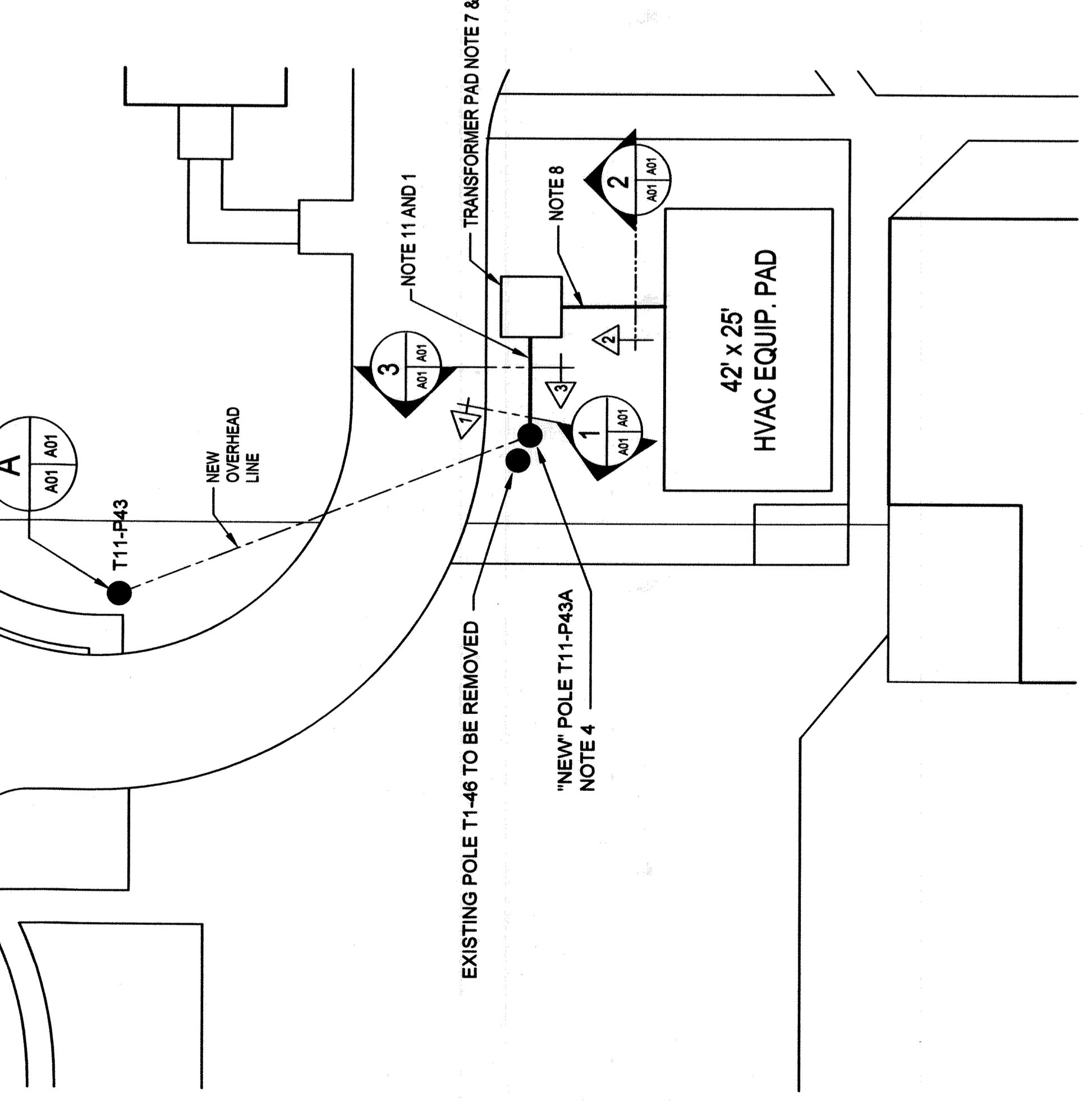
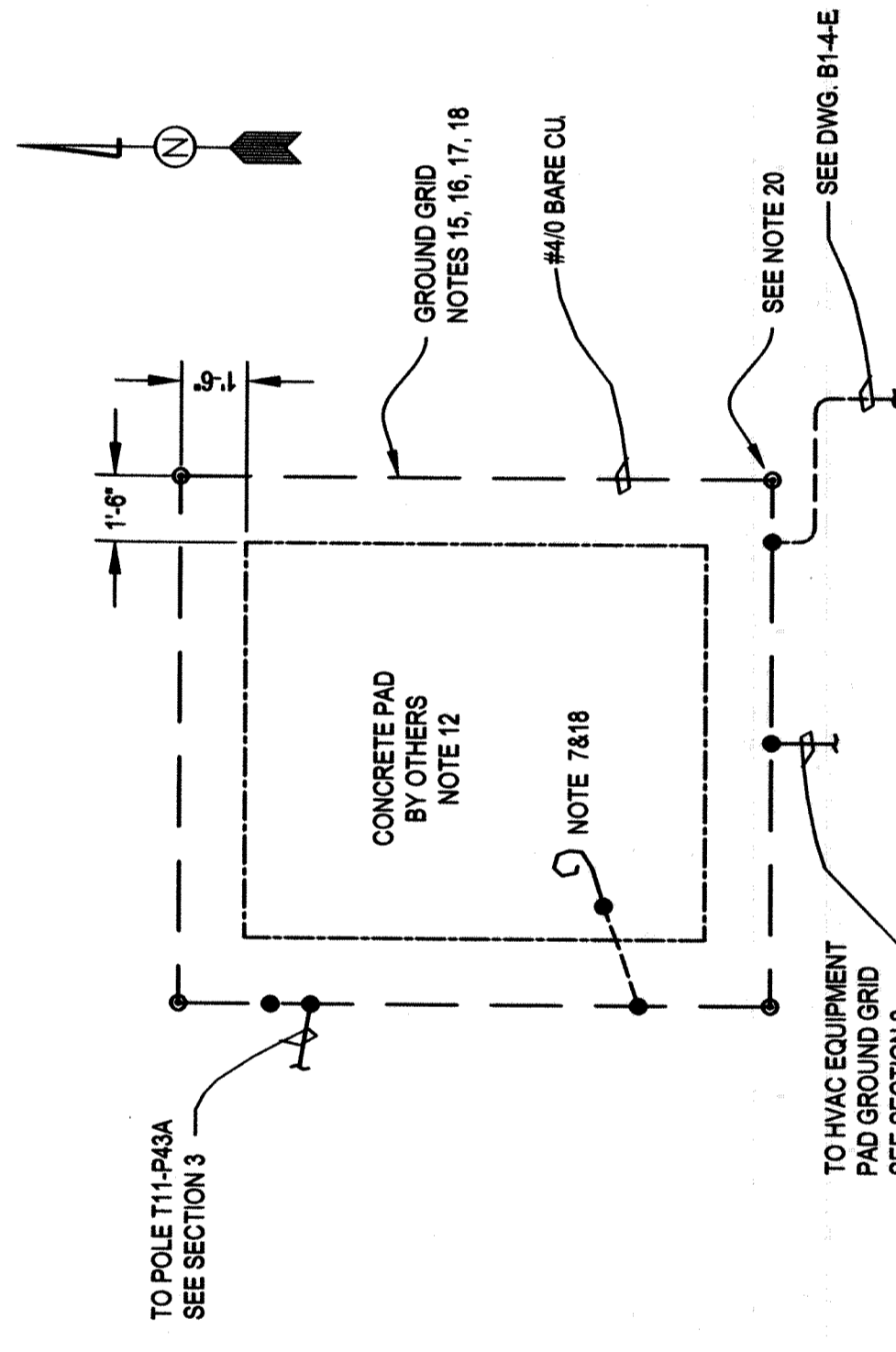
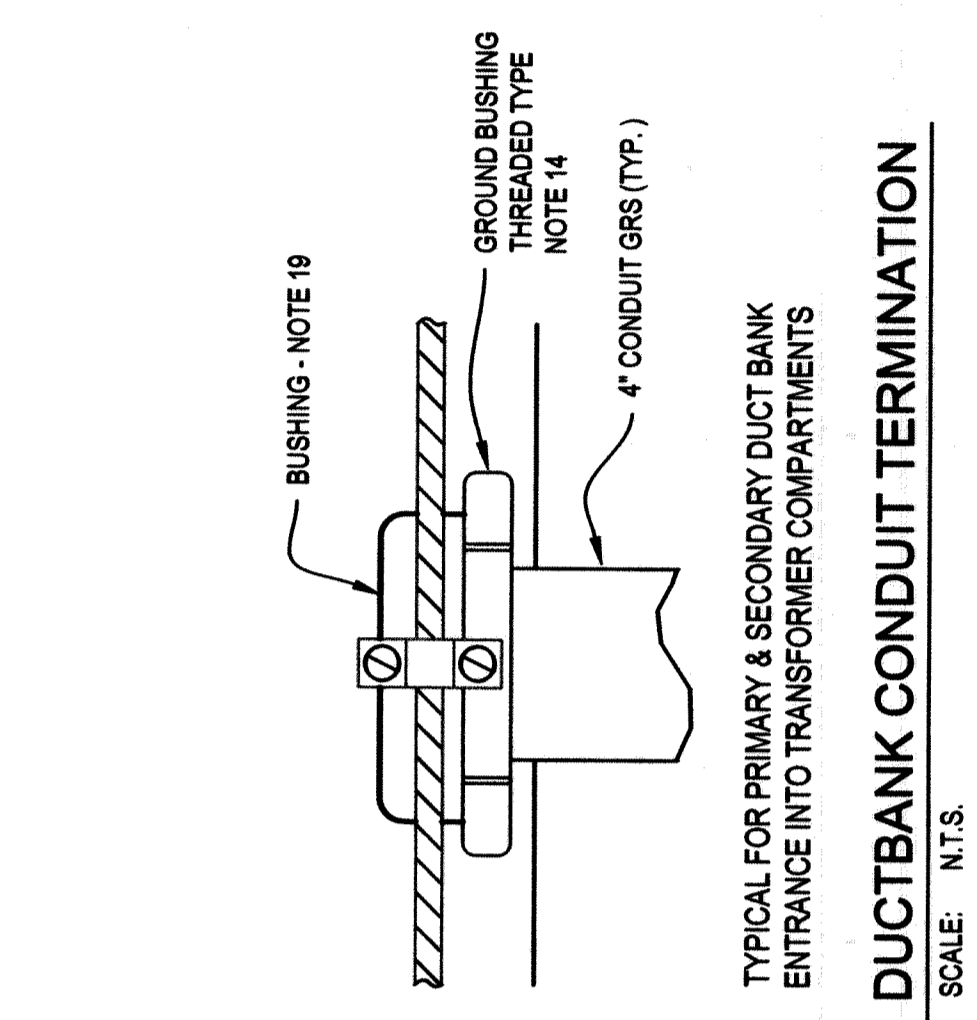
**FOUR RIVERS
NUCLEAR PARTNERSHIP, LLC**
DOE PRIME CONTRACT # DE-EM000485

C-100 HVAC UPGRADE
EQUIPMENT PLAN
ELECTRICAL SECTIONS & DETAILS

PRIORITY 3

SCALE	PLANT	BLDG	FL	CLASS
	PGDP	AREA	X	U
ID				REV
FA5270				0

E5D-FA5270-A01



SEE MATERIAL LIST ON DWG. E5E-19329-C00

REV. NO.	ISSUE / REVISION DESCRIPTION	DATE	DRW	CHKR	RE	TR	APPD	REVISION OR ISSUE APPROVALS	DATE
0	CERTIFIED FOR CONSTRUCTION FOR ESO FA5270								
1									
2									
3									
4									
5									
6									
7									
8									
9									
10									

NO REPRESENTATION OR WARRANTY, EXPRESSED OR IMPLIED, IS MADE THAT THE USE OR DISCLOSURE OF ANY INFORMATION, APPARATUS, METHOD OR PROCESS DISCLOSED IN THESE DRAWINGS MAY NOT INFRINGE THE PATENT RIGHTS OF ANY OTHER PARTY. THE USER OF THESE DRAWINGS SHALL BE RESPONSIBLE FOR OBTAINING ALL NECESSARY INFORMATION, APPARATUS, METHOD OR PROCESS DISCLOSED IN THESE DRAWINGS.

SECTION AND DETAIL KEY

SECTION NUMBER OR DETAIL LETTER
DRAWING ON WHICH SECTION OR DETAIL IS SHOWN

TOLERANCES UNLESS OTHERWISE SPECIFIED ± 1/8" FRACTIONS ± 1/16" DECIMALS BREAK SHARP EDGES MAX. FINISH

THIS DRAWING IS THE PROPERTY OF FOUR RIVERS NUCLEAR PARTNERSHIP, LLC. IT IS TO BE USED ONLY FOR THE PROJECT AND LOCATION SPECIFIED HEREON. IT IS NOT TO BE REPRODUCED, COPIED, OR TRANSMITTED IN ANY FORM OR BY ANY MEANS, ELECTRONIC OR MECHANICAL, INCLUDING PHOTOCOPYING, RECORDING, OR BY ANY INFORMATION STORAGE AND RETRIEVAL SYSTEM, WITHOUT THE WRITTEN PERMISSION OF FOUR RIVERS NUCLEAR PARTNERSHIP, LLC.