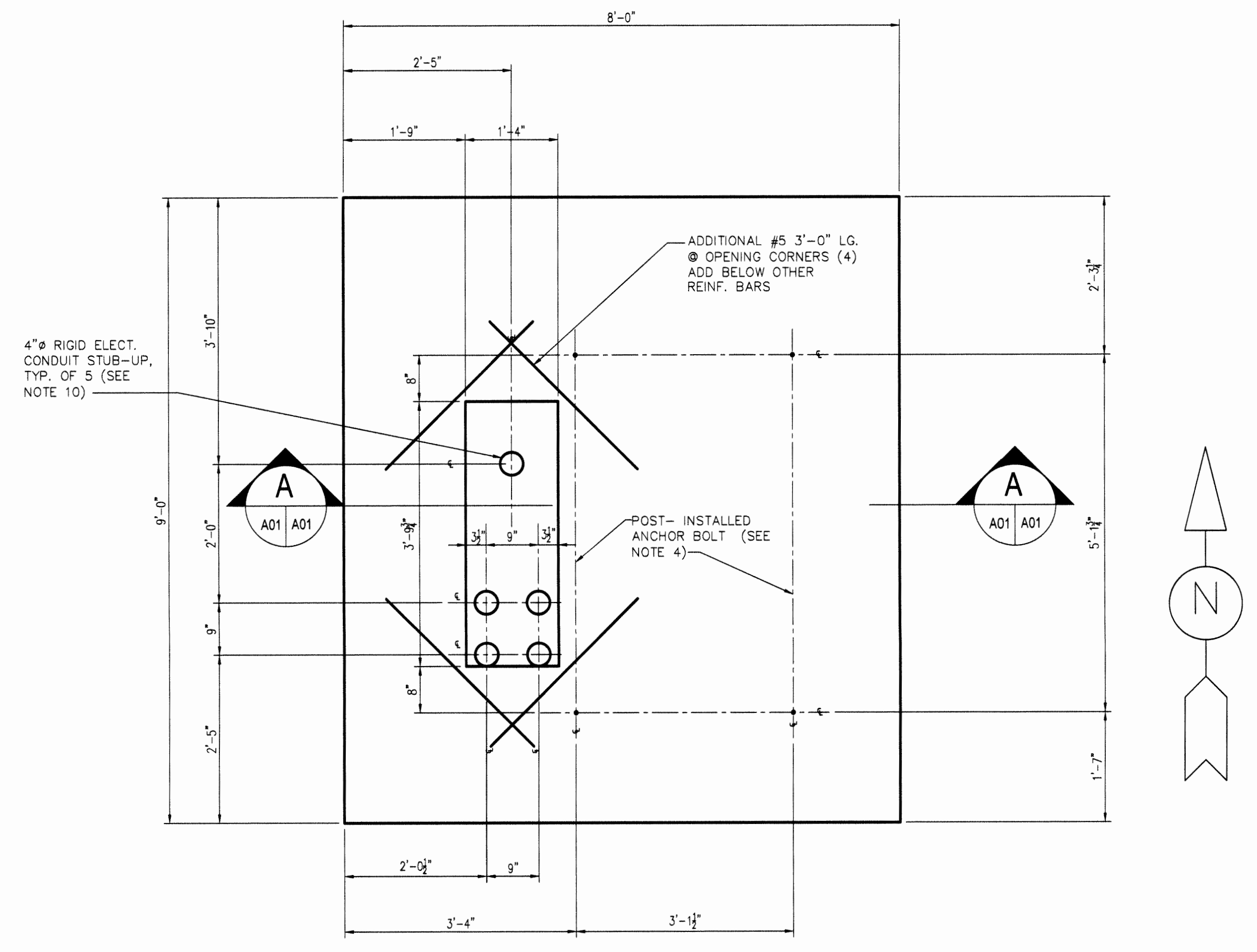


TRANSFORMER PAD

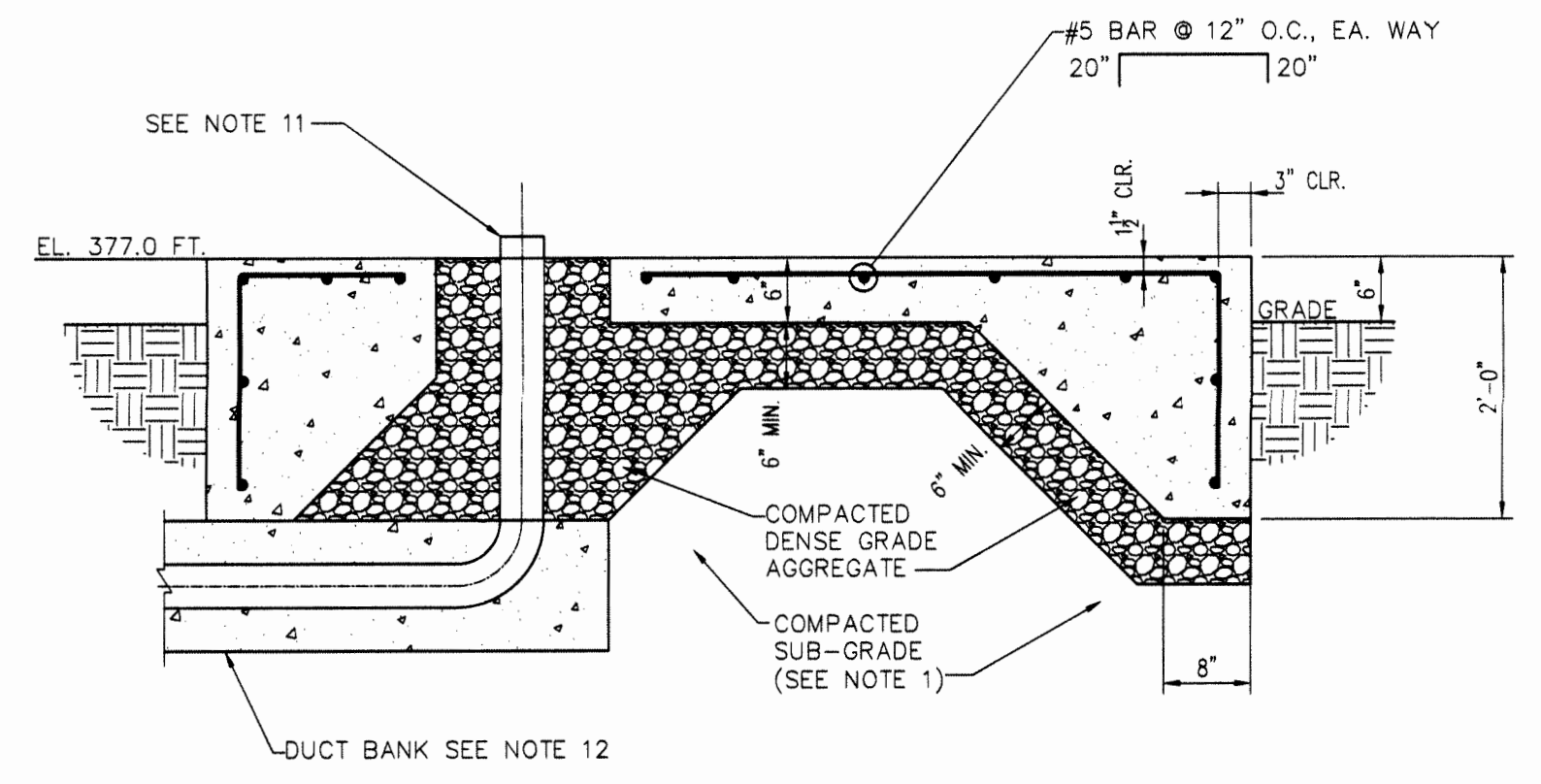
C-101

LOCATION PLAN



TRANSFORMER PAD PLAN VIEW

SCALE: 3/4" = 1'-0"



SECTION

SCALE: 3/4" = 1'-0"

NOTES

1. SUBGRADE SHALL BE MECHANICALLY TAMPED WITH NO STANDING WATER OR MUD.
2. MECHANICALLY TAMP DENSE GRADED AGGREGATE BASE MATERIAL. MINIMUM BASE THICKNESS IS 6 INCHES. BACKFILL AREA ADJACENT TO ELECTRICAL CONDUIT FULL DEPTH.
3. SLOPE FINISHED GRADE TO DRAIN AWAY FROM TRANSFORMER PAD.
4. POST INSTALLED ANCHOR SHALL BE 3/8" x 6" LG. HILTI QUICK BOLT TZ WITH AN EMBEDMENT DEPTH OF 4". INSTALL IN ACCORDANCE WITH MANUFACTURER WRITTEN INSTRUCTIONS.
5. CONCRETE CONSTRUCTION SHALL COMPLY WITH ACI 318, ACI 308R AND ACI 301.
6. COMPRESSIVE STRENGTH FOR CONCRETE PAD SHALL BE 4000 PSI AT 28 DAYS.
7. CLEAR CONCRETE COVER SHALL BE 1 1/2", EXCEPT 3" CLEAR COVER WHERE CONCRETE IS CAST AGAINST EARTH.
8. REINFORCING STEEL BARS SHALL BE GRADE 60, DEFORMED BARS, CONFORMING TO ASTM A615.
9. FORM ALL EXPOSED CORNERS OF CONCRETE WITH 1/4" x 45° CHAMFER.
10. VERIFY SIZE AND LOCATION OF ALL ELECTRICAL EMBEDDED CONDUITS WITH ELECTRICAL DRAWINGS.
11. LEAVE THREADED LENGTH TO ACCEPT GROUNDING BUSHING. SEE DETAILS D & E ON ESD-FA5270-A01.
12. DUCT BANK SHALL COMPLETELY ENCASE CONDUITS IN CONCRETE FOR THE FULL LENGTH. CONCRETE COMPRESSIVE STRENGTH FOR DUCT BANK SHALL BE 3000 PSI @ 28 DAYS.

SECTION NUMBER OR DETAIL LETTER	TOLERANCES UNLESS OTHERWISE SPECIFIED
DRAWING ON WHICH SECTION OR DETAIL IS TAKEN	FRACTIONS ± 1/16"
DRAWING ON WHICH SECTION OR DETAIL IS SHOWN	XX DECIMALS ± 1/32"
	XXX DECIMALS ± 1/64"
	ANGLES BREAK SHARP EDGES MAX. FINISH

"NO REPRESENTATION OR WARRANTY, EXPRESSED OR IMPLIED, IS MADE THAT THE USE OR DISCLOSURE OF ANY INFORMATION, APPARATUS, METHOD OR PROCESS DISCLOSED IN THESE DRAWINGS MAY NOT INFRINGE PRIVATE RIGHTS OF OTHERS. NO LIABILITY IS ASSUMED WITH RESPECT TO THE USE OF, OR FOR DAMAGES RESULTING FROM THE USE, ANY INFORMATION, APPARATUS, METHOD OR PROCESS DISCLOSED IN THESE DRAWINGS."

THIS DRAWING PRODUCED ON AUTOCAD DO NOT REVISE MANUALLY

REV. NO.	ISSUE / REVISION DESCRIPTION	DATE	DRW	CHKR	RE	TR	APPD
0	CERTIFIED FOR CONSTRUCTION FOR ESO FA5270, FCT-CCA-FA5270-001		X	X	X	X	X

PE

DRW	Eddie Holland	1/30/19
CHKR	[Signature]	1/31/19
REC	[Signature]	1/31/19
TR	N/A	N/A
APPD	[Signature]	1/31/19

FOUR RIVERS NUCLEAR PARTNERSHIP, LLC
DOE PRIME CONTRACT # DE-EM0004895

C-100 HVAC UPGRADE TRANSFORMER PAD DETAILS

NON-ESSENTIAL

SCALE AS NOTED	PLANT PGDP	BLDG AREA	FL NA	CLASS U
ID NA	C5D-FA5270-A01			REV 0