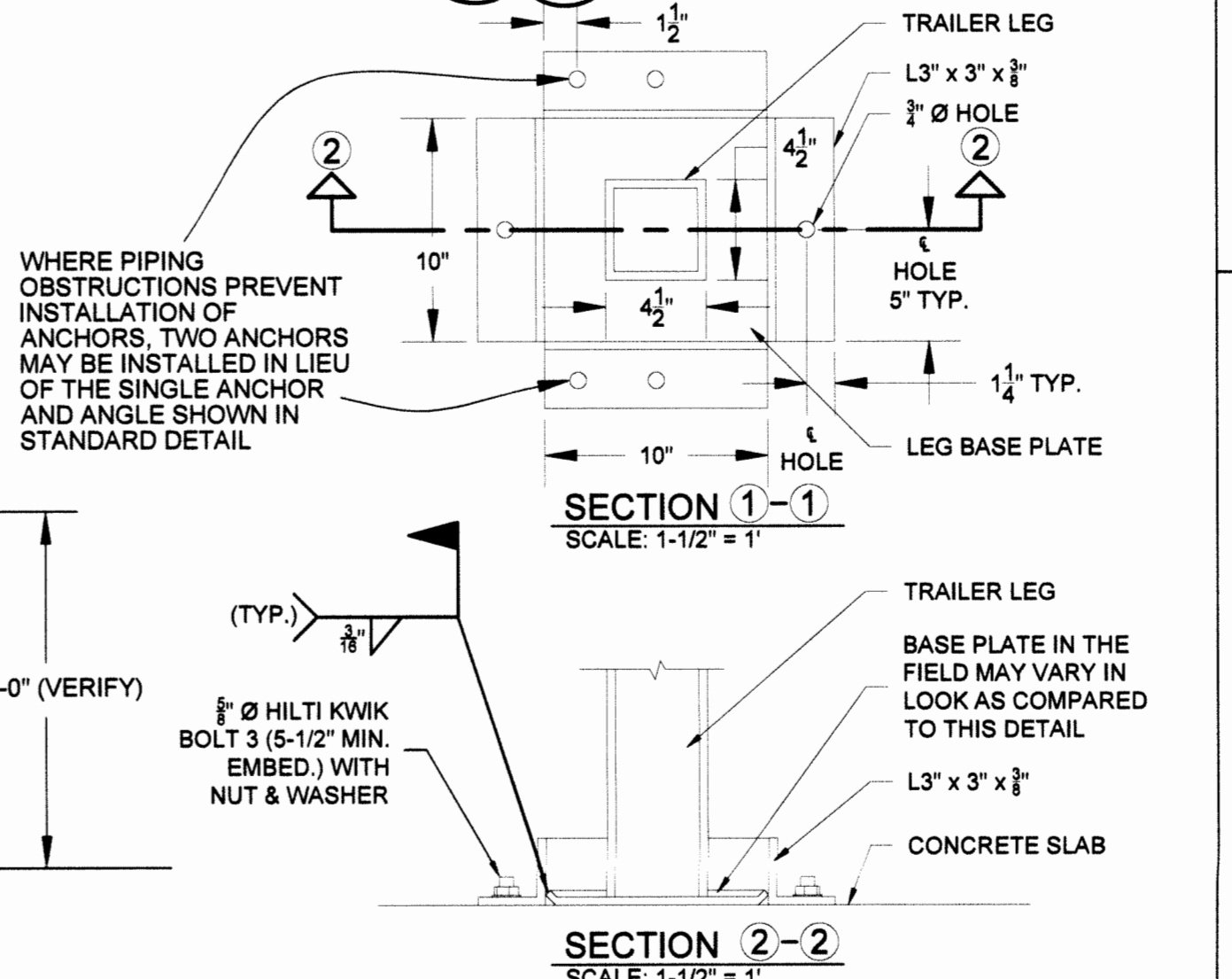


**ANCHOR LOCATION DETAIL - TRAILER SIDE VIEW**  
SCALE: 1/2" = 1'-0"



**NOTES:**  
1. IF THE TRAILER BASE IS LARGER THAN 10", THE LENGTH OF ANGLE WILL STILL BE 10" AND WILL BE CENTERED ON BASE PLATE.

NOTE: THE TRAILER FRAME SHOWN ON THIS DRAWING INDICATES A GENERAL CONFIGURATION. CONFIRM FINAL CONNECTION LOCATIONS WITH ENGINEERING PRIOR TO INSTALLATION.

**REFERENCE DRAWINGS**  
C7DC6000A003  
M7DC6000A001  
M7DC6000A002  
M7DC6000A003  
M7DC6000A004  
S7DC6000A001  
S7DC6000A003  
S7DC6000A005  
S7DC6000A006  
S7DC6000A007

**PRIORITY 3**  
**FOUR RIVERS NUCLEAR PARTNERSHIP, LLC**  
DOE PRIME CONTRACT # DE-EM0004895

**FLUOR. PADUCAH DEACTIVATION PROJECT**  
DOE Prime Contract #DE-DT0007774

**U.S. DEPARTMENT OF ENERGY**  
PADUCAH, PORTSMOUTH PROJECT OPERATIONS,  
PADUCAH GASEOUS DIFFUSION PLANT

**LATA Environmental Services of Kentucky, LLC**  
managed for the DEPARTMENT OF ENERGY under U.S. GOVERNMENT contract DE-AC30-10CC40020 Paducah, Kentucky

DOE CONTRACT NO. DE-AC30-10CC40020

PROJECT NAME:  
**STEAM PACKAGE BOILERS AND PERMITS**

TITLE:  
**C-600 AREA PACKAGE BOILERS UTILITY BRIDGE AND EQUIPMENT ANCHOR DETAIL SHEET 4**

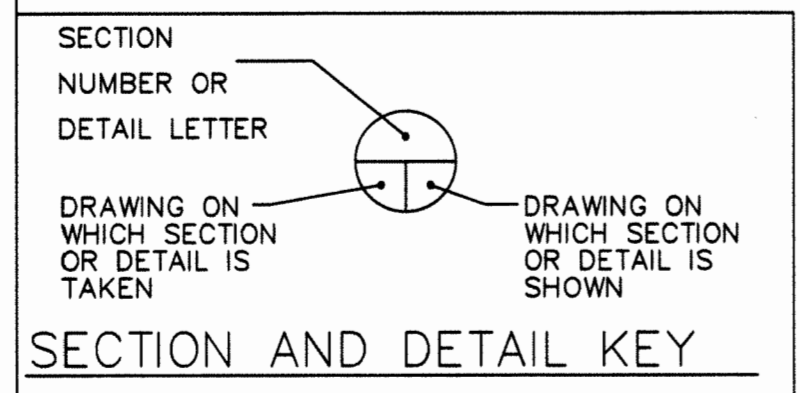
EDCS CAD FILENAME: S7DC6000A008 rev4.dwg BUILDING: C-600 PLANT: PGDP CLASS: U

SCALE: AS SHOWN DRAWING NUMBER: S7DC6000A008 REV: 4

REV. 4
DRW. <i>Robin Hancock</i> 3/20/19
CHKR. <i>John DeWitt</i> 03/20/19
R.E. <i>John DeWitt</i> 03/20/19
T.R. N/A
APPD. <i>John DeWitt</i> 3/23/19
DRAWING APPROVALS DATE

REV	DATE	DESCRIPTION	DRAWN BY	DRAFT CHK	PROJ ENGR	LEAD ENGR	CONF NUCL SFTY	FAC MGR	E&S MGR
3	KTW	KK	KK	--	KAS	3/9/16			

REV.	DATE	DESCRIPTION	DRAWN BY	DRAFT CHK	PROJ ENGR	LEAD ENGR	CONF NUCL SFTY	FAC MGR	E&S MGR
4		CERTIFIED FOR CONSTRUCTION FOR ESO FA5270	X	X	X	X	X	X	X
3		AS BUILT ENTIRE DRAWING FOR ESO-FA1620, INCORPORATED FA1	X	X	X	X	X	X	X
2	7/20/15	ISSUED FOR CONSTRUCTION	KTW	JKT	TDS	JKT	JBW	JRW	HWS
1	4/14/15	ISSUED FOR CONSTRUCTION	KTW	JKT	TDS	JKT	JBW	JRW	HWS
0	3/20/15	ISSUED FOR CONSTRUCTION	KTW	TAW	TDS	TAW	JBW	RGS	KLH



NO REPRESENTATION OR WARRANTY, EXPRESSED OR IMPLIED, IS MADE AS TO THE ACCURACY, COMPLETENESS OR USEFULNESS OF THE INFORMATION OR STATEMENTS CONTAINED IN THESE DRAWINGS, OR THAT THE USE OR DISCLOSURE OF ANY INFORMATION, APPARATUS, METHOD, OR PROCESS DISCLOSED IN THESE DRAWINGS MAY NOT INFRINGE PRIVATE RIGHTS OF OTHERS. NO LIABILITY IS ASSUMED WITH RESPECT TO THE USE OF, OR FOR DAMAGES RESULTING FROM THE USE OF ANY INFORMATION, APPARATUS, METHOD, OR PROCESS DISCLOSED IN THESE DRAWINGS. DRAWINGS MADE AVAILABLE FOR INFORMATION TO BIDDER ARE TO BE USED FOR OTHER PURPOSES AND ARE TO BE RETURNED UPON REQUEST OF THE FORWARDING CONTRACTOR.