

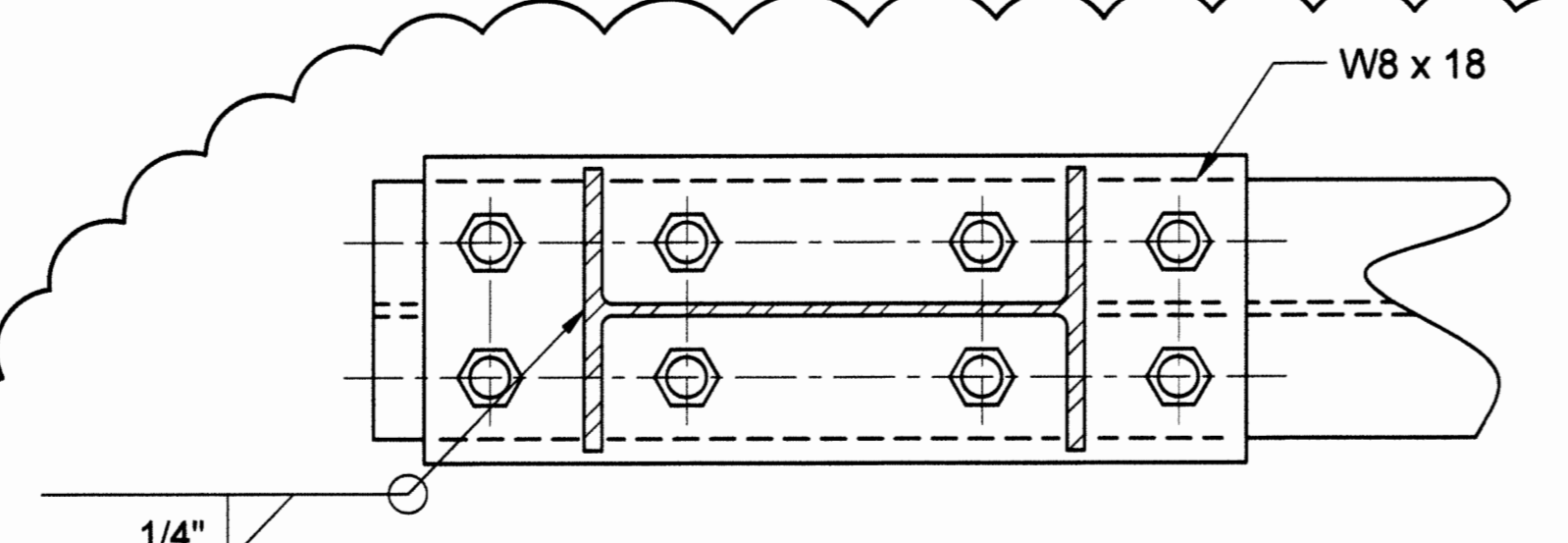
6 5 4 3 2 1

D D

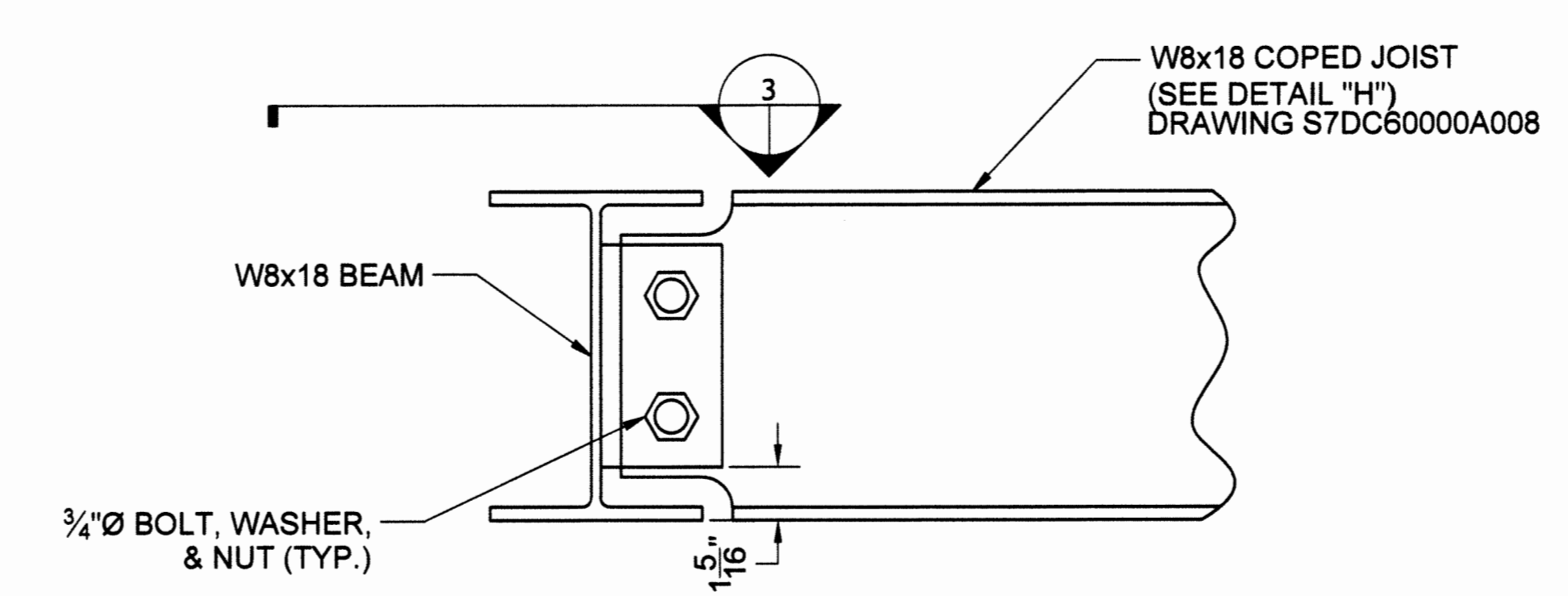
C C

B B

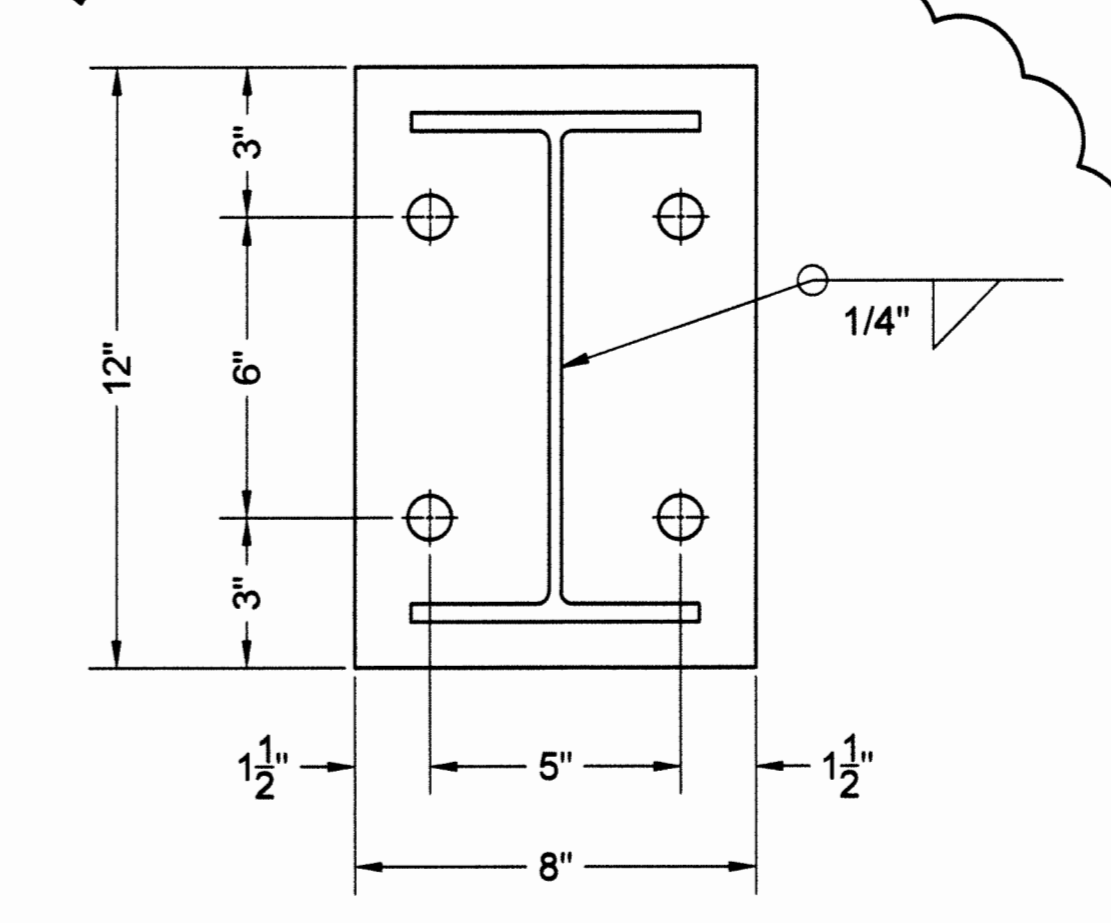
A A



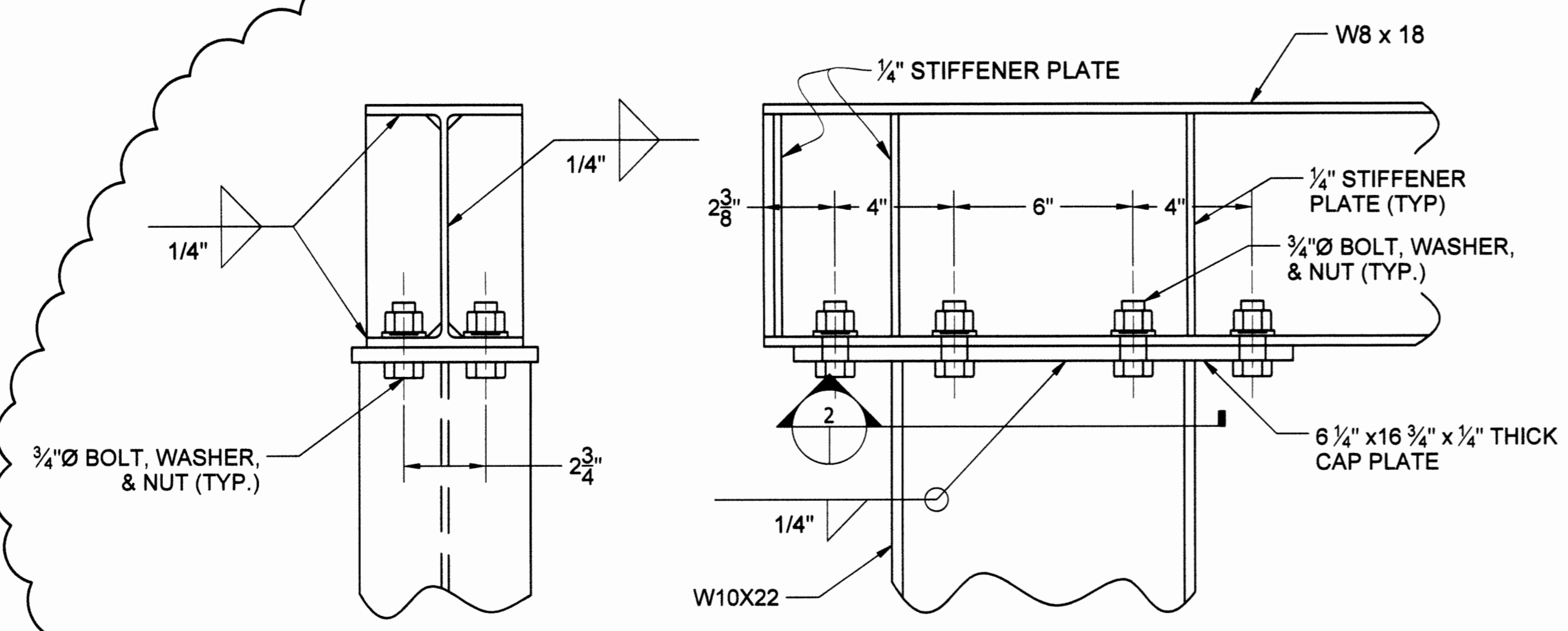
2 COLUMN/BEAM SECTION
Scale: 3" = 1'



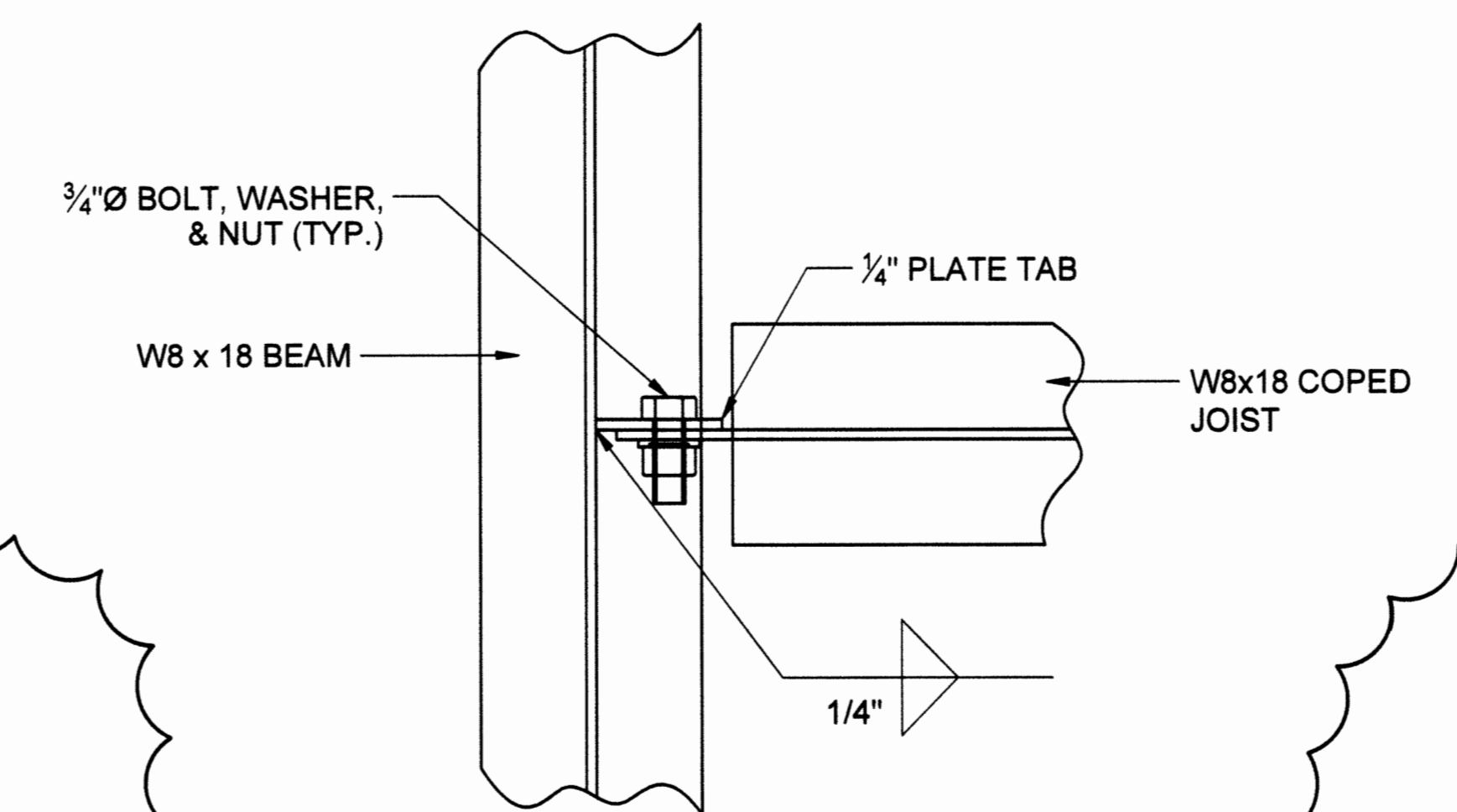
D MAIN BEAM/JOIST CONNECTION
Scale: 3" = 1'



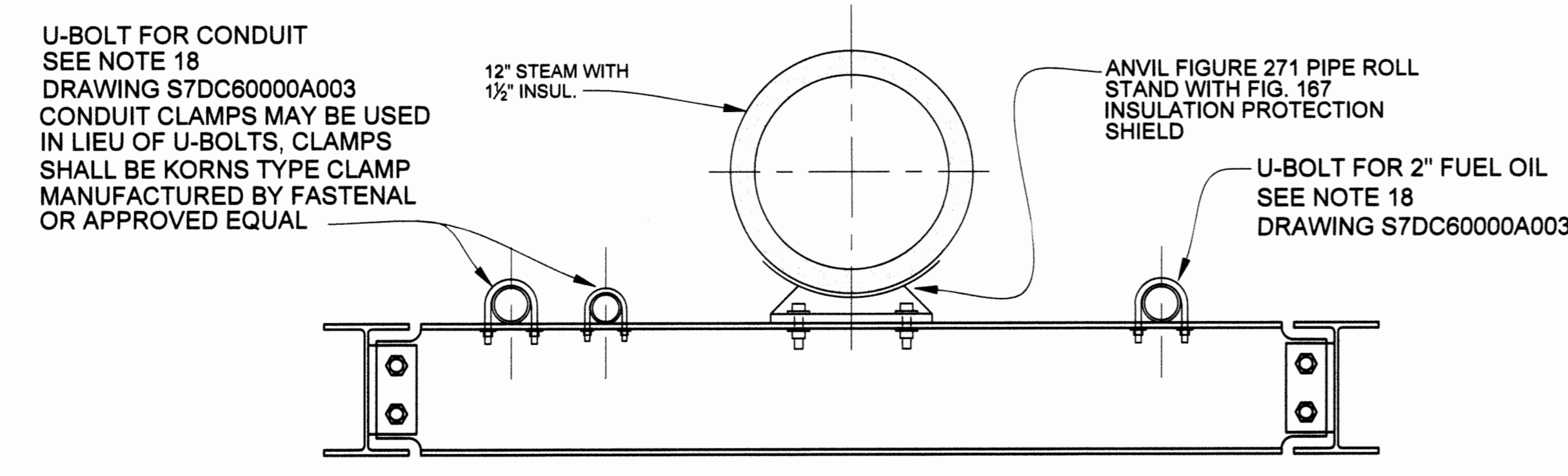
J BASE PLATE DETAIL
Scale: 3" = 1'



C COLUMN/BEAM CONNECTION
Scale: 3" = 1'



3 BEAM TAB SECTION
Scale: 3" = 1'



E TYPICAL UTILITY MOUNTING DETAIL (LOOKING SOUTH)
Scale: 1 1/2" = 1'

REFERENCE DRAWINGS
S7DC60000A001
S7DC60000A003
S7DC60000A005
S7DC60000A007
S7DC60000A008

REV.	3
DRW.	Radu Flouca 3-20-19
CHKR.	J. K. [Signature] 03/20/19
R.E.	[Signature] 03/20/19
T.R.	N/A
APPD.	[Signature] 3/23/19
DRAWING APPROVALS	DATE

PRIORITY 3

FOUR RIVERS NUCLEAR PARTNERSHIP, LLC
DOE PRIME CONTRACT # DE-EM0004895

FLUOR PADUCAH DEACTIVATION PROJECT
DOE Prime Contract #DE-DT0007774

U.S. DEPARTMENT OF ENERGY
PADUCAH, PORTSMOUTH PROJECT OPERATIONS,
PADUCAH GASEOUS DIFFUSION PLANT

LATA Environmental Services
of Kentucky, LLC
managed for the DEPARTMENT OF ENERGY under
U.S. GOVERNMENT contract DE-AC30-10CC40020
Paducah, Kentucky

DOE CONTRACT NO. DE-AC30-10CC40020

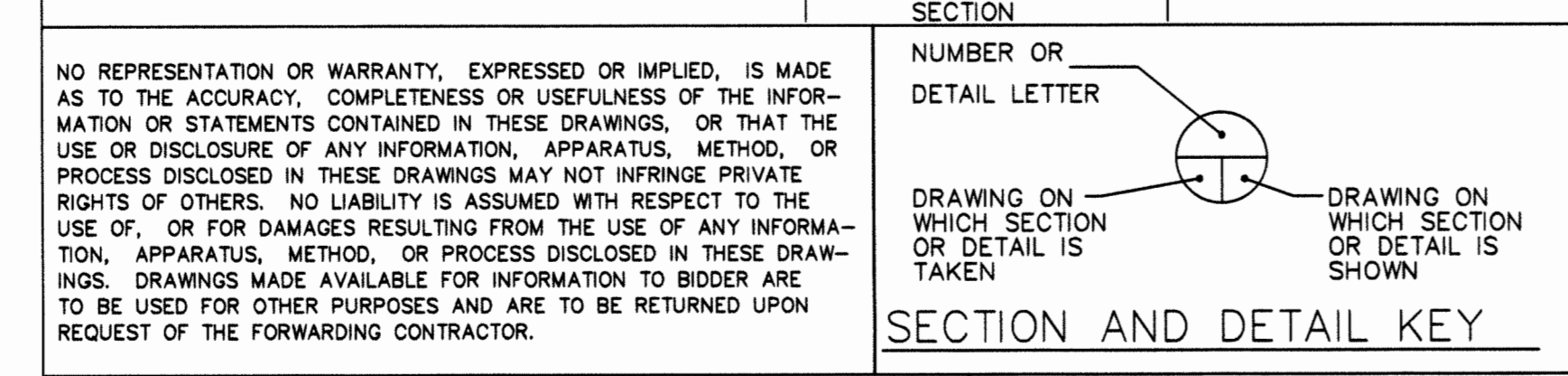
PROJECT NAME:
STEAM PACKAGE BOILERS AND PERMITS

TITLE:
C-600 AREA PACKAGE BOILERS
UTILITY BRIDGE
DETAIL SHEET 2

EDCS CAD FILENAME S7DC60000A006 rev3.dwg	BUILDING C-600	PLANT PGDP	CLASS U
---	-------------------	---------------	------------

SCALE: AS SHOWN
DRAWING NUMBER: S7DC60000A006
REV: 3

REFERENCE DRAWINGS	DRAWING NO. SECTION



2	KTW	KK	KK	--	KAS	3/9/18
REV	DRW	CHKR	RE	TR	APPD	DATE

REV.	DATE	DESCRIPTION	DRAWN BY	DRAFT CHK	PROJ ENGR	LEAD ENGR	CONF CTRL/NUCL SFTY	FAC MGR	E&E MGR
3		CERTIFIED FOR CONSTRUCTION FOR ESO FA5270							
2		AS BUILT ENTIRE DRAWING FOR ESO-FA1620, INCORPORATED FA1							
1	4/8/15	ISSUED FOR CONSTRUCTION	KTW	TAW	TDS	TAW	JBW	RGS	KLH
0	3/20/15	ISSUED FOR CONSTRUCTION	KTW	TAW	TDS	TAW	JBW	RGS	KLH

NO REPRESENTATION OR WARRANTY, EXPRESSED OR IMPLIED, IS MADE AS TO THE ACCURACY, COMPLETENESS OR USEFULNESS OF THE INFORMATION OR STATEMENTS CONTAINED IN THESE DRAWINGS, OR THAT THE USE OR DISCLOSURE OF ANY INFORMATION, APPARATUS, METHOD, OR PROCESS DISCLOSED IN THESE DRAWINGS MAY NOT INFRINGE PRIVATE RIGHTS OF OTHERS. NO LIABILITY IS ASSUMED WITH RESPECT TO THE USE OF, OR FOR DAMAGES RESULTING FROM THE USE OF ANY INFORMATION, APPARATUS, METHOD, OR PROCESS DISCLOSED IN THESE DRAWINGS. DRAWINGS MADE AVAILABLE FOR INFORMATION TO BIDDER ARE TO BE USED FOR OTHER PURPOSES AND ARE TO BE RETURNED UPON REQUEST OF THE FORWARDING CONTRACTOR.

6 5 4 3 2 1