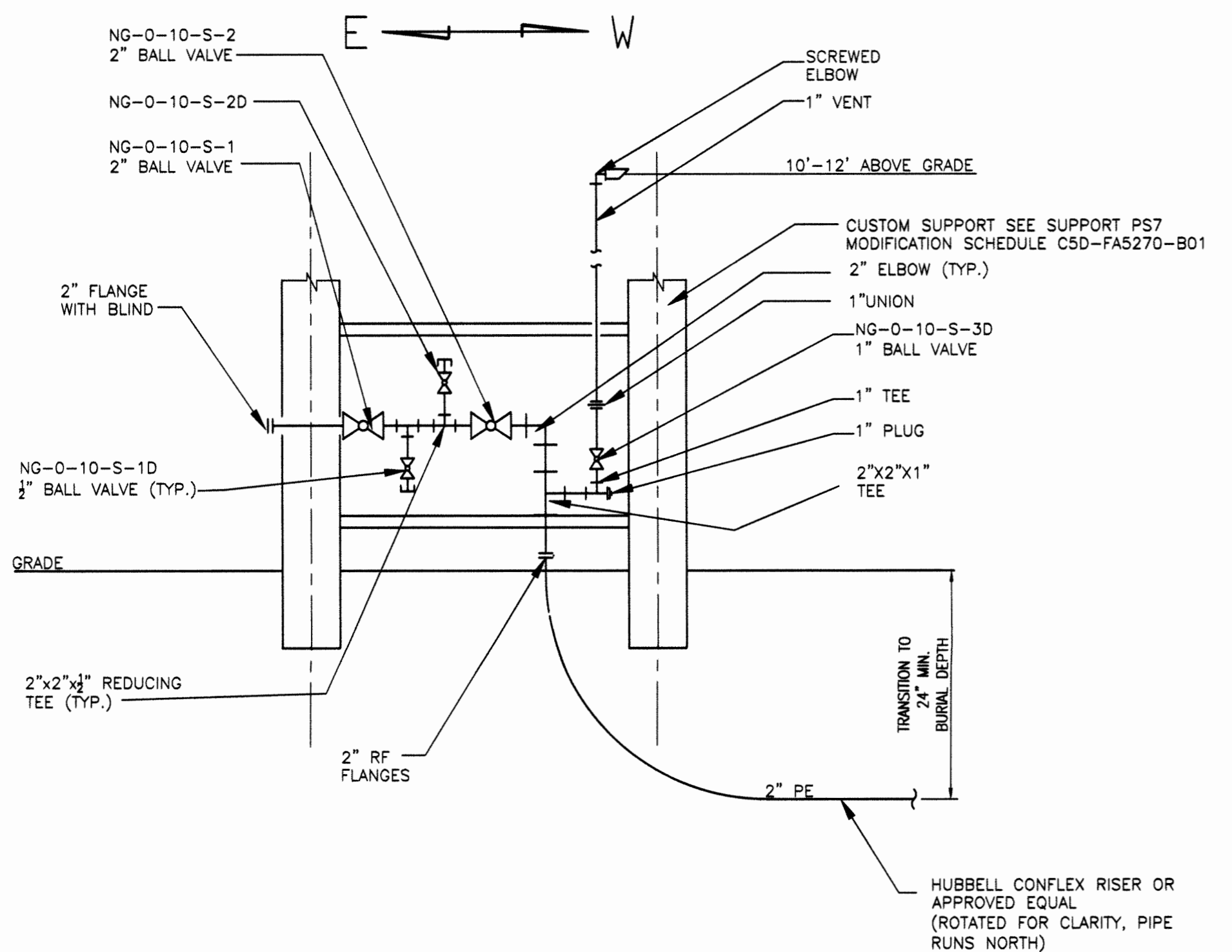
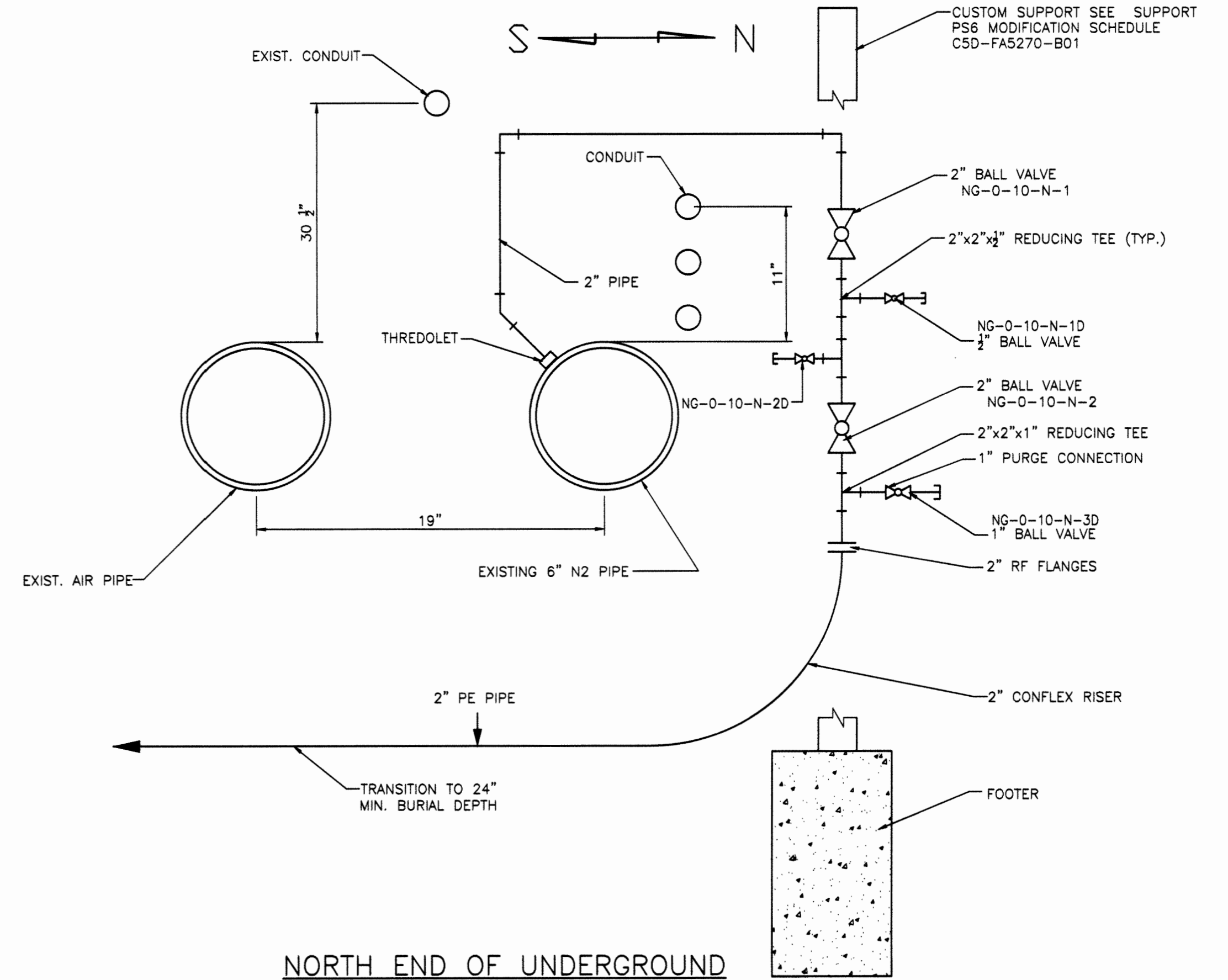


- GENERAL NOTES:**
- SEE GENERAL NOTES ON DWG. M5D-FA5270-B06
 - INSTALL PE PIPE RISER PER MANUFACTURER'S INSTRUCTIONS. ROTATE AS NEEDED TO AID IN HORIZONTAL BORING.
 - INSTALLER SHALL PROVIDE A 14 AWG INSULATED TRACER WIRE WHEN INSTALLING PE PIPE.
 - INSTALL WEED BARRIER AND GRAVEL OR STONE AT UNDERGROUND PE PIPE EXIT POINTS AS DIRECTED BY ENGINEERING.

PARTIAL UNDERGROUND UTILITY PLAN
SCALE: 1"=20'-0"



C-100 EQUIPMENT PAD
SCALE: NTS



NORTH END OF UNDERGROUND TO C-100 EQUIPMENT PAD
SCALE: NTS

<p>SECTION NUMBER OR DETAIL LETTER</p> <p>DRAWING ON WHICH SECTION OR DETAIL IS TAKEN</p>	<p>DRAWING ON WHICH SECTION OR DETAIL IS SHOWN</p>	<p>TOLERANCES UNLESS OTHERWISE SPECIFIED</p> <p>FRACTIONS XX DECIMALS XXX DECIMALS ANGLES BREAK SHARP EDGES MAX. FINISH</p>		<p>NO REPRESENTATION OR WARRANTY, EXPRESSED OR IMPLIED, IS MADE THAT THE USE OR DISCLOSURE OF ANY INFORMATION, APPARATUS, METHOD OR PROCESS DISCLOSED IN THESE DRAWINGS MAY NOT INFRINGE PRIVATE RIGHTS OF OTHERS. NO LIABILITY IS ASSUMED WITH RESPECT TO THE USE OF OR FOR DAMAGES RESULTING FROM THE USE, ANY INFORMATION, APPARATUS, METHOD OR PROCESS DISCLOSED IN THESE DRAWINGS.</p>							
		<p>SECTION AND DETAIL KEY</p>		<p>THIS DRAWING PRODUCED ON AUTOCAD DO NOT REVISE MANUALLY.</p>							
<p>0 CERTIFIED FOR CONSTRUCTION FOR ESO FA5270</p>				X	X	X	X	X	X	X	
<p>REV. NO. ISSUE / REVISION DESCRIPTION</p>				DATE	DRW	CHKR	RE	TR	APPD	<p>DRAWING APPROVALS</p>	
<p>3/22/19</p>										<p>DATE</p>	

3/22/19

PE Edgie Holland *EH* 3/22/19
 CHKR *Edgie Holland* 3/22/19
 RE *Edgie Holland* 3/22/19
 TR N/A
 APPD *Edgie Holland* 3/22/19

FOUR RIVERS NUCLEAR PARTNERSHIP, LLC
 DOE PRIME CONTRACT # DE-EM0004895
NATURAL GAS LINE USING EXISTING NITROGEN LINES C-100 UNDERGROUND PIPING PLANS & DETAILS
 NON-ESSENTIAL
 SCALE AS NOTED PLANT PGDP BLDG AREA FL X CLASS U
 ID FA5270 M5D-FA5270-B04 REV 0