

Unclassified

BLDG. C337

BLDG. C335

NO	SUPPORT MARK	TYPE	ELEVATION	Y	X	
1	A31	EXISTING SUPPORT	370.0	377.0	6.0	13.0
2	P1. P2. P3.	I	370.0	377.0	6.0	13.0
3	P4. P5. P6. P7.	II	370.0	377.0	6.0	13.0
4	P8. P9. P10.	III	370.0	377.0	6.0	13.0
5	P11. P12. P13. P14.	IV	370.0	377.0	6.0	13.0
1	A32	EXISTING SUPPORT	370.0	377.0	6.0	13.0
2	P15.	I	370.0	377.0	6.0	13.0
3	P16. P17. P18. P19.	II	370.0	377.0	6.0	13.0
4	P20. P21.	III	370.0	377.0	6.0	13.0
1	A33	EXISTING SUPPORT	370.0	377.0	6.0	13.0
2	P22. P23. P24. P25.	I	370.0	377.0	6.0	13.0
1	A34	EXISTING SUPPORT	370.0	377.0	6.0	13.0
2	P26 TO P28 INCL.	I	370.0	377.0	6.0	13.0
3	P29 TO P31 INCL.	II	370.0	377.0	6.0	13.0
4	P32. P33.	III	370.0	377.0	6.0	13.0
1	A35	EXISTING SUPPORT	370.0	377.0	6.0	13.0
2	P34. P35. P36.	I	370.0	377.0	6.0	13.0
3	P37. P38.	II	370.0	377.0	6.0	13.0
4	P39. P40.	III	370.0	377.0	6.0	13.0
1	A36	EXISTING SUPPORT	370.0	377.0	6.0	13.0
2	P41. P42. P43.	I	370.0	377.0	6.0	13.0
3	P44. P45.	II	370.0	377.0	6.0	13.0
4	P46. P47.	III	370.0	377.0	6.0	13.0
1	A37	EXISTING SUPPORT	370.0	377.0	6.0	13.0
2	P48 TO P50 INCL.	I	370.0	377.0	6.0	13.0
3	P51 TO P53 INCL.	II	370.0	377.0	6.0	13.0
4	P54. P55. P56.	III	370.0	377.0	6.0	13.0
1	A38	EXISTING SUPPORT	370.0	377.0	6.0	13.0
2	P57. P58.	I	370.0	377.0	6.0	13.0
3	P59. P60.	II	370.0	377.0	6.0	13.0
4	P61 TO P63 INCL.	III	370.0	377.0	6.0	13.0
1	A39	EXISTING SUPPORT	370.0	377.0	6.0	13.0
2	P64. P65.	I	370.0	377.0	6.0	13.0
3	P66. P67.	II	370.0	377.0	6.0	13.0
4	P68 TO P70 INCL.	III	370.0	377.0	6.0	13.0
1	A40	EXISTING SUPPORT	370.0	377.0	6.0	13.0
2	P71 TO P73 INCL.	I	370.0	377.0	6.0	13.0
3	P74 TO P76 INCL.	II	370.0	377.0	6.0	13.0
4	P77 TO P79 INCL.	III	370.0	377.0	6.0	13.0
1	A41	EXISTING SUPPORT	370.0	377.0	6.0	13.0
2	P80 TO P82 INCL.	I	370.0	377.0	6.0	13.0
3	P83 TO P85 INCL.	II	370.0	377.0	6.0	13.0
4	P86 TO P88 INCL.	III	370.0	377.0	6.0 </tr	

1ST REVIEWER	DATE	REVISION	REASON
2ND REVIEWER	DATE	REVISION	REASON

THIS SECTION - LINE 16 - SAME AS FOR LINE 15 - LINE COORDINATE EXCEPTED.

CLASSIFICATION CHANGED TO **Unclassified**

DATE: 11/13/11

- NOTE:**
1. PLACE ALL ANCHOR MARKS AT DEPTH GIVEN IN SECTION 5.5.
 2. CARRY ALL PIPE SUPPORT FOOTINGS DOWN TO 800' SOIL.
 3. CONCRETE TO THE YELLOW BANDS 90' DOWN AT 24' SPAC.
 4. LEVEL EXPOSED ENDS OF ALL CONDUITS - 1" I.D.W.
 5. SET IN-BAND MARKS - ALL SETTING SPEEDS 800' AND MARKS USED IN BANDS ON PIS. MARKS MAY BE OMITTED.
 6. PIPES FROM ALL SUPPORTS TO BE STATIONED STRAIGHT.
 7. WELDED CONNECTIONS TO BE USED THROUGHOUT.

SCALE - 1 IN = 50 FT.

REV. 5	DATE	BY	APP. APPROVALS
5	11/13/11	J. K. BROOKS	
4	11/13/11	H.W. SAVAGE	
3	11/13/11	J. K. BROOKS	
2	11/13/11	J. K. BROOKS	
1	11/13/11	J. K. BROOKS	

FOUR RIVERS NUCLEAR PARTNERSHIP, LLC

DOE PRIME CONTRACT # DE-EM000485

5	11/13/11	CERTIFIED FOR CONSTRUCTION FOR ESO-FA520	9/28/11-11
4	11/13/11	AS BUILT	9/28/11-11
3	11/13/11	REVISION REQUEST 2011	9/28/11-11
2	11/13/11	CONSTRUCTION	9/28/11-11
1	11/13/11	APPROVAL - IIC	9/28/11-11

UNITED STATES
ATOMIC ENERGY COMMISSION

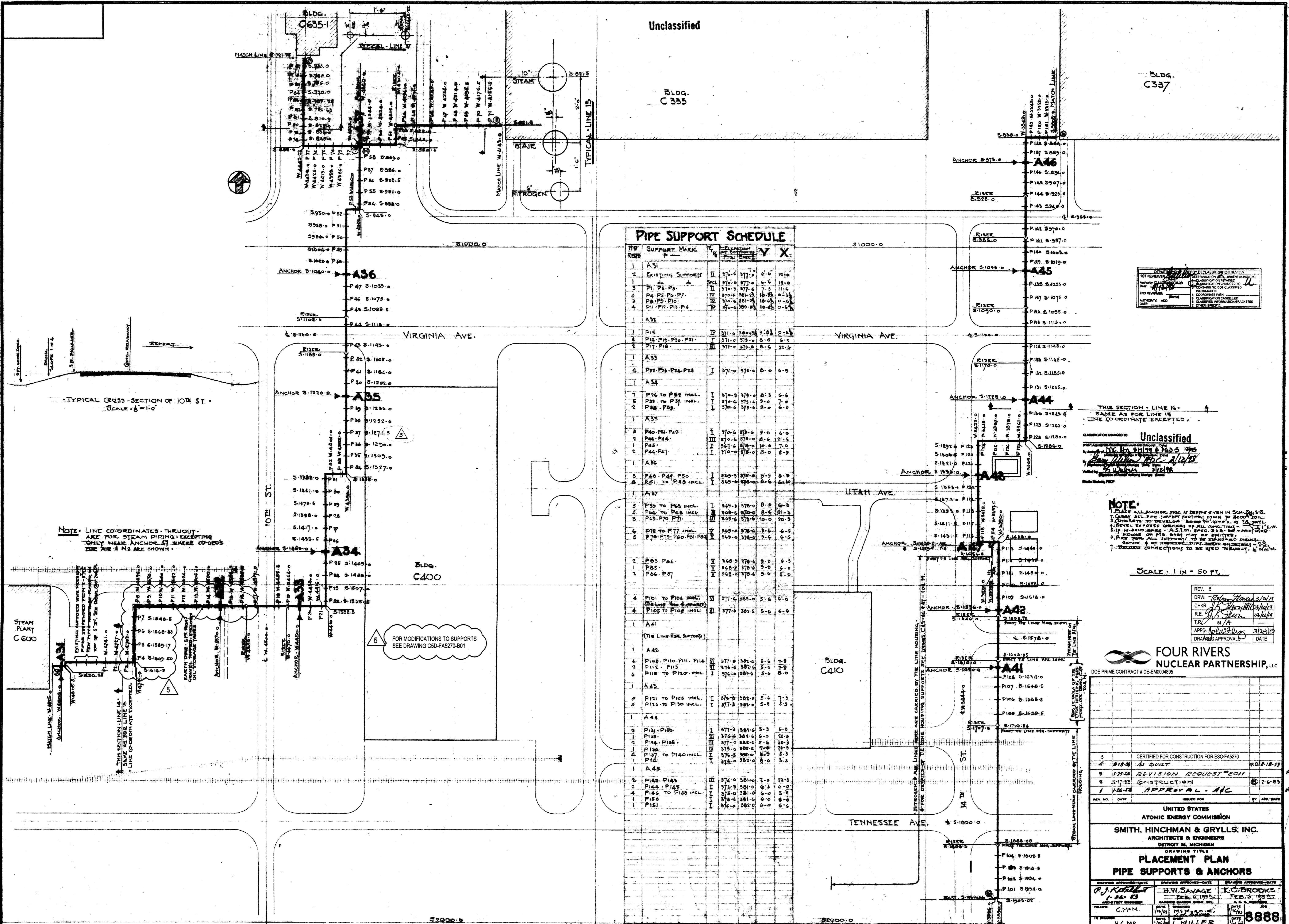
SMITH, HINCHMAN & GRYLLS, INC.
ARCHITECTS & ENGINEERS
DETROIT, MICHIGAN

**PLACEMENT PLAN
PIPE SUPPORTS & ANCHORS**

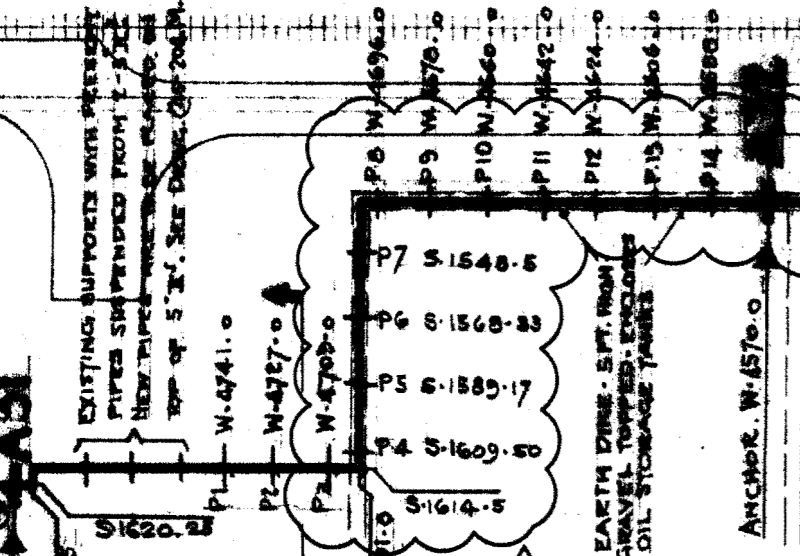
DESIGNED APPROVED DATE	DESIGNED APPROVED DATE	DESIGNED APPROVED DATE
P.J. KATHLEEN 11/13/11	H.W. SAVAGE 11/13/11	K.C. BROOKS 11/13/11
CHECKED	CHECKED	CHECKED
G.M.M.	M.S. MASON	J. K. BROOKS
IN CHARGE	IN CHARGE	IN CHARGE
H.C.M.	L.MILLER	8888
PROJECT	LOCATION	REV.
C PLANT EXTENSION	AREA STEAM DISTRIBUTION	C45-1-S 5

PRIORITY 3

UNCLASSIFIED



NOTE: LINE COORDINATES THROUGHOUT ARE FOR STEAM PIPING. EXCEPTING ONLY NEAR ANCHOR AT WHERE COORDS. ZONE ARE 1 & 2 ARE SHOWN.



FOR MODIFICATIONS TO SUPPORTS SEE DRAWING CSD-FA5270-B01