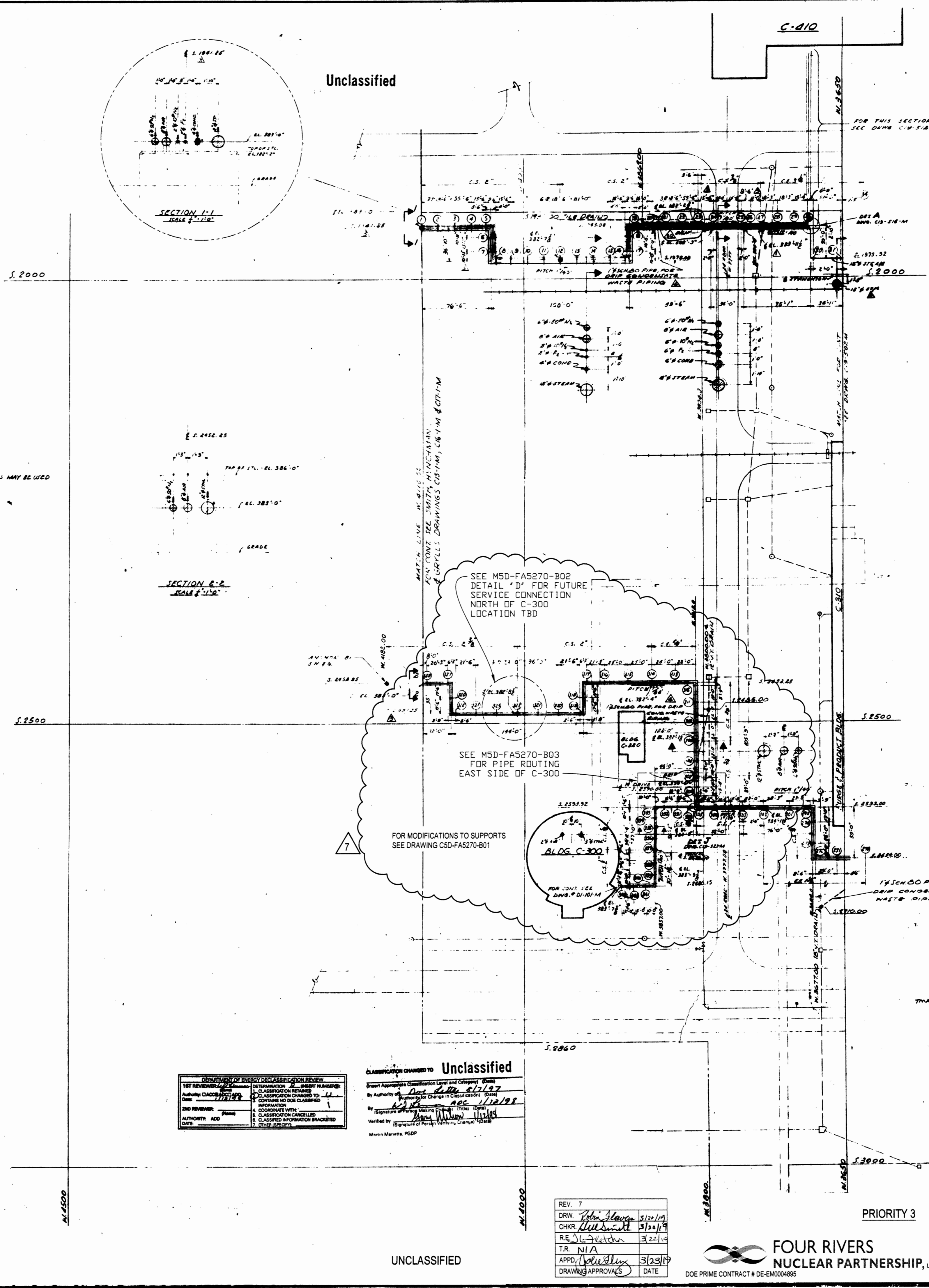
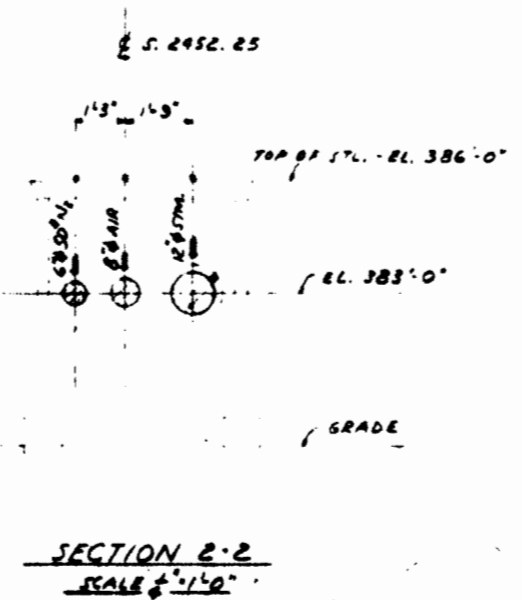
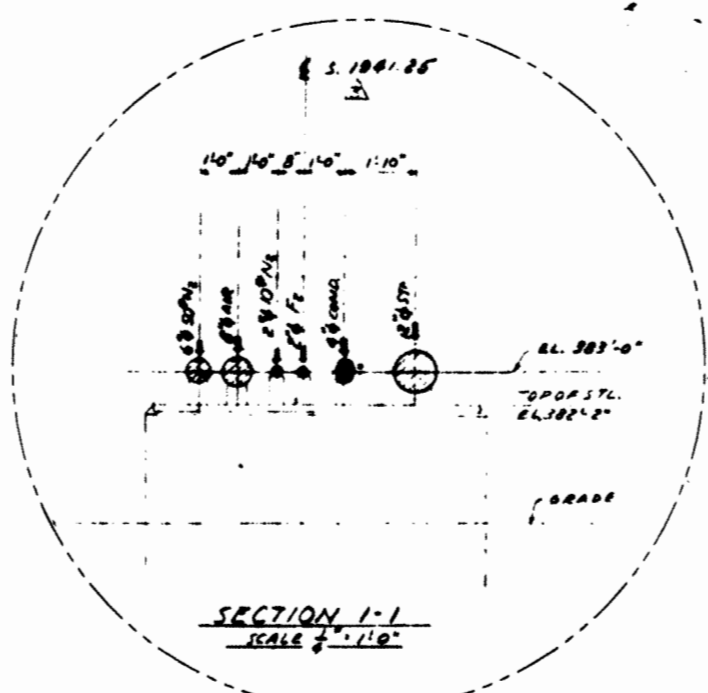


- LEGEND**
- ⊕ PIPE SUPPORTS AT TRUCK ALLEY, BLDG. C-331
 - ⊕ " " " " TIE LINE, BLDG. C-331 TO C-333
 - ⊕ " " " " " " C-315 TO C-331
 - ⊕ " " " " " " C-310 TO C-331
 - ⊕ " " " " " " C-910 TO C-310
 - ⊕ SUPPORT STANCHION
 - ⊕ ANCHOR
 - ⊕ STEAM LINE DRIP CONN. DATA
 - ⊕ COLD SPRING DIM.

- GENERAL NOTES**
1. PIPE LINE MATERIALS AND INSTALLATION ARE COVERED IN THE FOLLOWING SPECIFICATIONS:
 - (A) STEAM AND CONDENSATE - MASTER SPEC, SECT. 400
 - (B) NITROGEN " " " " " " 42C
 - (C) DRY AIR " " " " " " 42E
 - (D) ACID " " " " " " 42J EXCEPT THAT WELDED JOINTS & JOINTS TO WELDING FITTINGS MAY BE USED
 - (E) FLUORINE - SMITH, HINCHEMAN & GRILLS' SPEC. #C6 1006-M (AS APPLIED TO FLUORINE LINES ONLY)
 2. DRIP CONNECTIONS AS SHOWN ON DWG. #C19-520-M ARE TO BE PROVIDED ON STEAM LINES AT POINTS INDICATED ON DWGS.
 3. DRAIN CONNECTIONS AS SHOWN ON DWG. #C19-520-M ARE TO BE PROVIDED AT LOW POINTS OF CONDENSATE LINES.
 4. DRAIN PLUGS AS SHOWN ON DWG. #C19-520-M ARE TO BE PROVIDED AT LOW POINTS OF ALL HYDROSTATICALLY TESTED LINES OTHER THAN STEAM AND CONDENSATE.
 5. COLD SPRING IS TO BE APPLIED ON STEAM LINES ONLY, AS INDICATED ON DWGS.
 6. FOR PIPE SUPPORT STANCHIONS AND ANCHORS SEE DWG. #C19-540-M
 7. REPLACE SPRING HANGERS ON STEAM LINES WITH RODS OR OTHERWISE SUPPORT LINES FOR HYDROSTATIC TEST

- REFERENCE DRAWINGS**
- | | |
|-----------|-------------------------------|
| C19-500-M | KEY PLAN AND FLOW DIAGRAM |
| C19-501-M | 1" X 30" SCALE PLAN, SHEET #1 |
| C19-502-M | " " " " " #2 |
| C19-503-M | " " " " " #3 |
| C19-504-M | " " " " " #4 |
| C19-505-M | " " " " " #5 |
-
- | | |
|-----------|---|
| C19-510-M | PIPING AND DETAILS AT TRUCK ALLEY, BLDG. #C-331 |
| C19-511-M | " " " " TIE LINE, BLDG. #C-315 TO #C-331 |
| C19-512-M | PIPING PLAN AT TIE LINE, BLDG. #C-910 TO #C-310, SHEET #1 |
| C19-513-M | " " " " " " " " #2 |
| C19-514-M | PIPING AND DETAILS AT TIE LINE, BLDG. #C-310 TO #C-331 |
| C19-515-M | " " " " TRUCK ALLEY, BLDG. #C-333 |
| C19-516-M | SECTIONS AND DETAILS AT TIE LINE, BLDG. #C-910 TO #C-310 |
-
- | | |
|-----------|--------------------------|
| C19-520-M | PIPING DETAILS, SHEET #1 |
| C19-521-M | " " " " " #2 |
-
- | | |
|-----------|-----------------|
| C19-530-M | PIPING SUPPORTS |
|-----------|-----------------|
-
- | | |
|-----------|---------------------------------|
| C19-540-M | STRUCTURAL STANCHIONS & ANCHORS |
|-----------|---------------------------------|



7	CERTIFIED FOR CONSTRUCTION FOR ESO FAS270
6	11/30/97 CISEC Revision (C.DM-P664-R1)
5	11/9/97 As BUILT
4	11/9/97
3	5-4-92
2	11/17/91
1	11/17/91
CONSTRUCTION	
APPROVAL	

UNITED STATES
ATOMIC ENERGY COMMISSION

GIFFELS & VALLET, INC.
ENGINEERS
DETROIT, MICHIGAN
DETROIT OFFICE

OUTSIDE SERVICES ABOVE GEOLINE
STEAM, COND., DRY AIR, NITROGEN & FLUORINE
SCALE PLAN, SHEET #1

FOUR RIVERS
NUCLEAR PARTNERSHIP, LLC

C19-501-M

REV. 7	DATE
DRW. [Signature]	5/22/19
CHKR. [Signature]	5/20/19
RE. [Signature]	5/22/19
T.R. N/A	
APPD. [Signature]	5/23/19
DRAWING APPROVALS	DATE

DOE PRIME CONTRACT # DE-EM000495

PRIORITY 3

UNCLASSIFIED