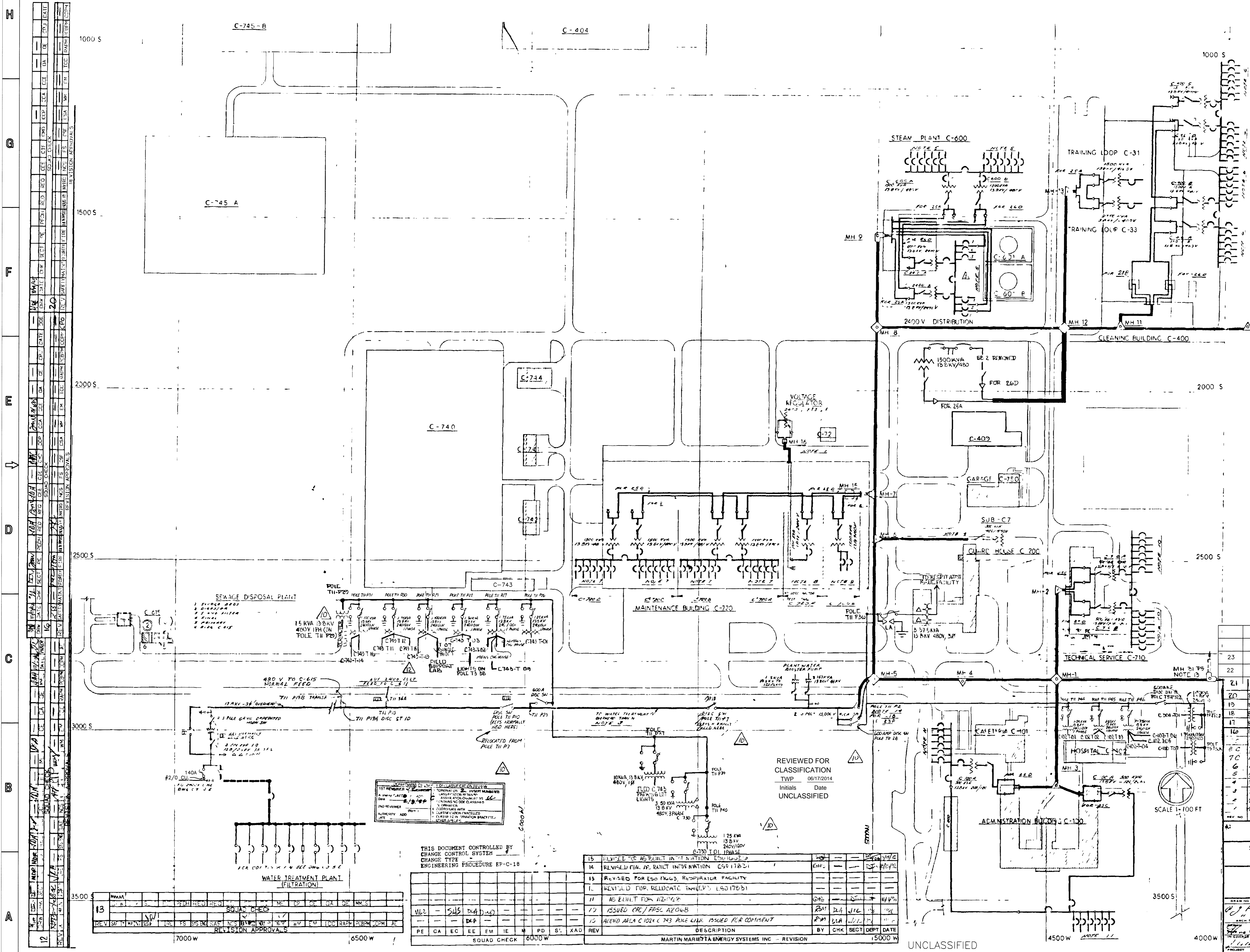


UNCLASSIFIED

NOTES
1 SEE DWG. 13-B-KV-DIST-C-409 FOR C-409
2 SEE DWG. 13-B-KV-DIST-C-409 FOR C-409
3 SEE DWG. 13-B-KV-DIST-C-409 FOR C-409
4 SEE DWG. 13-B-KV-DIST-C-409 FOR C-409
5 SEE DWG. 13-B-KV-DIST-C-409 FOR C-409
6 SEE DWG. 13-B-KV-DIST-C-409 FOR C-409
7 SEE DWG. 13-B-KV-DIST-C-409 FOR C-409
8 SEE DWG. 13-B-KV-DIST-C-409 FOR C-409
9 SEE DWG. 13-B-KV-DIST-C-409 FOR C-409
10 SEE DWG. 13-B-KV-DIST-C-409 FOR C-409
11 SEE DWG. 13-B-KV-DIST-C-409 FOR C-409
12 SEE DWG. 13-B-KV-DIST-C-409 FOR C-409
13 SEE DWG. 13-B-KV-DIST-C-409 FOR C-409
14 SEE DWG. 13-B-KV-DIST-C-409 FOR C-409
15 SEE DWG. 13-B-KV-DIST-C-409 FOR C-409
16 SEE DWG. 13-B-KV-DIST-C-409 FOR C-409



NO.	DATE	BY	CHKD.	DESC.
12	11/14/12	J.D.	J.D.	ISSUED FOR CONSTRUCTION
13	08/17/2014	J.D.	J.D.	UNCLASSIFIED

REVISION APPROVALS

THIS DRAWING PRODUCED ON AUTOCAD DO NOT REVISE MANUALLY

REV	NO.	DATE	BY	CHKD.	APPD.	DATE
23	X	08/17/2014	J.D.	J.D.		
22	GHS	X	BAD	X	MWD	7/10/03
21	X	07/14/03	J.D.	J.D.		

REV	NO.	DATE	BY	CHKD.	APPD.	DATE
23	X					
22	X					
21						
20	8/4/03					
19	8/1/03					
18	8/1/03					
17	8/1/03					
16	8/1/03					
15	11/3/01					
14	11/3/01					
13	11/3/01					
12	11/3/01					
11	11/3/01					
10	11/3/01					
9	11/3/01					
8	11/3/01					
7	11/3/01					
6	11/3/01					
5	11/3/01					
4	11/3/01					
3	11/3/01					
2	11/3/01					
1	11/3/01					

UNITED STATES
ATOMIC ENERGY COMMISSION
SMITH, HINCHMAN & GRYLLS, INC.
ARCHITECTS & ENGINEERS
DETROIT 26 MICHIGAN
DRAWING TITLE: **13.8KV SCHEMATIC PRIORITY 3**
DRAWING APPROVED DATE: **08/17/2014**
DRAWING APPROVED BY: **J.D.**
ARCHITECT: **J.D.**
ELECTRICAL ENGINEER: **J.D.**
DATE CHECKED: **08/17/2014**
DATE: **08/17/2014**
NO. **8768**
PROJECT: **C-6 PLANT 13.8 KV DISTRIBUTION**

THIS DOCUMENT CONTROLLED BY CHANGE CONTROL SYSTEM CHANGE TYPE ENGINEERING PROCEDURE EP-C-18

NO.	DESCRIPTION	BY	CHKD.	DATE
15	REVISED FOR AS BUILT INFO IN TREATMENT BUILDING	J.D.	J.D.	08/17/2014
14	REVISED FOR AS BUILT INFO IN TREATMENT BUILDING	J.D.	J.D.	08/17/2014
13	REVISED FOR AS BUILT INFO IN TREATMENT BUILDING	J.D.	J.D.	08/17/2014
12	REVISED FOR AS BUILT INFO IN TREATMENT BUILDING	J.D.	J.D.	08/17/2014
11	AS BUILT FOR AS-BUILT	J.D.	J.D.	08/17/2014
10	ISSUED FOR AS-BUILT	J.D.	J.D.	08/17/2014
9	REVISED FOR AS-BUILT INFO IN TREATMENT BUILDING	J.D.	J.D.	08/17/2014
8	REVISED FOR AS-BUILT INFO IN TREATMENT BUILDING	J.D.	J.D.	08/17/2014
7	REVISED FOR AS-BUILT INFO IN TREATMENT BUILDING	J.D.	J.D.	08/17/2014
6	REVISED FOR AS-BUILT INFO IN TREATMENT BUILDING	J.D.	J.D.	08/17/2014
5	REVISED FOR AS-BUILT INFO IN TREATMENT BUILDING	J.D.	J.D.	08/17/2014
4	REVISED FOR AS-BUILT INFO IN TREATMENT BUILDING	J.D.	J.D.	08/17/2014
3	REVISED FOR AS-BUILT INFO IN TREATMENT BUILDING	J.D.	J.D.	08/17/2014
2	REVISED FOR AS-BUILT INFO IN TREATMENT BUILDING	J.D.	J.D.	08/17/2014
1	REVISED FOR AS-BUILT INFO IN TREATMENT BUILDING	J.D.	J.D.	08/17/2014

UNCLASSIFIED

Image # 113561