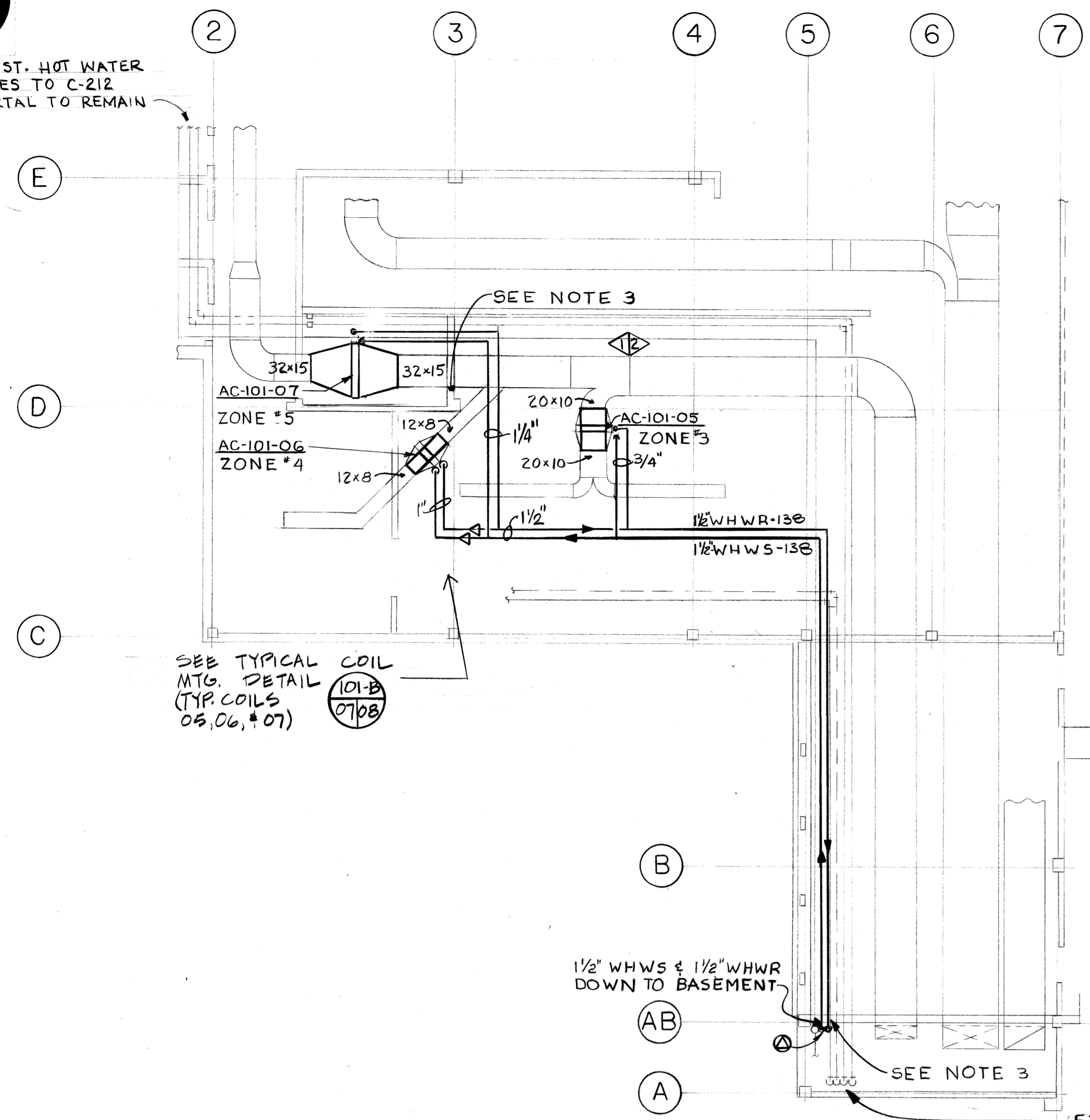
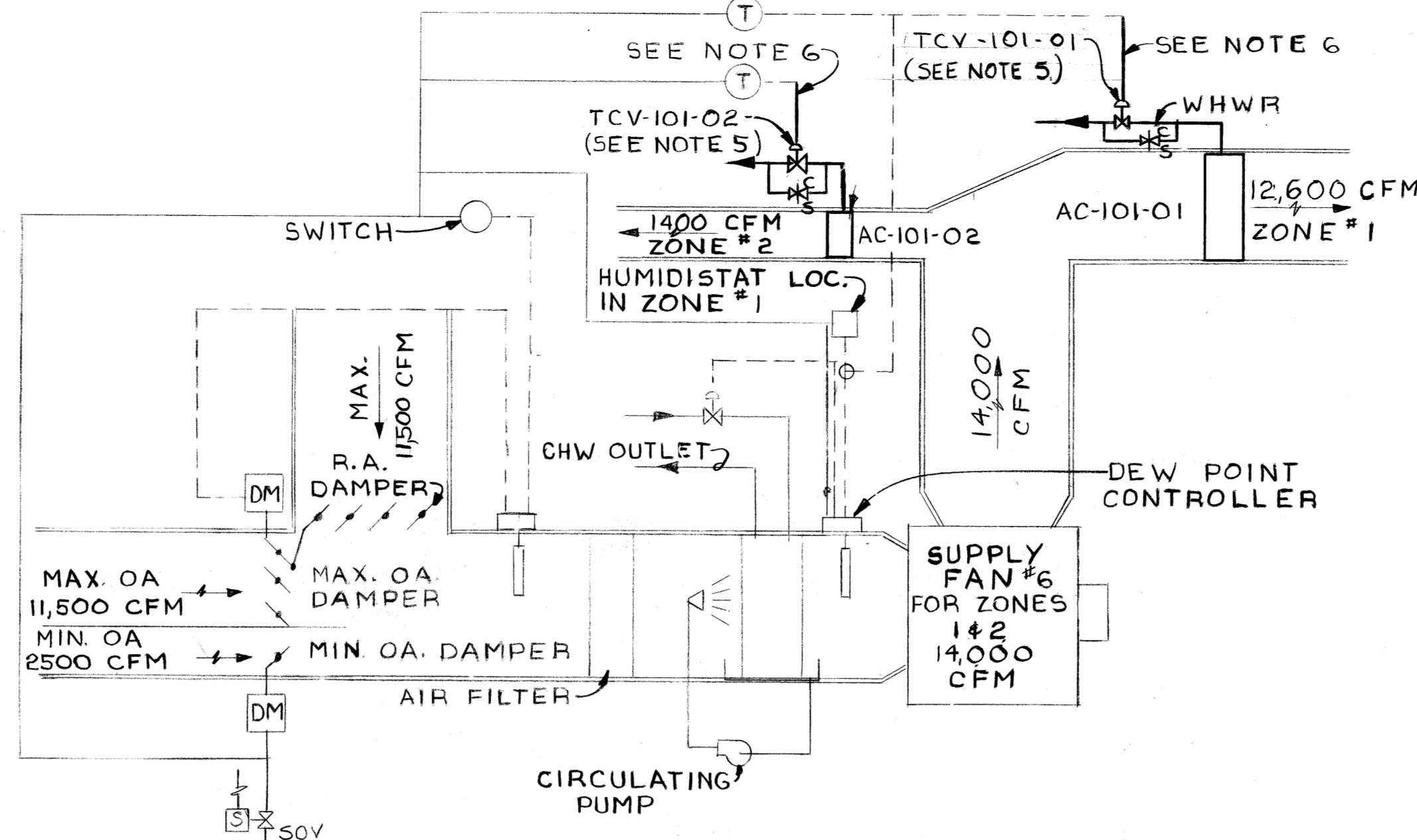


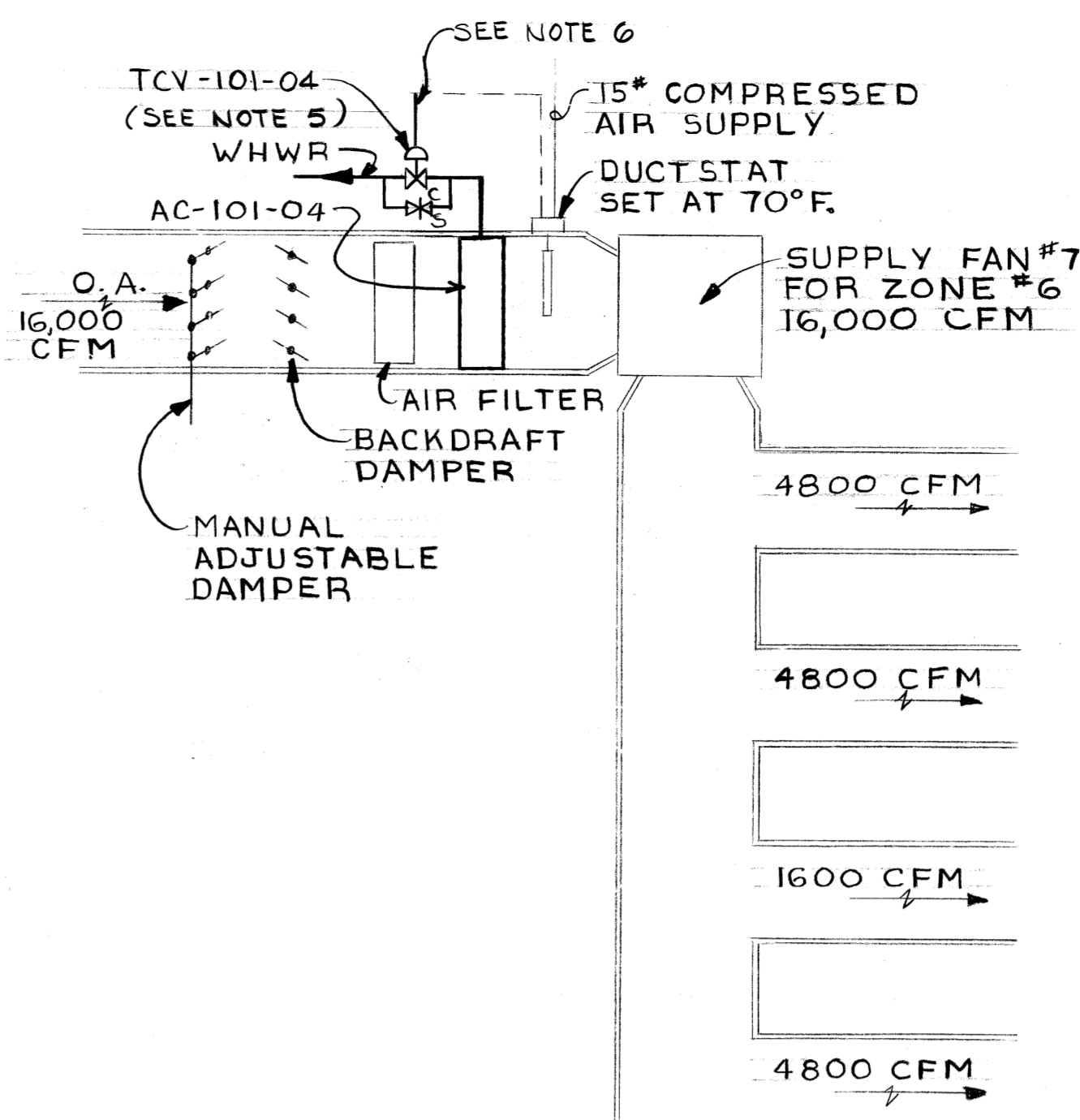
Unclassified



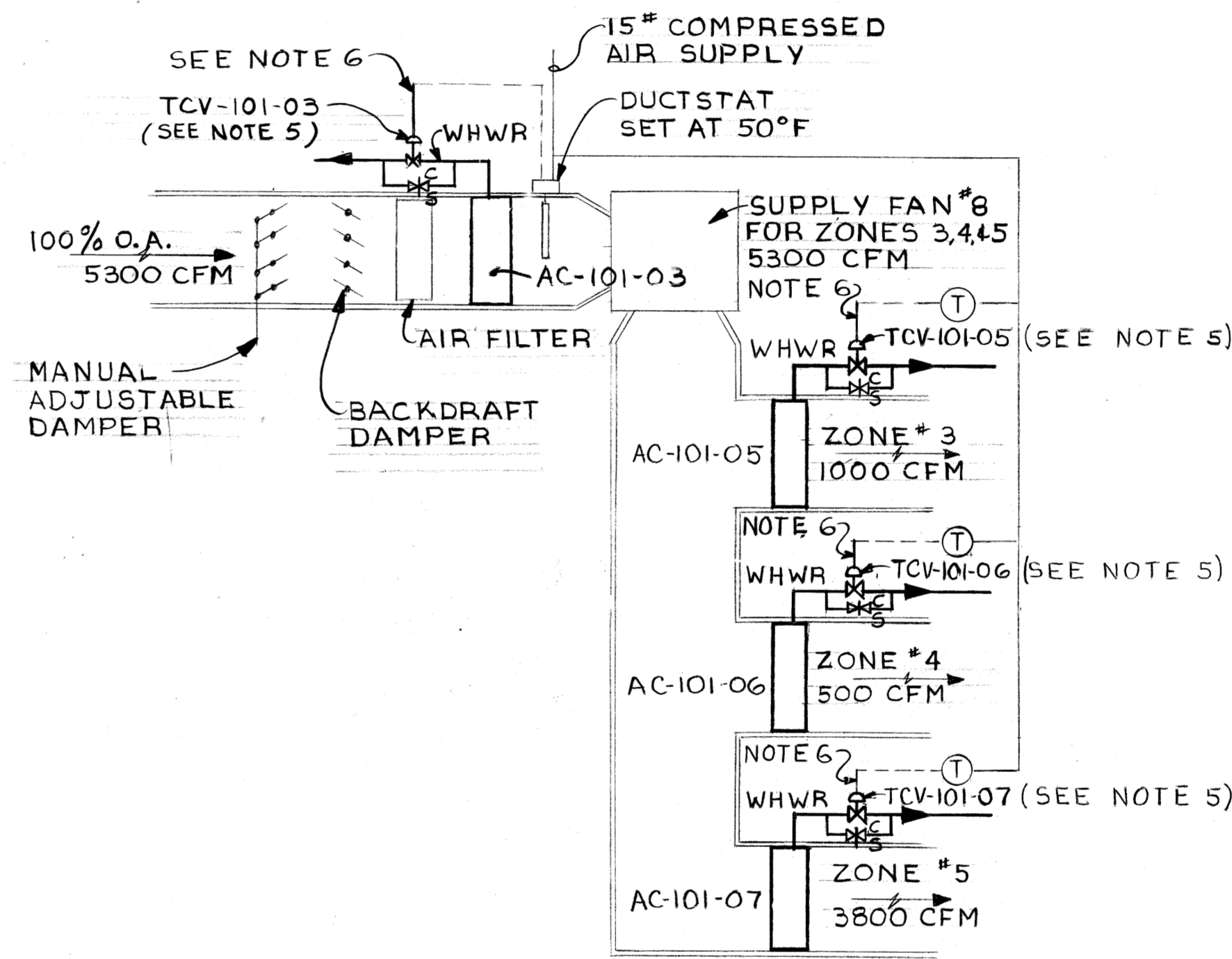
FIRST FLOOR PART PLAN  
SCALE 1/8"=1'-0"  
(REFERENCE DWG. B2-5-M JOB NO. 8768)



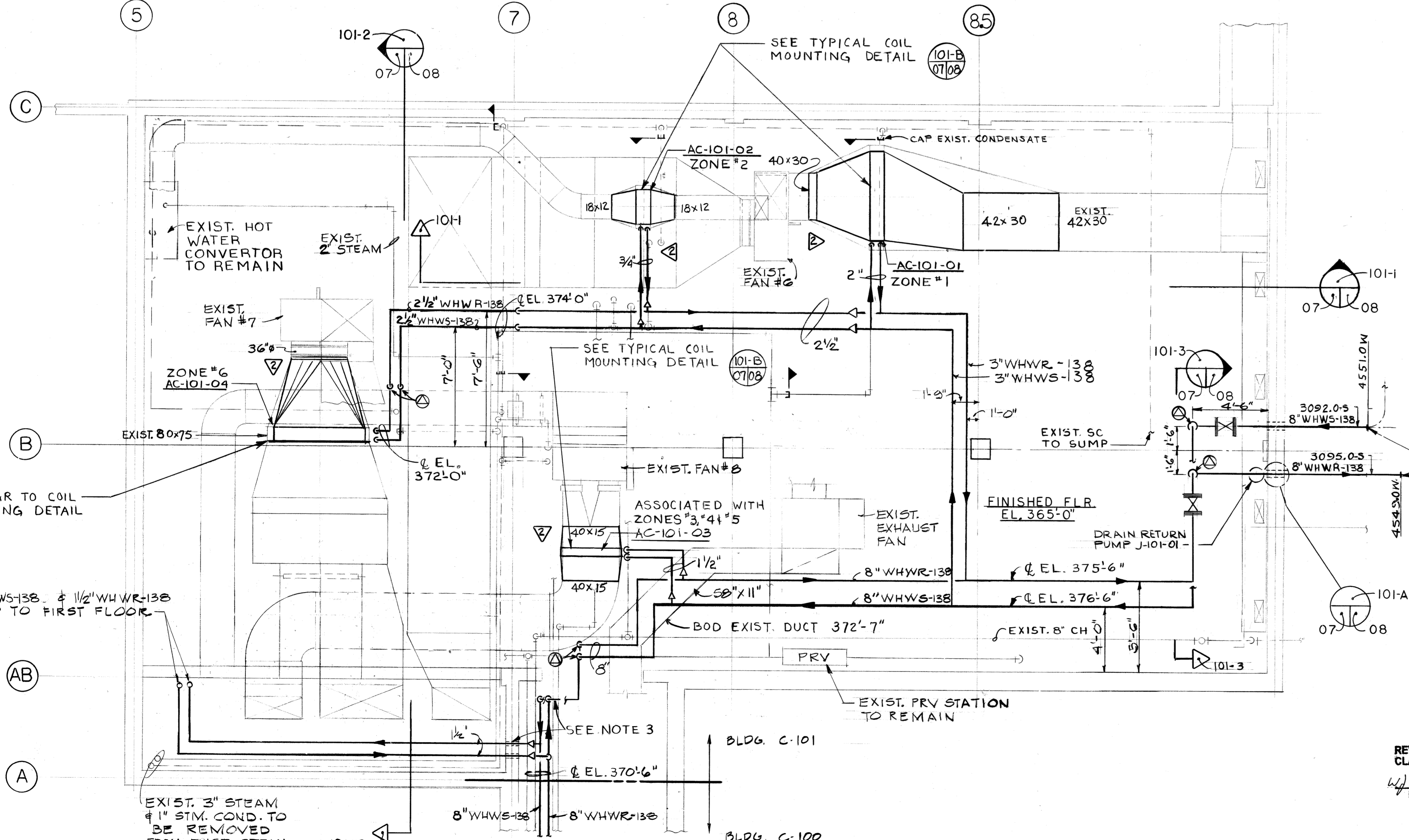
EXISTING AIR CONDITIONING UNIT  
CONTROL DIAGRAM FOR ZONES 1 & 2  
NO SCALE  
(SEE NOTE 5)



EXISTING CONTROL DIAGRAM  
FOR ZONE #6  
(MAKE-UP AIR)  
NO SCALE  
(SEE NOTE 5)



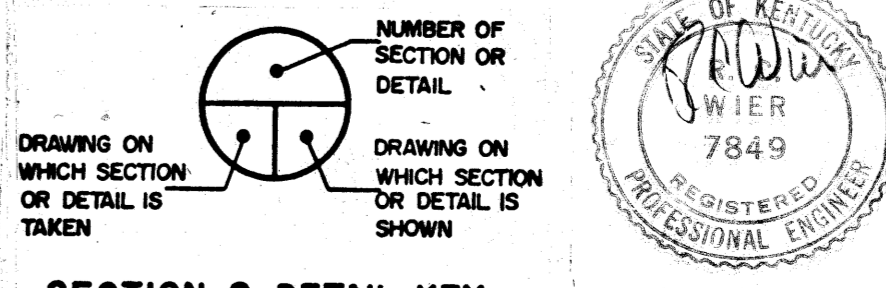
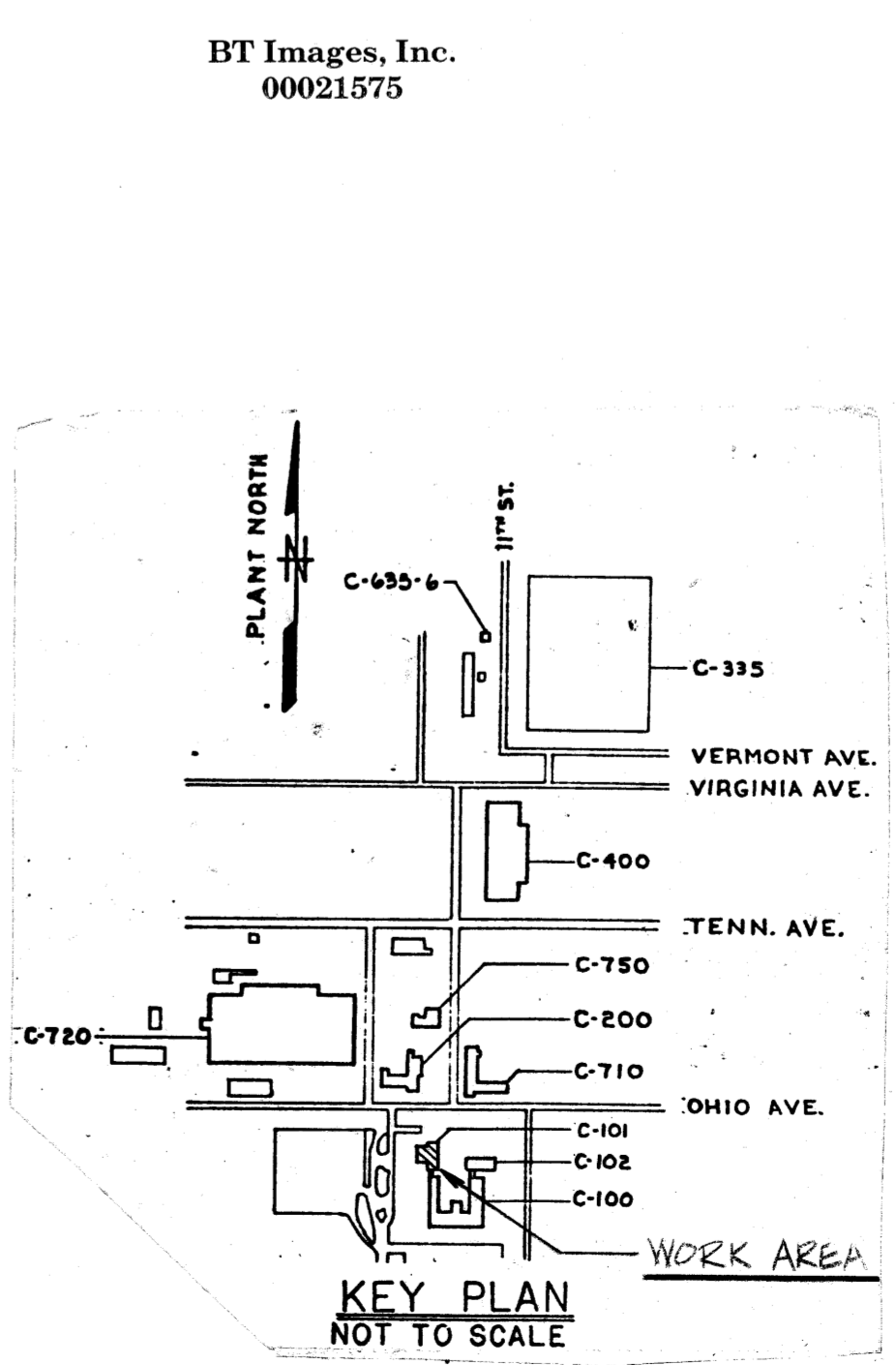
EXISTING CONTROL DIAGRAM  
FOR ZONES 3, 4 & 5  
NO SCALE  
(SEE NOTE 5)



BASEMENT PART PLAN  
SCALE 1/4"=1'-0"  
(REFERENCE DWG. B2-7-M JOB NO. 8768)

REVIEWED FOR CLASSIFICATION  
UNCLASSIFIED  
Date 1/26/98

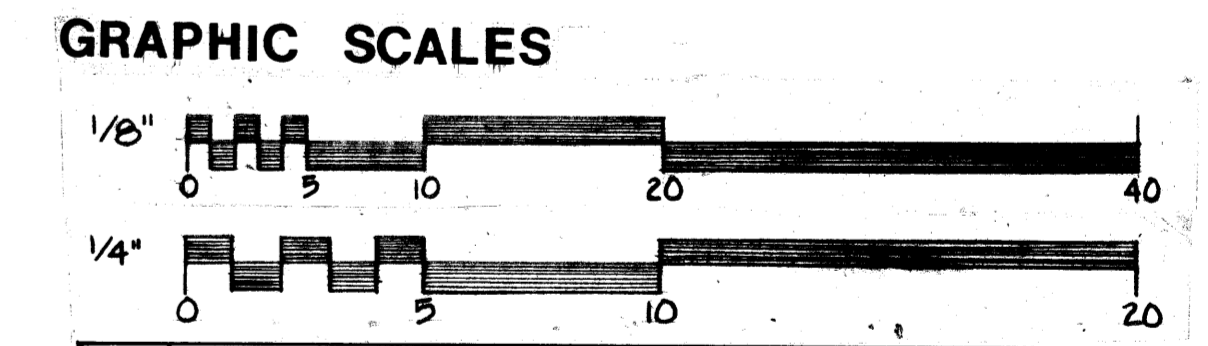
REVIEWED FOR CLASSIFICATION  
UNCLASSIFIED  
Date 06/13/2014



NOTES

- FOR GENERAL NOTES & LEGEND SEE DWG. 01
- REFER TO DWG. 08 FOR HOT WATER HEATING COIL & CONTROL VALVE SCHEDULES.- BLDG. C-101
- REFER TO ARCHITECTURAL DWG'S FOR WALL PENETRATION DETAILS
- REFER TO THIS DWG. FOR TYPICAL CONTROL DIAGRAMS - BLDG. C-101
- CONTROL DIAGRAM REFERENCE DWG. B2-10-M JOB NO. 8768. DIAGRAMS ARE FOR REFERENCE ONLY, ACTUAL CONTROL TO BE VERIFIED IN FIELD.

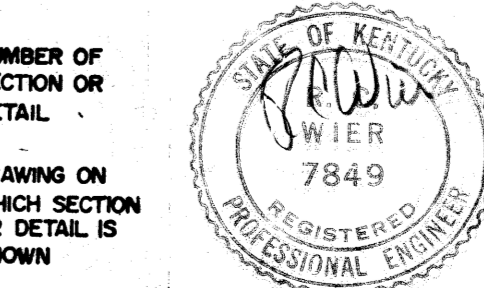
FOR INFORMATION ONLY



1c AS BUILT			
0 CERTIFIED FOR CONSTRUCTION			
REV. NO.	ISSUE PURPOSE (PFC-6279)	DATE	APPROVAL
UNITED STATES DEPARTMENT OF ENERGY			
A. M. KINNEY, INC. CONSULTING ENGINEERS CINCINNATI, OHIO			
HVAC			
BUILDING C-101			
BASEMENT & FIRST FLOOR - PART PLANS			
SUBMITTED - DATE	APPROVAL RECOMMENDED - DATE	DRAWING APPROVED - DATE	SCALE
2/16/79	3-27-79	3/27/79	AS NOTED
DRAWN BY	CHECKED BY	DATE	SCALE
Wier	Wier	2/16/79	AS NOTED
PROJECT	DRAWING NUMBER	REV. NO.	
PROCESS WASTE HEAT UTILIZATION	H5E-14951-0007	1c	

BT Images, Inc.  
00021575

FOR CONTINUATION  
SEE DWG. M5E-14179-0005



MICROFILMED