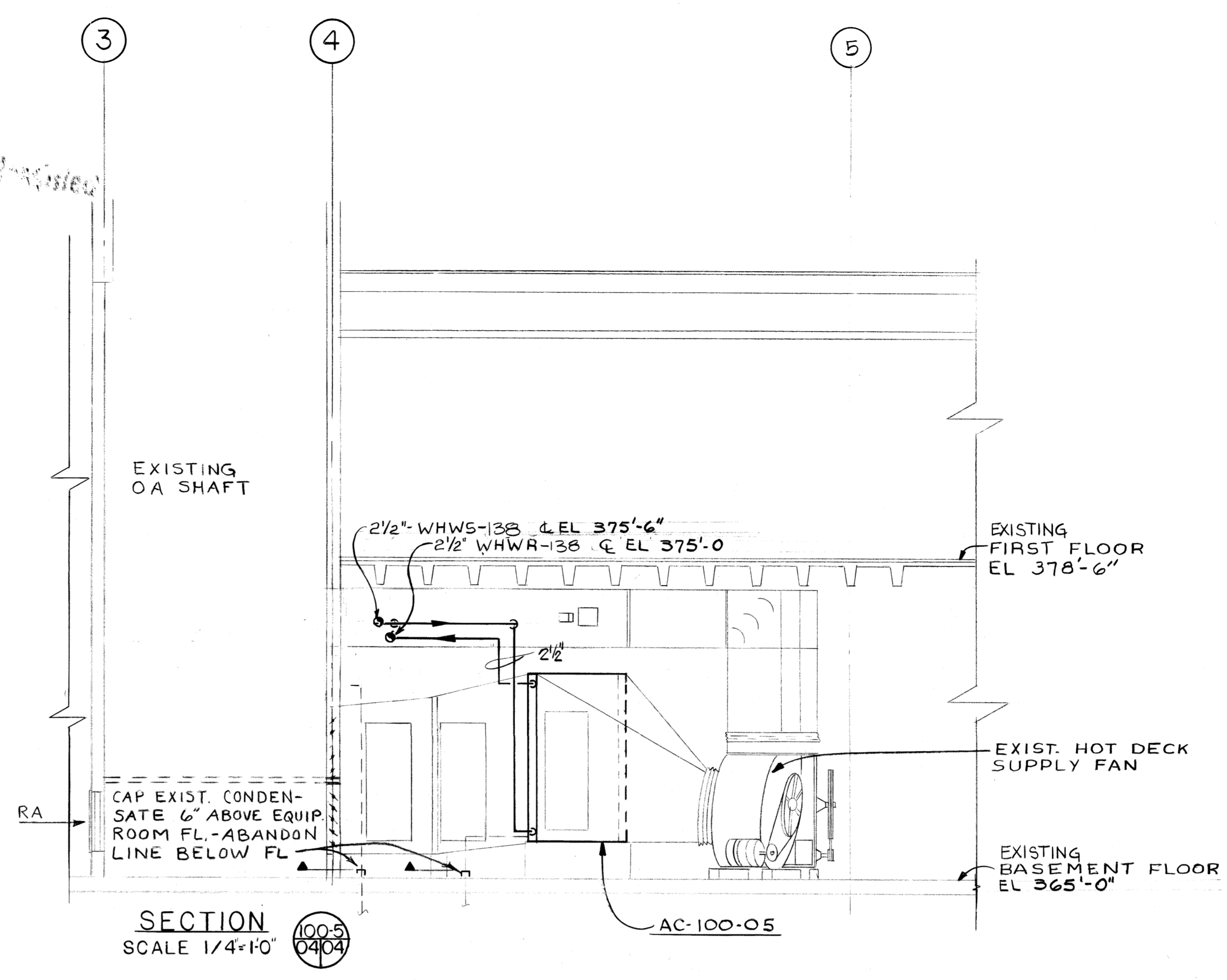


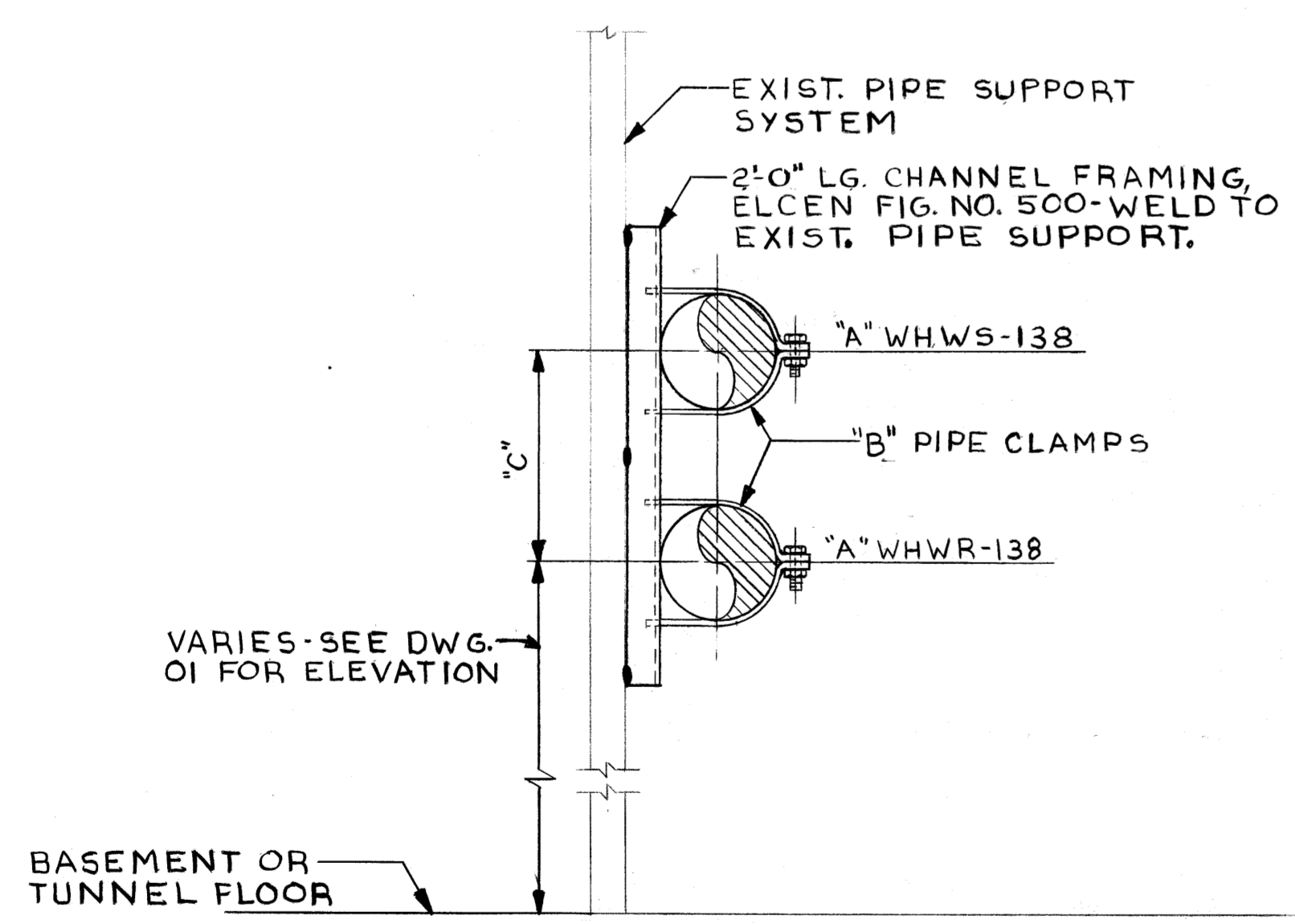
SOUTHWEST EQUIPMENT ROOM PART PLAN
SCALE: 1/4" = 1'-0"

Unclassified



SECTION
SCALE 1/4" = 1'-0"

- NOTES**
- FOR GENERAL NOTES & LEGEND SEE DWG. 01
 - REFER TO DWG. 06 FOR HOT WATER HEATING COIL & CONTROL VALVE SCHEDULES-BLDG C-100
 - REFER TO ARCHITECTURAL DWGS FOR WALL PENETRATION DETAILS
 - REFER TO DWG. 03 FOR TYPICAL CONTROL DIAGRAM BLDG C-100
 - REFERENCE DWG. BI-4-M JOB No. 8768



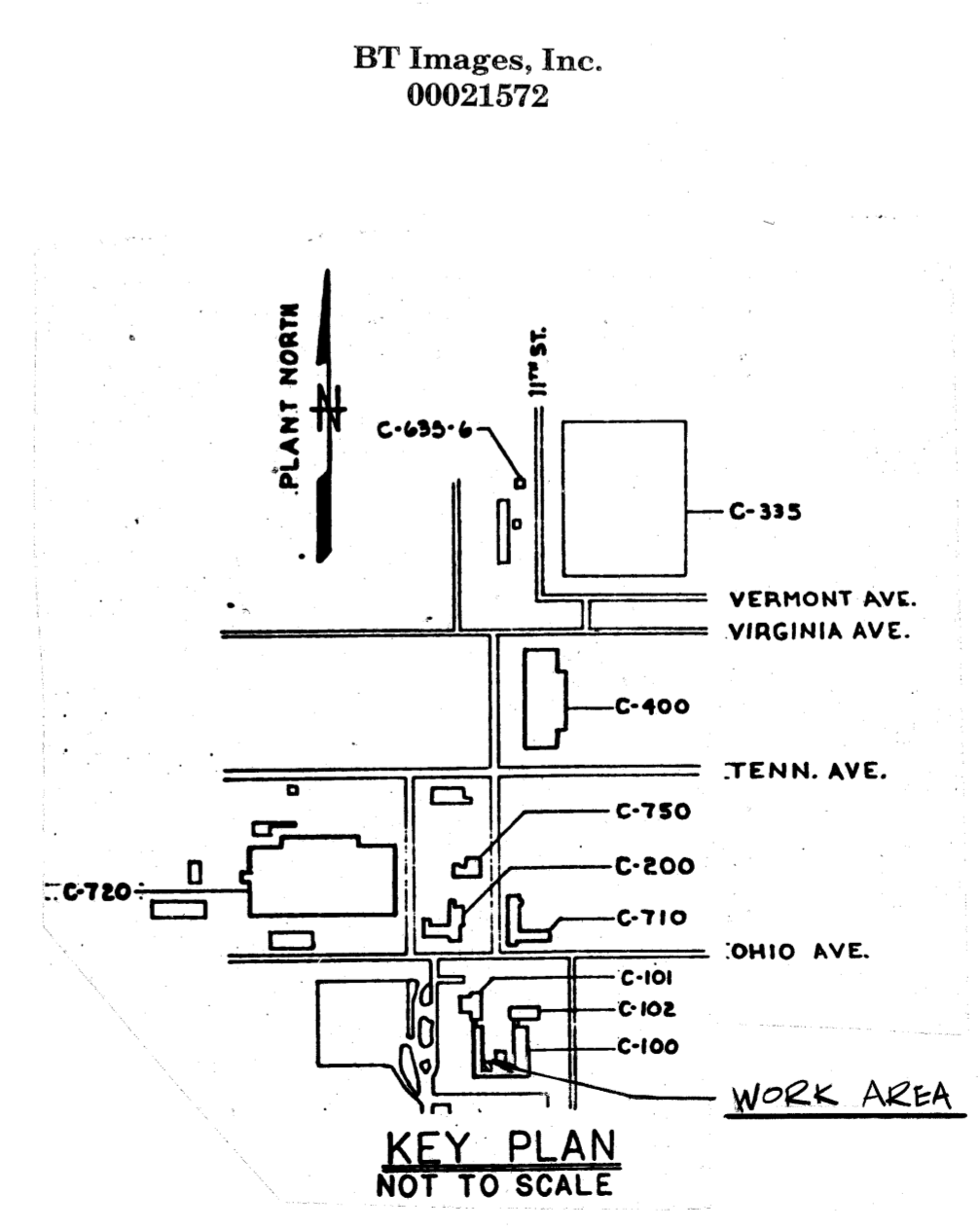
DETAIL
SCALE: 1 1/2" = 1'-0"

PIPE SIZE "A"	CLAMP SIZE "B"	DIMENSION "C"	ELCEN FIG. NO. GUIDE	ELCEN FIG. NO. ANCHOR
8"	8"	13"	650	650
6"	6"	11"	655	650
4"	4"	9"	655	650
2 1/2"	2 1/2"	7"	655	650

* WELD PIPE TO PIPE CLAMP

REVIEWED FOR CLASSIFICATION
WDC 06/13/2014
Initials Date
UNCLASSIFIED

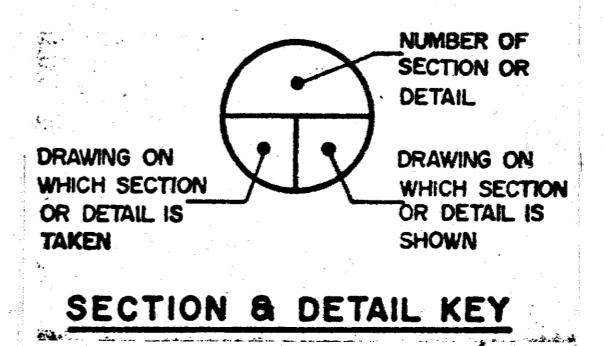
REVIEWED FOR CLASSIFICATION
Initials Date
UNCLASSIFIED



KEY PLAN
NOT TO SCALE

PIPELINE IDENTIFICATION

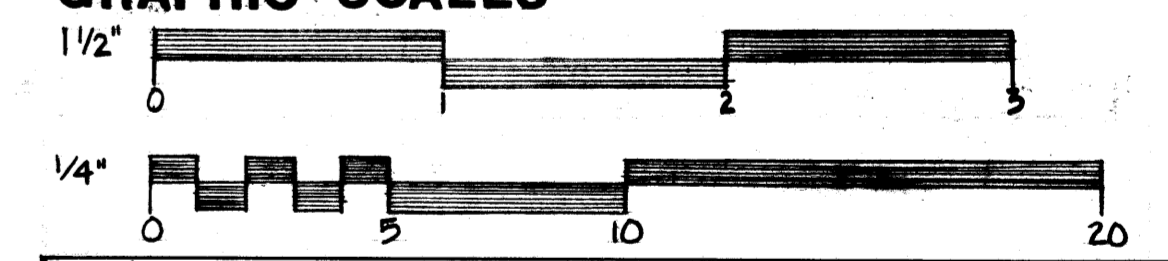
SIZE	SERVICE	SPEC. NO. (MATERIAL)
8"	WHWS-138	



SECTION & DETAIL KEY

FOR INFORMATION ONLY

GRAPHIC SCALES



REV. NO.	ISSUE PURPOSE (PPSC-6279)	DATE	BY	APP. BY
1c	AS BUILT	10/3/01	WDC	WDC
0	CERTIFIED FOR CONSTRUCTION	5/27/79	WDC	WDC

UNITED STATES DEPARTMENT OF ENERGY

A. M. KINNEY, INC.
CONSULTING ENGINEERS
CINCINNATI, OHIO

HVAC
BUILDING C-100
SOUTHWEST EQUIPMENT ROOM PART PLAN

DOE CONTRACT NO. DD79C-05-866
A/E PROJECT NO. 0249

DATE	SCALE
2/16/79	1/4" = 1'-0"

DATE	CHECKED	DATE	OPERATOR	DATE	DOE-ENGINEER
2/16/79	WDC	5/17/78	WDC	2/16/79	WDC

PROJECT	DRAWING NUMBER	REV. NO.
PROCESS WASTE HEAT UTILIZATION	H5E-14951-0004	1c

MICROFILMED