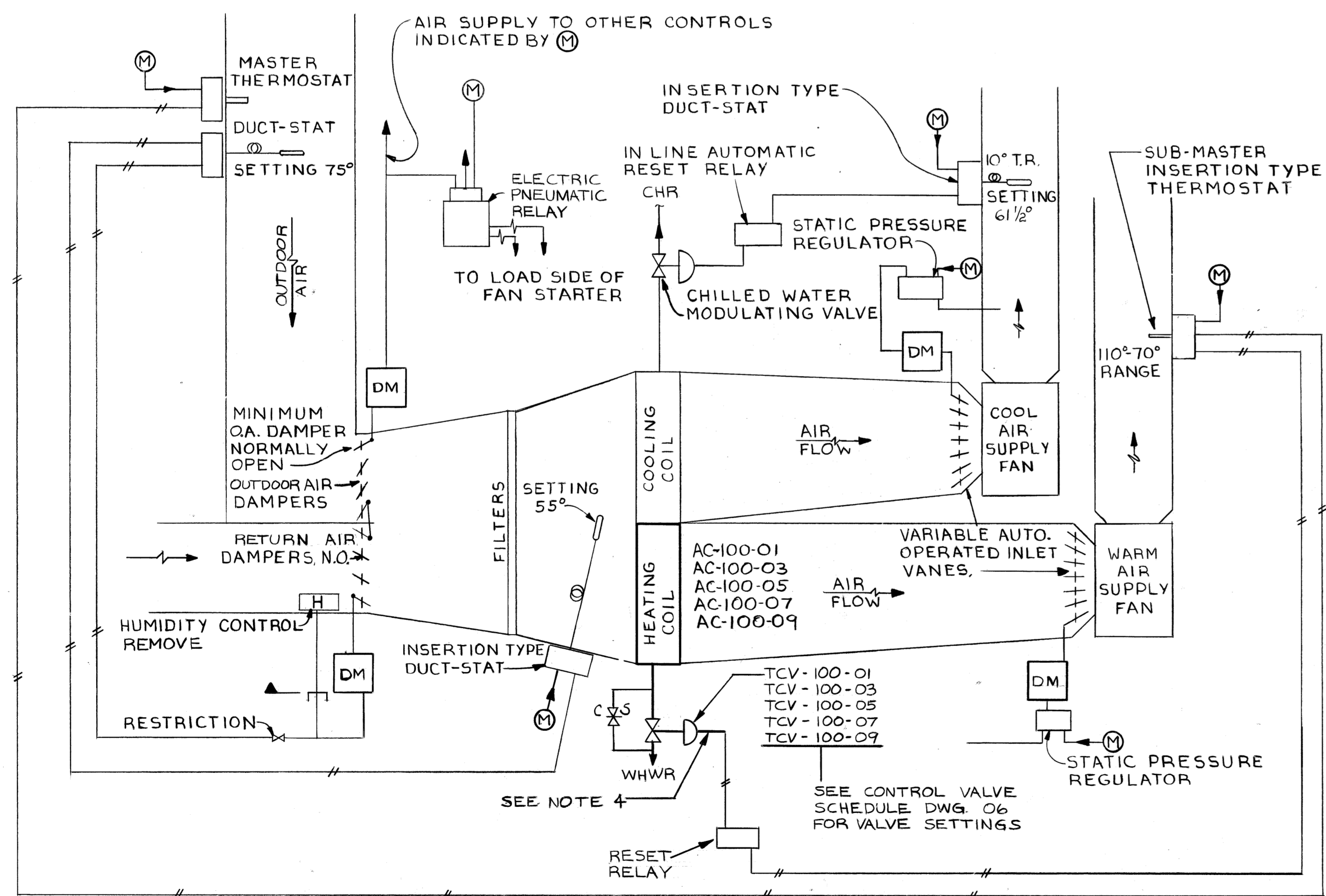


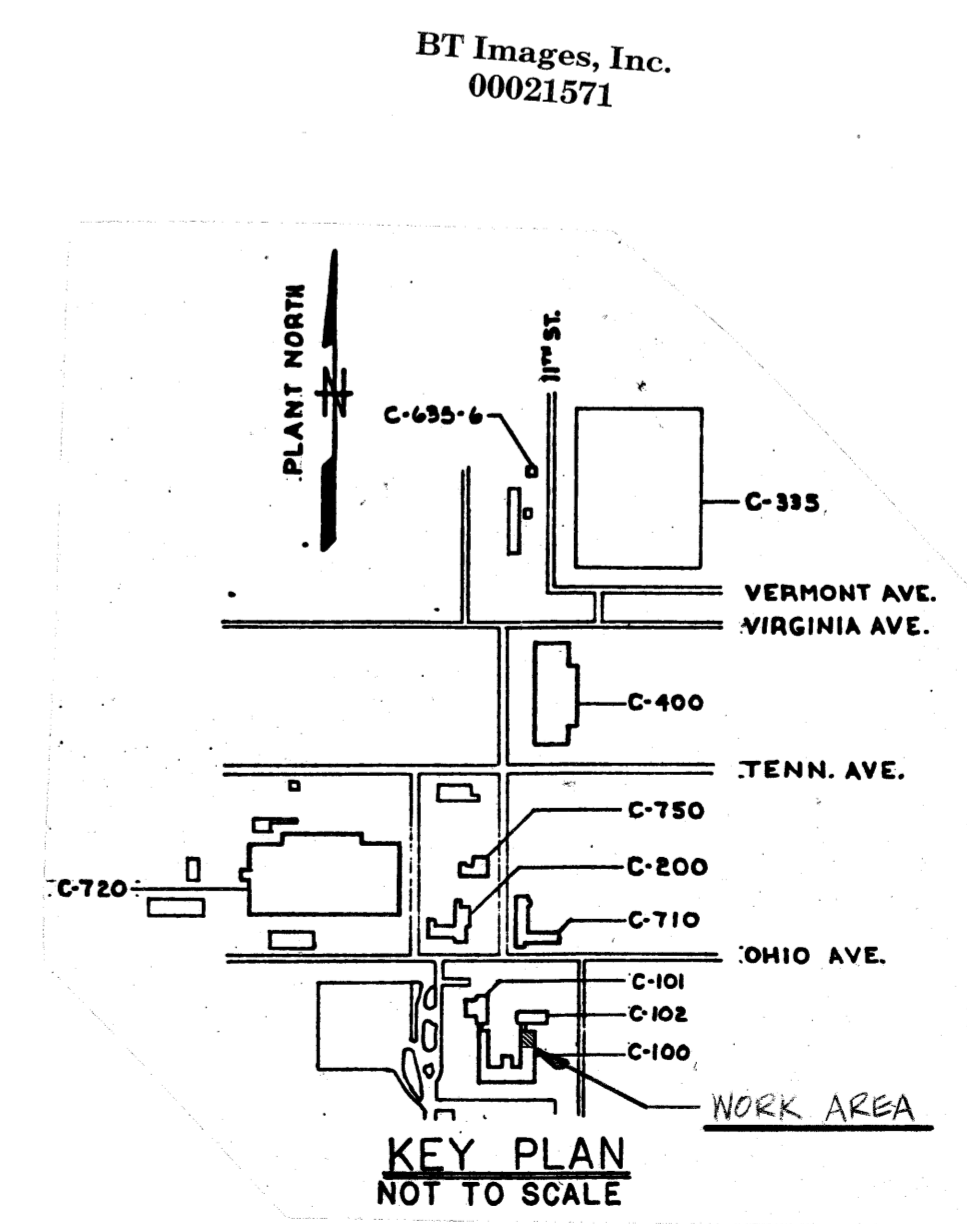
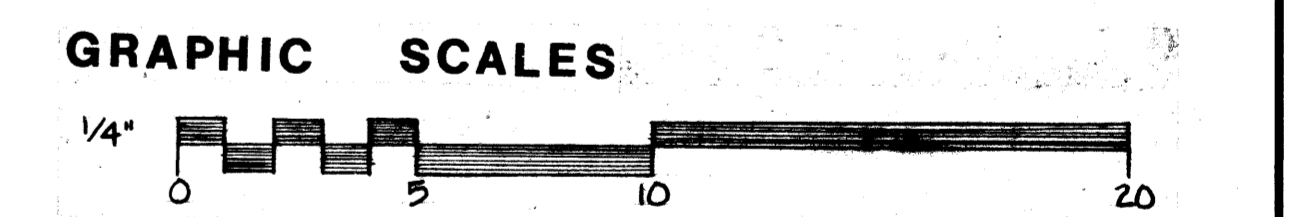
**NOTES**

1. FOR GENERAL NOTES & LEGEND SEE DWG. 01
2. REFER TO DWG. 06 FOR HOT WATER HEATING COIL & CONTROL VALVE SCHEDULES-BLDG. C-100
3. REFER TO THIS DWG. FOR TYPICAL CONTROL DIAGRAM FOR BLDG. C-100



(REFERENCE DWG. B1-7-M JOB NO. 8768) (COILS AC-100-01, -03, -05, -07 AND -09)  
NOTE: THIS DIAGRAM FOR REFERENCE ONLY.  
ACTUAL CONTROLS TO BE VERIFIED IN FIELD.

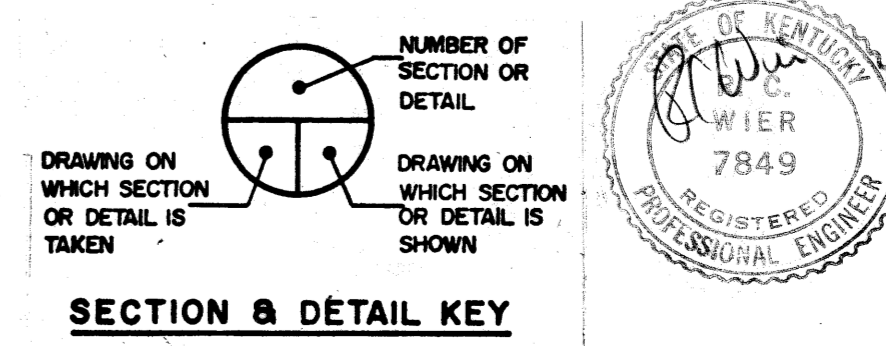
**FOR INFORMATION ONLY**



REVIEWED FOR CLASSIFICATION  
UNCLASSIFIED  
1/26/98

REVIEWED FOR CLASSIFICATION  
SM 06/13/2014  
UNCLASSIFIED

PIPELINE IDENTIFICATION  
8" WWS-138  
SIZE SERVICE SPEC. NO. (MATERIAL)



1c AS BUILT		15/9/81	1/27/81	1/27/81
0 CERTIFIED FOR CONSTRUCTION		12/24/79	1/27/81	1/27/81
REV. NO.	ISSUE PURPOSE (PPSC-6279)	A.E. OPERATOR	DATE	APPROVAL
<b>UNITED STATES DEPARTMENT OF ENERGY</b>				
<b>A. M. KINNEY, INC.</b> CONSULTING ENGINEERS CINCINNATI, OHIO				
HVAC <b>BUILDING C-100</b> <b>NORTHEAST EQUIPMENT ROOM PART PLAN</b>				
DATE	SCALE	DATE	SCALE	DATE
1/26/98	AS NOTED	2/16/79	AS NOTED	2/16/79
PROJECT	DRAWING NUMBER	REV. NO.		
PROCESS WASTE HEAT UTILIZATION	H5E-14951-0003	1c		

**MICROFILMED**