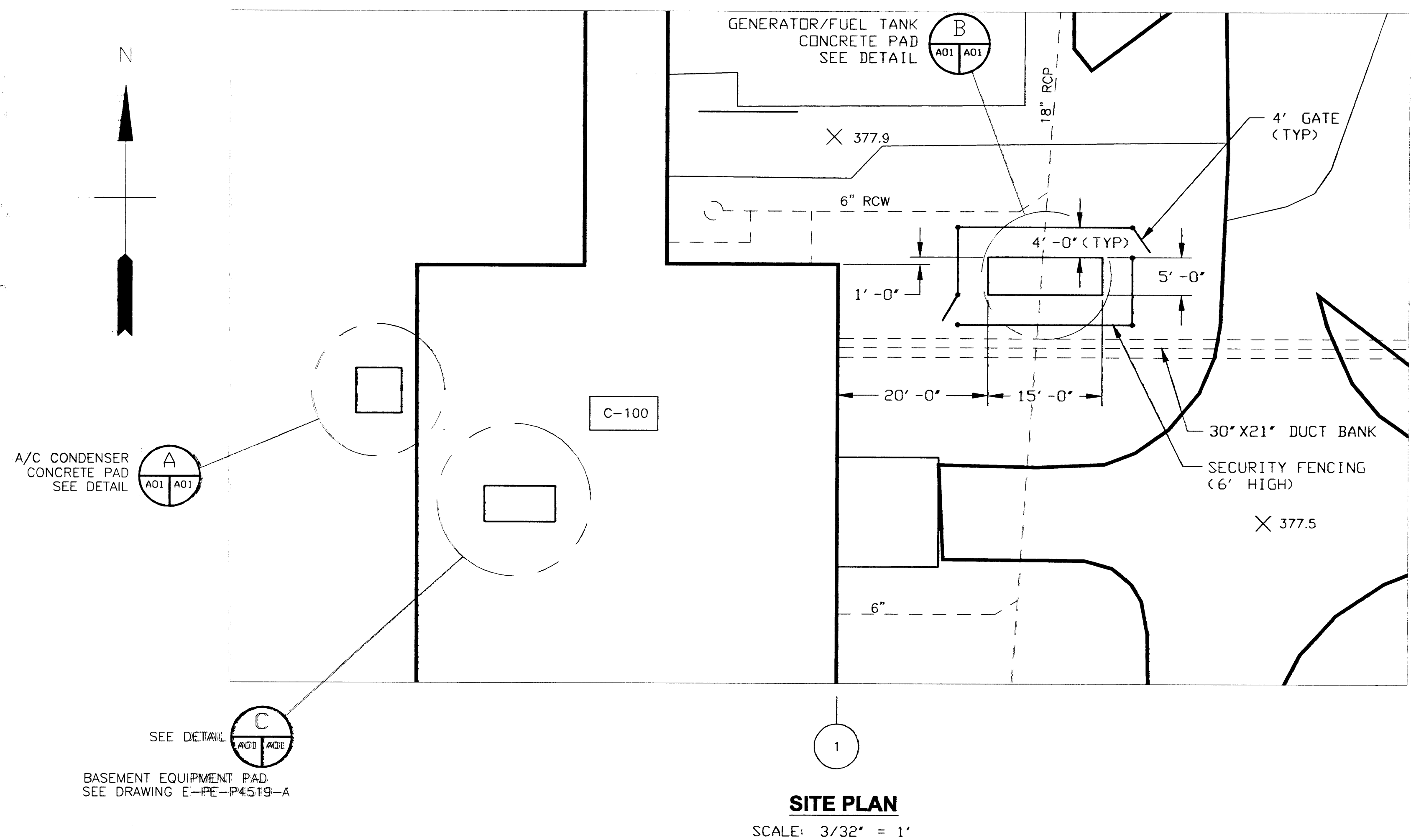
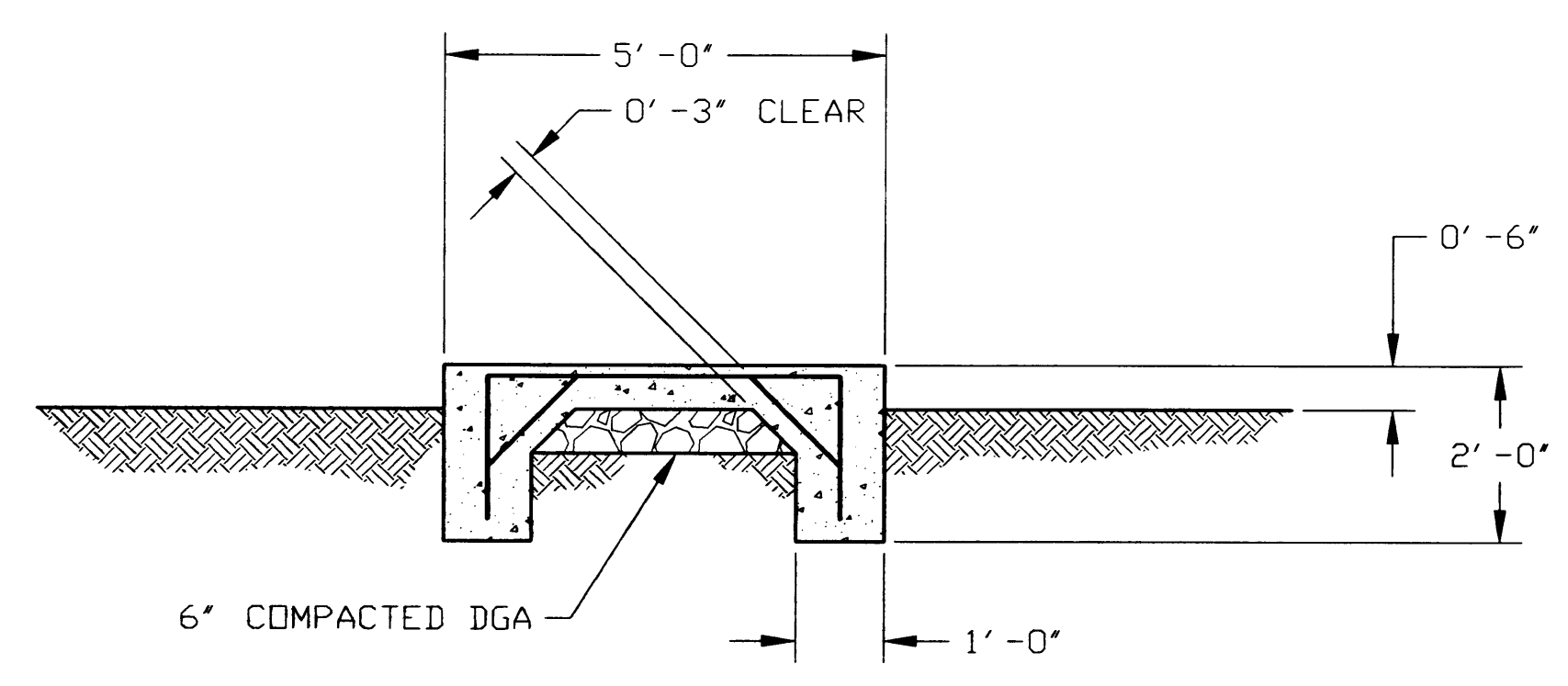


UNCLASSIFIED

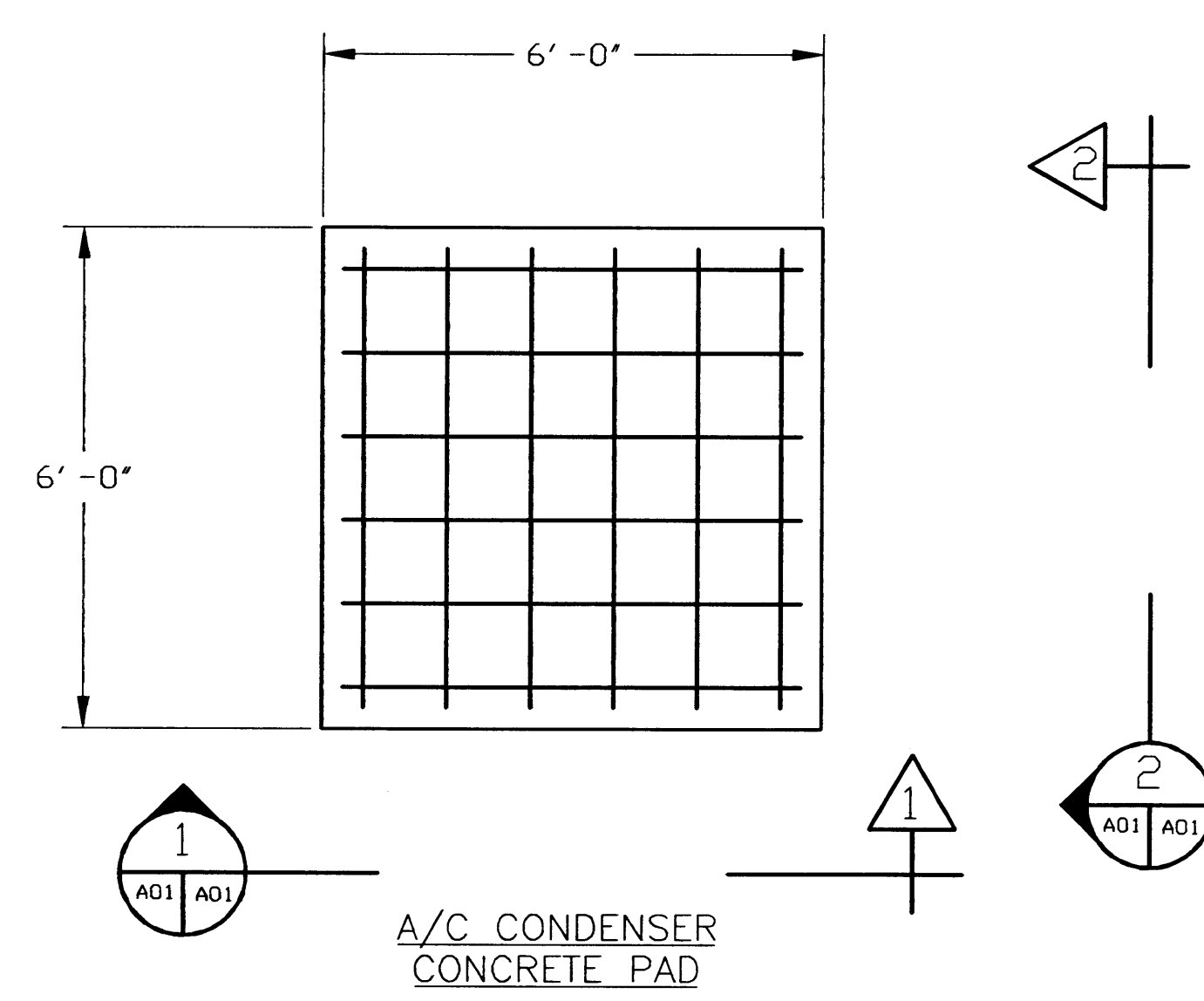


SITE PLAN
SCALE: 3/32" = 1'

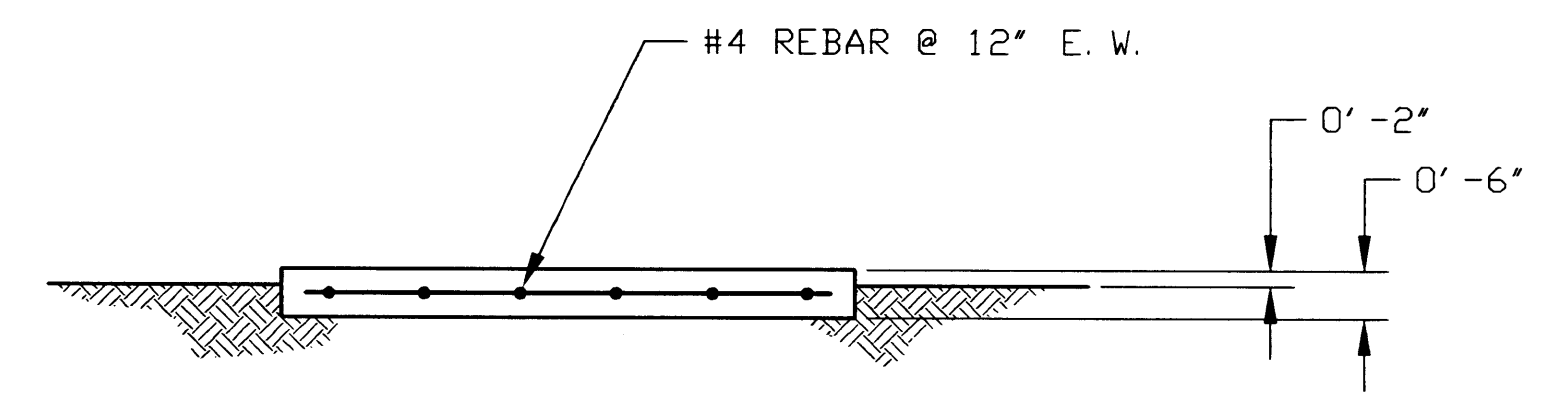


SECTION 3
SCALE: 1/2" = 1'

STRUCTURAL SPECIFICATION:



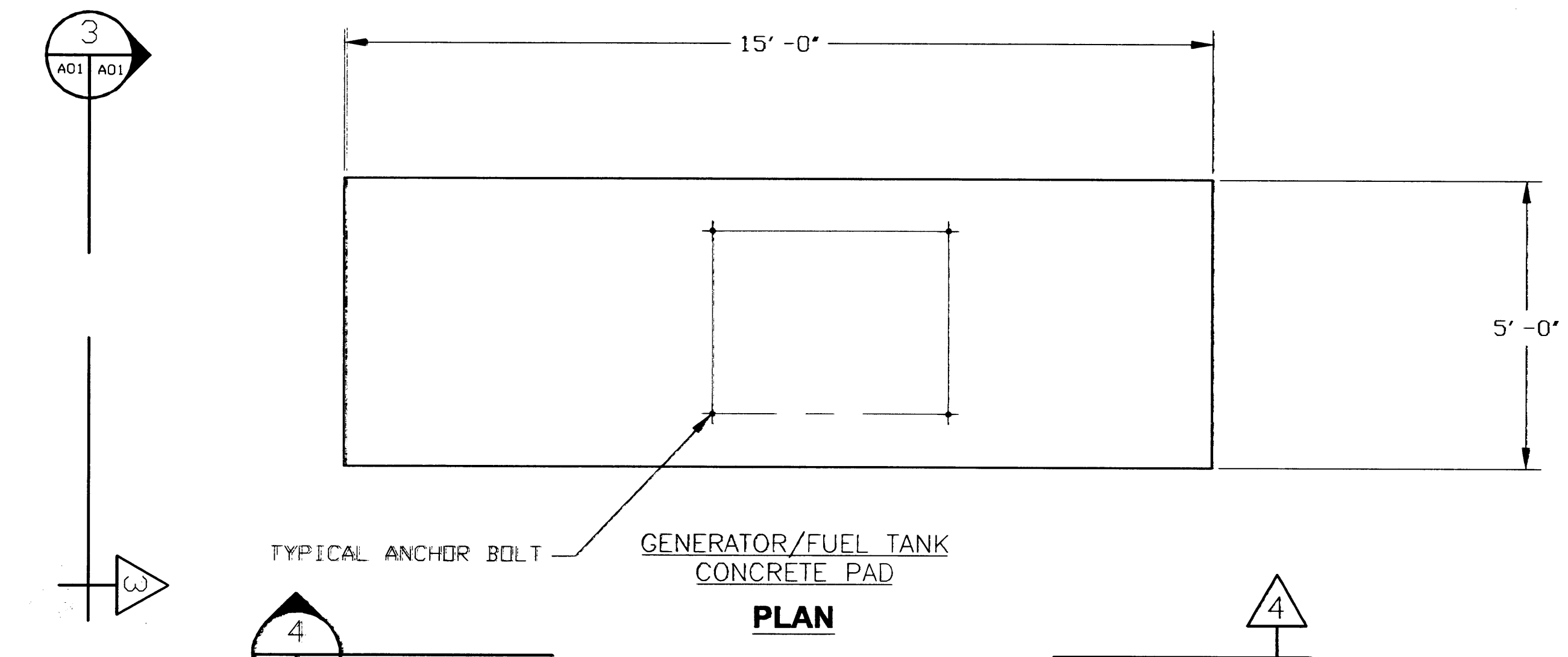
DETAIL A
SCALE: 1/2" = 1'



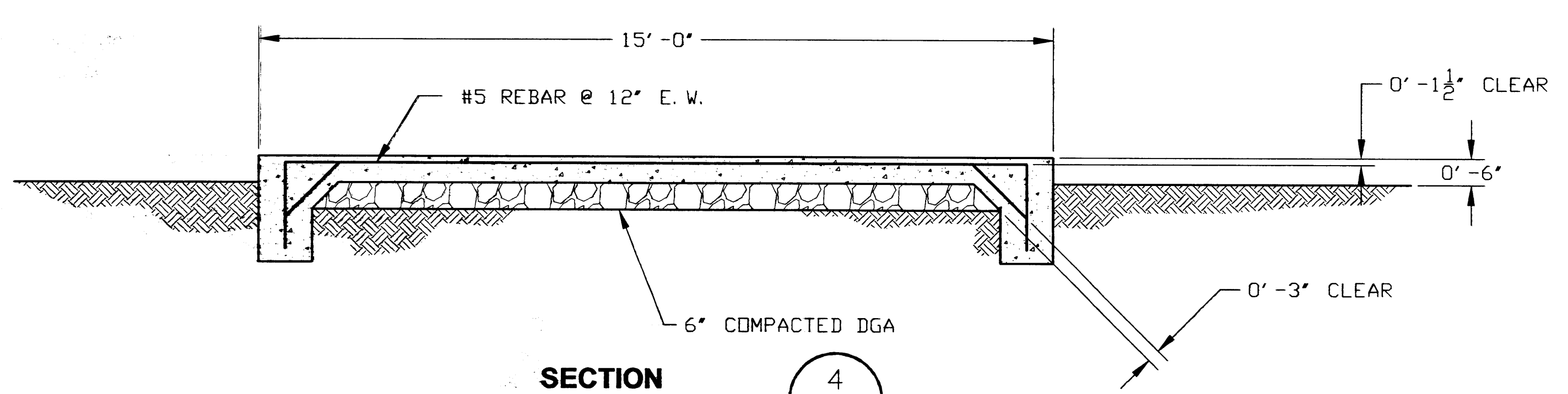
SECTION 1 & 2
SCALE: 1/2" = 1'

REVIEWED FOR CLASSIFICATION
INITIALS: *AW* #297 DATE: 12/16/04
REVIEWED FOR CLASSIFICATION
INITIALS: HDE DATE: 04/29/2014
UNCLASSIFIED NOT UCNI UNCLASSIFIED

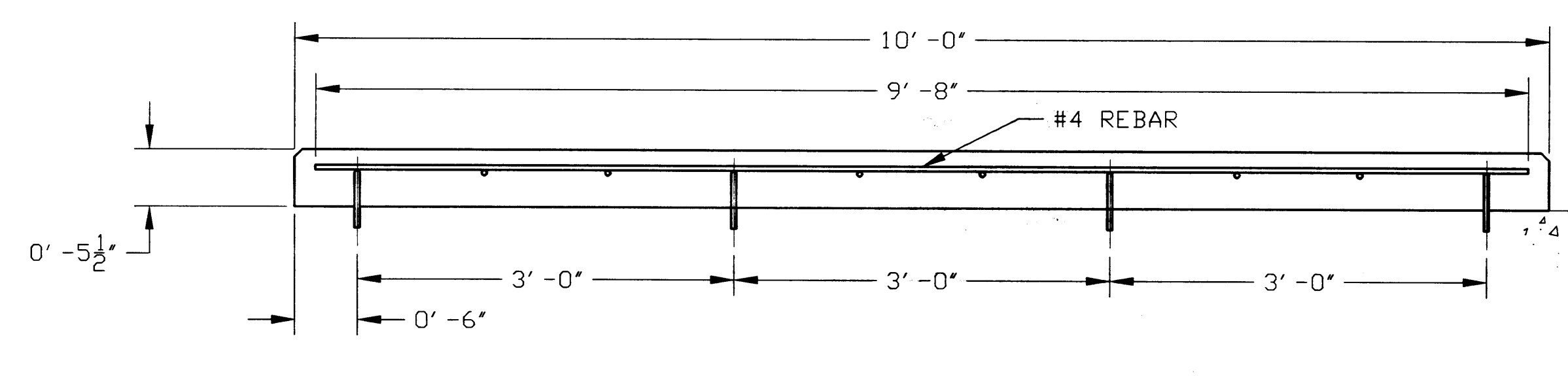
BT Images, Inc.
00108755



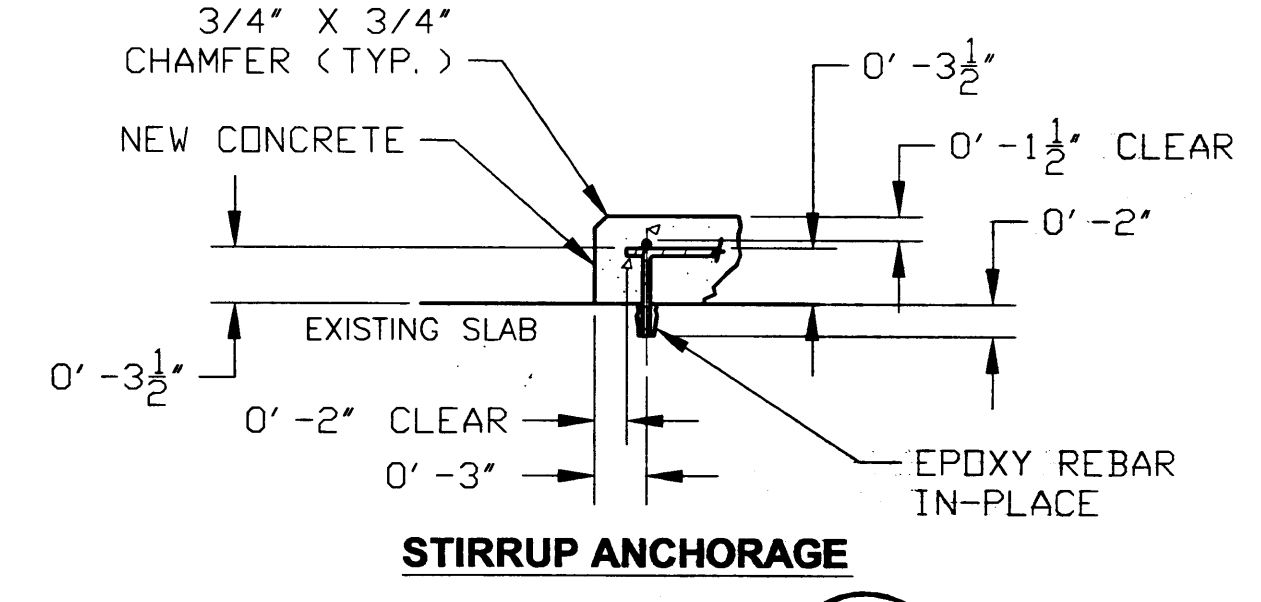
PLAN
SCALE: 1/2" = 1'



SECTION 4
SCALE: 1/2" = 1'

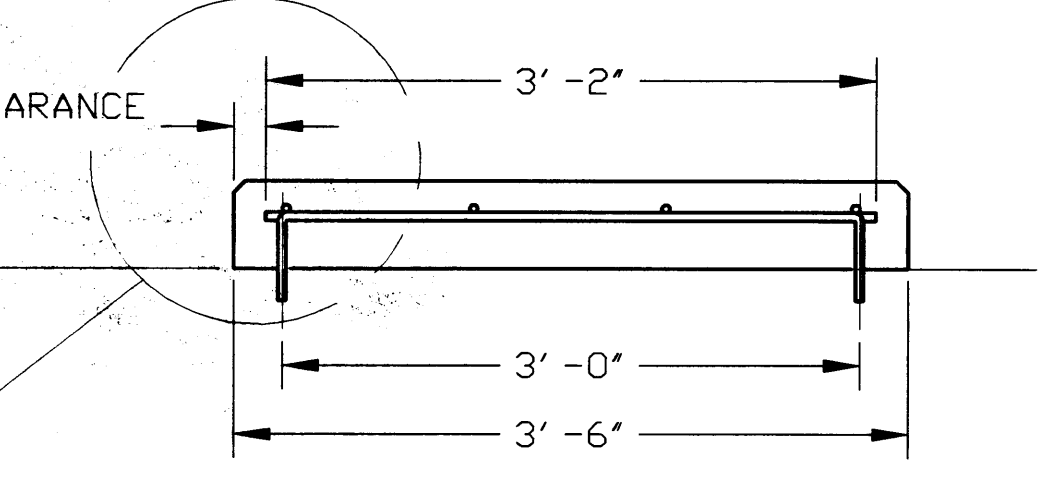


EQUIPMENT PAD
SCALE: 1/2" = 1'

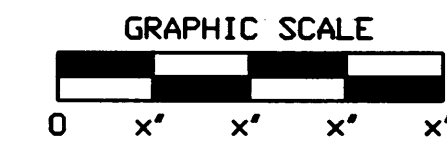


STIRRUP ANCHORAGE
SCALE: 1/2" = 1'

- CONCRETE NOTES:
1. CONCRETE MIN f'c = 3000 psi min.
 2. REBAR SIZE = #4
 3. REBAR MIN Fy = 60,000 psi
 4. CHAMFER ALL EDGES 3/4"
 5. PROVIDE STEEL TROWEL FINISH
 6. LET CURE A MIN. OF 3 DAYS BEFORE INSTALLING EQUIPMENT.



STIRRUP DETAIL



UNCLASSIFIED

SECTION NUMBER OR DETAIL LETTER	DRAWING ON WHICH SECTION OR DETAIL IS TAKEN	DRAWING ON WHICH SECTION OR DETAIL IS SHOWN

TOLERANCES UNLESS OTHERWISE SPECIFIED	
FRACTIONS	± 1/16"
XX DECIMALS	± 0.005"
XXX DECIMALS	± 0.001"
ANGLES	± 0.1°
BREAK SHARP EDGES	MAX. FINISH

NO REPRESENTATION OR WARRANTY, EXPRESSED OR IMPLIED, IS MADE THAT THE USE OR DISCLOSURE OF ANY INFORMATION, APPARATUS, METHOD OR PROCESS DISCLOSED IN THESE DRAWINGS MAY NOT INFRINGE PRIVATE RIGHTS OF OTHERS. NO LIABILITY IS ASSUMED WITH RESPECT TO THE USE OF, OR FOR DAMAGES RESULTING FROM THE USE OF ANY INFORMATION, APPARATUS, METHOD OR PROCESS DISCLOSED IN THESE DRAWINGS. THE DRAWINGS ARE BEING MADE FOR INFORMATION TO BIDDER AND ARE NOT TO BE USED FOR OTHER PURPOSES, AND ARE TO BE RETURNED UPON REQUEST OF THE FORWARDING CONTRACTOR.

THIS DRAWING PRODUCED ON AUTOCAD DO NOT REVISE MANUALLY

REV. NO.	DATE	BY	CHKD	APPD	ISSUE / REVISION DESCRIPTION
0					AS BUILT ENTIRE DRAWING FOR ESO ZA5350
A2					CERTIFIED FOR CONSTRUCTION FOR ESO ZA5350 PER ECN-2003-2086 FOR ORIGINAL SIGNATURES REFERENCE REVISION A2
A1	5/16/03	MG	PAC	PAC	CERTIFIED FOR CONSTRUCTION FOR ESO ZA5350

USEC UNITED STATES ENRICHMENT CORP.
P. O. BOX 1410 PADUCAH, KENTUCKY 42002-1410

UNINTERRUPTIBLE POWER SUPPLY SYSTEM
FOR C-100 COMPUTER ROOM
CONCRETE PADS - PLANS & DETAILS
PRIORITY 3

SCALE NOTED	PLANT PGDP	BLDG AREA	FL X	CLASS U
ID ZA5350	C5E-ZA5350-A01			REV 0