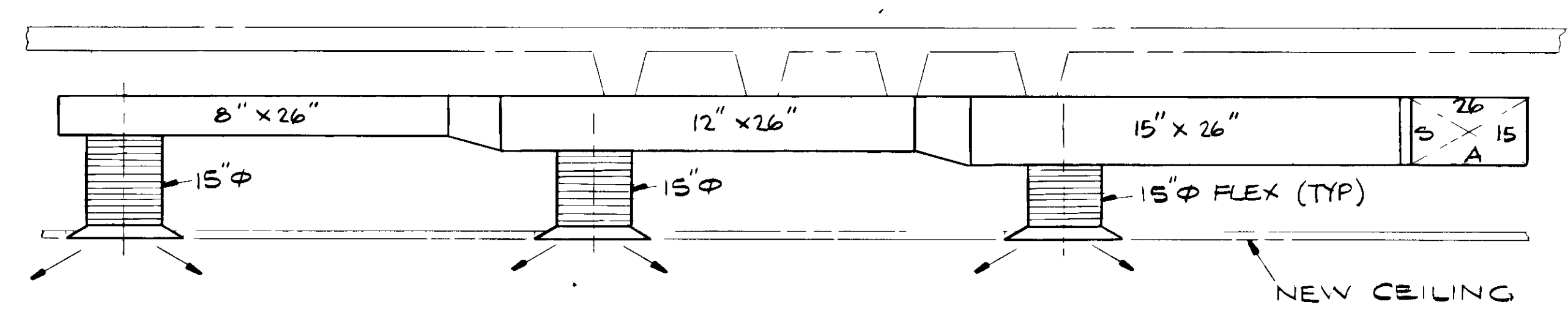


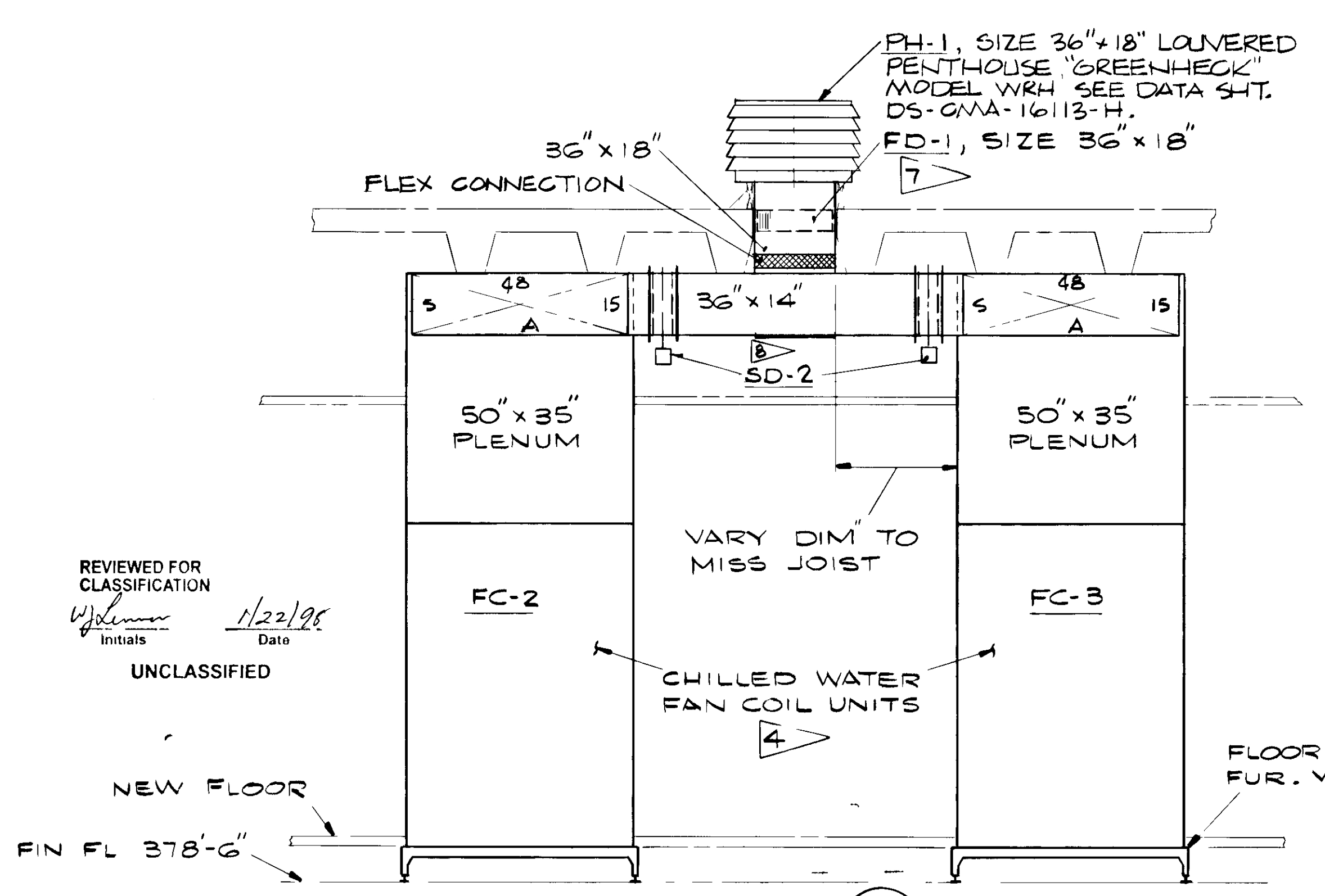
**PLAN VIEW**  
SCALE: 1/2" = 1'-0"

**GENERAL NOTES**

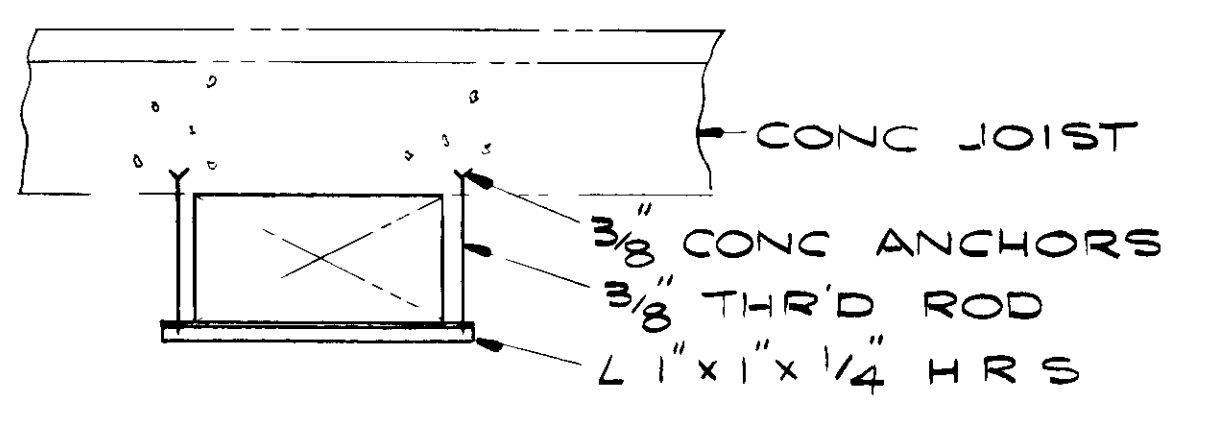
- 1 ALL WORK SHALL BE IN ACCORDANCE WITH THE SUB-CONTRACT SPECS
- 2 ALL RECTANGULAR DUCT SHALL BE 24 GA GALV ST'L WITH STANDING "S" LOCK ON 4 FT CENTERS WITH PITTSBURGH LOCK SEAM, INTERNALLY INSULATED WITH 1" ACCOUSTICAL LINER AS PER SPEC
- 3 50" X 35" DISCHARGE PLENUM SHALL BE 22 GA ST'L, INTERNALLY INSULATED WITH 1" ACCOUSTICAL LINER AS PER SPEC
- 4 FC-2 AND 3 CHILLED WATER FAN COIL UNIT AS PER DATA SHT DS-CMA-10113-A SHALL BE "LIEBERT" MODEL UPFLOW UH-147C OR APPROVED EQUAL. UNIT SHALL INCLUDE INFRA-RED HUMIDIFIER, 3 STAGE 15 KVV FIN TUBULAR ELECTRIC REHEAT, 4" FILTERS. UNIT SHALL OPERATE ON 208 V 3P-60 HZ POWER SUPPLY UNIT SHALL OPERATE AT 5250 CFM @ 3" WG STATIC PRESSURE
- 5 SG-2 CEILING SUPPLY DIFFUSER SHALL BE "ANEMOSTAT" EPL-150 OR APPROVED EQUAL LAY-IN PANEL TYPE, SIZE 24" X 24" WITH 15" NECK SEE DATA SHT DS-CMA-10113-B.
- 6 G1-GRILL SHALL BE "ANEMOSTAT" MODEL NSB OR APPROVED EQUAL. SIZE 36" X 24" SEE DATA SHT DS-CMA-10113-C
- 7 FD-1 AND 2 FIRE DAMPERS SHALL BE "RUSKIN" MODEL 1BD2 & 1BDT OR APPR. EQUAL SEE DATA SHT DS-CMA-10113-D & E.
- 8 SD-1 AND 2 MOTORIZED DAMPERS SHALL BE "RUSKIN" MODEL SD35 OR APPROVED EQUAL SEE DATA SHT. DS-CMA-10113-F & G



**SECTION 1 A/A**



**SECTION 2 A/A**



**SUPPORT DETAIL S-1**  
N.T.S

REVIEWED FOR CLASSIFICATION  
HDE 05/13/2014  
Initials Date  
UNCLASSIFIED

REVIEWED FOR CLASSIFICATION  
1/22/98  
Initials Date  
UNCLASSIFIED

NO REPRESENTATION OR WARRANTY, EXPRESSED OR IMPLIED, IS MADE THAT THE USE OR DISCLOSURE OF ANY INFORMATION, APPARATUS, METHOD OR PROCESS DISCLOSED IN THESE DRAWINGS, MAY NOT INFRINGE PRIVATE RIGHTS OF OTHERS. NO LIABILITY IS ASSUMED WITH RESPECT TO THE USE OF OR FOR DAMAGES RESULTING FROM THE USE OF ANY INFORMATION APPARATUS, METHOD OR PROCESS DISCLOSED IN THESE DRAWINGS. THE DRAWINGS ARE BEING MADE AVAILABLE FOR INFORMATION TO BIDDER AND ARE NOT TO BE USED FOR OTHER PURPOSES, AND ARE TO BE RETURNED UPON REQUEST OF THE FORWARDING CONTRACTOR.

**SECTION & DETAIL LEGEND**

SECTION NUMBER OR DETAIL LETTER	SHEET WHERE DETAIL OR SECTION IS SHOWN
(1) A/A	SECTION 1 A/A
(S-1)	SUPPORT DETAIL S-1

BY	DATE	SECT	REV	DESCRIPTION	BY	CHK	RED	SECT	DEPT	DATE	PE	REQ	DATE	MMES	DATE	DOE	DATE	QE	CA	EC	EE	MD	IE	MA	CP	SE	CE
DFS	12-26-86	MRE	0	FOR APPROVAL - TITLE II CFC PISC # 8147	CC	THW	MMB																				

TOLERANCES UNLESS OTHERWISE SPECIFIED	DES	M W	I H	NEN	DATE
FRACTIONS ±	DRW	C	CUMMINGS		12-84
XX DECIMALS ±	CHK	M			3-85
XXX DECIMALS ±	SECT	W			3-85
ANGLES	DEPT & PLANT				3-85
BREAK SHARP EDGES MAX FINISH	DWG				3-85
	DIVISION				1/12
	REQUESTER	JCA			3-85
	FIRE / SECURITY	JRW/CJN			3-85
	SAFETY	MM			3-85
	IND HYGIENE	QNT			3-85
	MAINTENANCE	CHK			3-85
	DOE				

<b>MARTIN MARIETTA</b> MARTIN MARIETTA ENERGY SYSTEMS, INC. operated for the DEPARTMENT OF ENERGY under U.S. GOVERNMENT CONTRACT DE AC 05 840021400 Oak Ridge, Tennessee Paducah, Kentucky	
<b>MMS COMPUTER FACILITIES</b> HEATING VENTILATING & AIR-CONDITIONING PLAN	
MMS COMP FAC HVAC PLAN	
TYPE	S
CLASS	U
REV	0
SCALE	1/2" = 1'-0"
ID	16113 MSE 16113
CLASS	A