

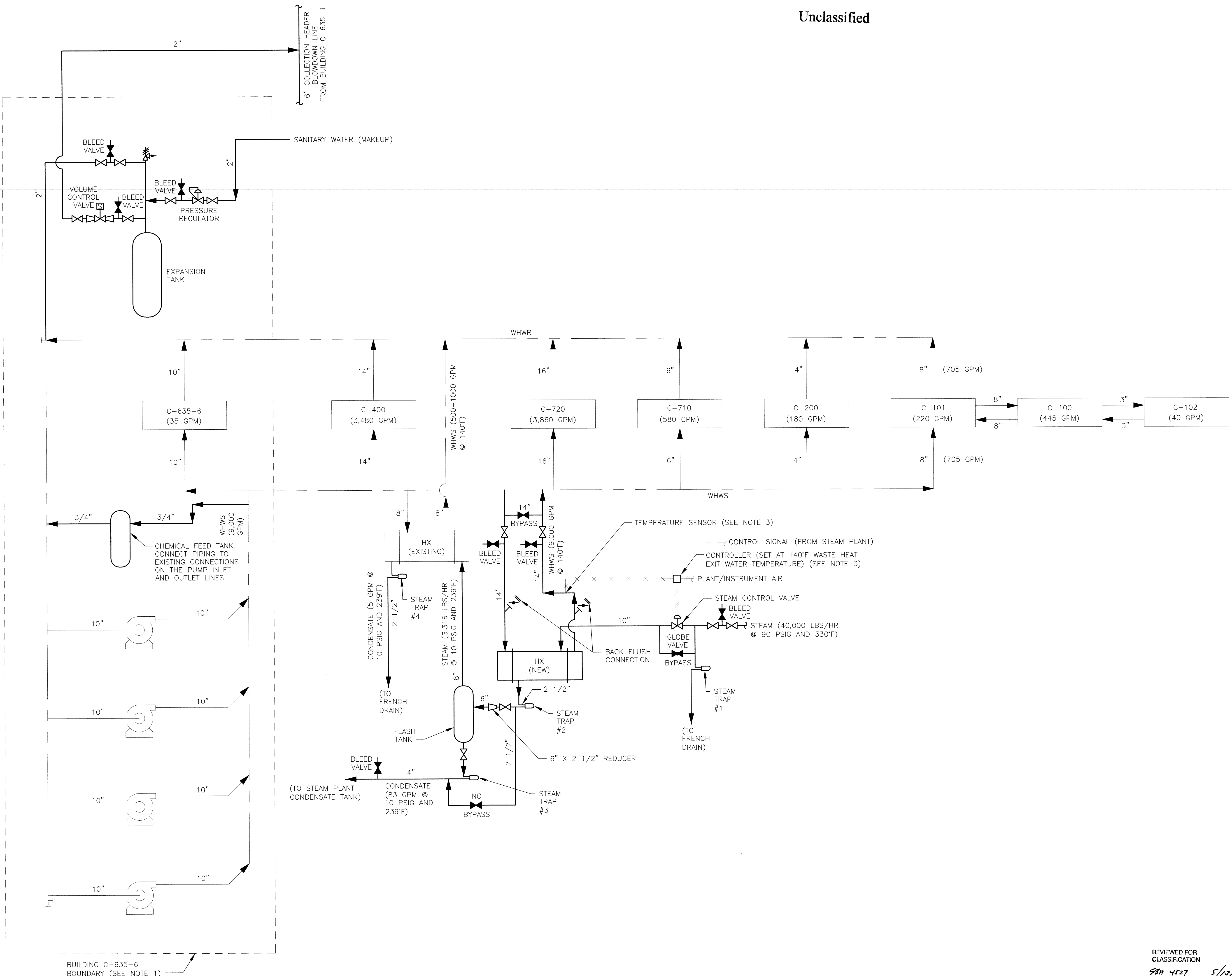
Unclassified

NOTES:

- BUILDING C-635-6 PIPING DETAILS SHOWN ON DRAWING M5E-ZB9890-B01.
- HEAT EXCHANGER PIPING DETAILS SHOWN ON DRAWING M5E-ZB9890-C03.
- SEE DRAWINGS M5E-ZB9890-A02, -A03, AND -A04 FOR INSTRUMENT DETAILS.
- SEE DRAWING M5E-ZB9890-C02 FOR BILL OF MATERIALS.
- 1 INCH HIGH POINT VENTS AND LOW POINT DRAINS WITH BALL VALVES SHALL BE INSTALLED IN ALL NEW PIPING TO FACILITATE SYSTEM START UP, OPERATION, AND MAINTENANCE.
- ALL PIPING AND EQUIPMENT TAKEN OUT OF SERVICE AND SUBJECT TO FREEZING CONDITIONS SHALL BE DRAINED TO PREVENT DAMAGE FROM FREEZING.

LEGEND:

- NEW
- EXISTING
- ELECTRICAL SIGNAL
- PNEUMATIC SIGNAL
- CAPILLARY TUBE
- PUMP
- PRESSURE RELIEF VALVE
- STEAM CONTROL VALVE
- STEAM TRAP
- BACKFLUSH CONNECTION
- EXPANSION TANK, CHEMICAL FEED TANK, OR FLASH TANK AS NOTED



REVIEWED FOR CLASSIFICATION
 Initials: *SM 4507* Date: *5/2/12*

UNCLASSIFIED
 NOT UCNI

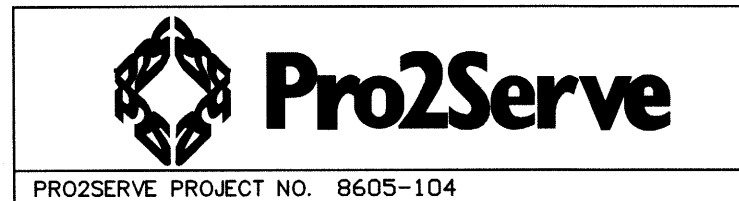


Image # 118991

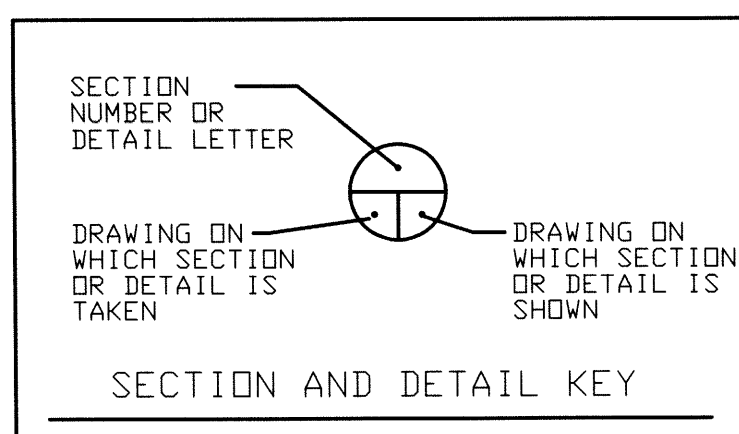
PRO2SERVE PROJECT NO. 9605-104
 UNITED STATES ENRICHMENT CORP.
 P.O. BOX 1410
 PADUCAH, KENTUCKY 42002-1410

DRW *Paula Cox* 4/29/13
 CHKR *Kevin J. Roberts* 4/29/13
 RED *E. J. Feltner* 4/29/13
 TR NA
 APPD *Paula Cox* 4/29/13

WASTE HEAT SYSTEM CONVERSION
 FLOW DIAGRAM

PRIORITY 3

SCALE	PLANT PGDP	BLDG AREA	FL	SHT	OF	SHT	CLASS
NONE							U
ID	M5E-ZB9890-A01		REV		A1		
ESD ZB9890							



TOLERANCES
 UNLESS OTHERWISE SPECIFIED
 FRACTIONS ± 1/16"
 XX DECIMALS ± .005"
 XXX DECIMALS ± .001"
 ANGLES BREAK SHARP EDGES MAX. FINISH

*NO REPRESENTATION OR WARRANTY, EXPRESSED OR IMPLIED, IS MADE THAT THE USE OR DISCLOSURE OF ANY INFORMATION, APPARATUS, METHOD OR PROCESS DISCLOSED IN THESE DRAWINGS MAY NOT INFRINGE PRIVATE RIGHTS OF OTHERS. NO LIABILITY IS ASSUMED WITH RESPECT TO THE USE OF OR FOR DAMAGES RESULTING FROM THE USE OF ANY INFORMATION, APPARATUS, METHOD OR PROCESS DISCLOSED IN THESE DRAWINGS. THE DRAWINGS ARE BEING MADE FOR INFORMATION TO BIDDER AND ARE NOT TO BE USED FOR OTHER PURPOSES, AND ARE TO BE RETURNED UPON REQUEST OF THE FORWARDING CONTRACTOR.

REV. NO.	ISSUE / REVISION DESCRIPTION	DATE	BY	CHKD	RE	TR	APPD
A1	CERTIFIED FOR CONSTRUCTION FOR ESD ZB9890						
	ISSUE / REVISION DESCRIPTION						

THIS DRAWING
 PRODUCED ON AUTOCAD
 DO NOT REVISE MANUALLY