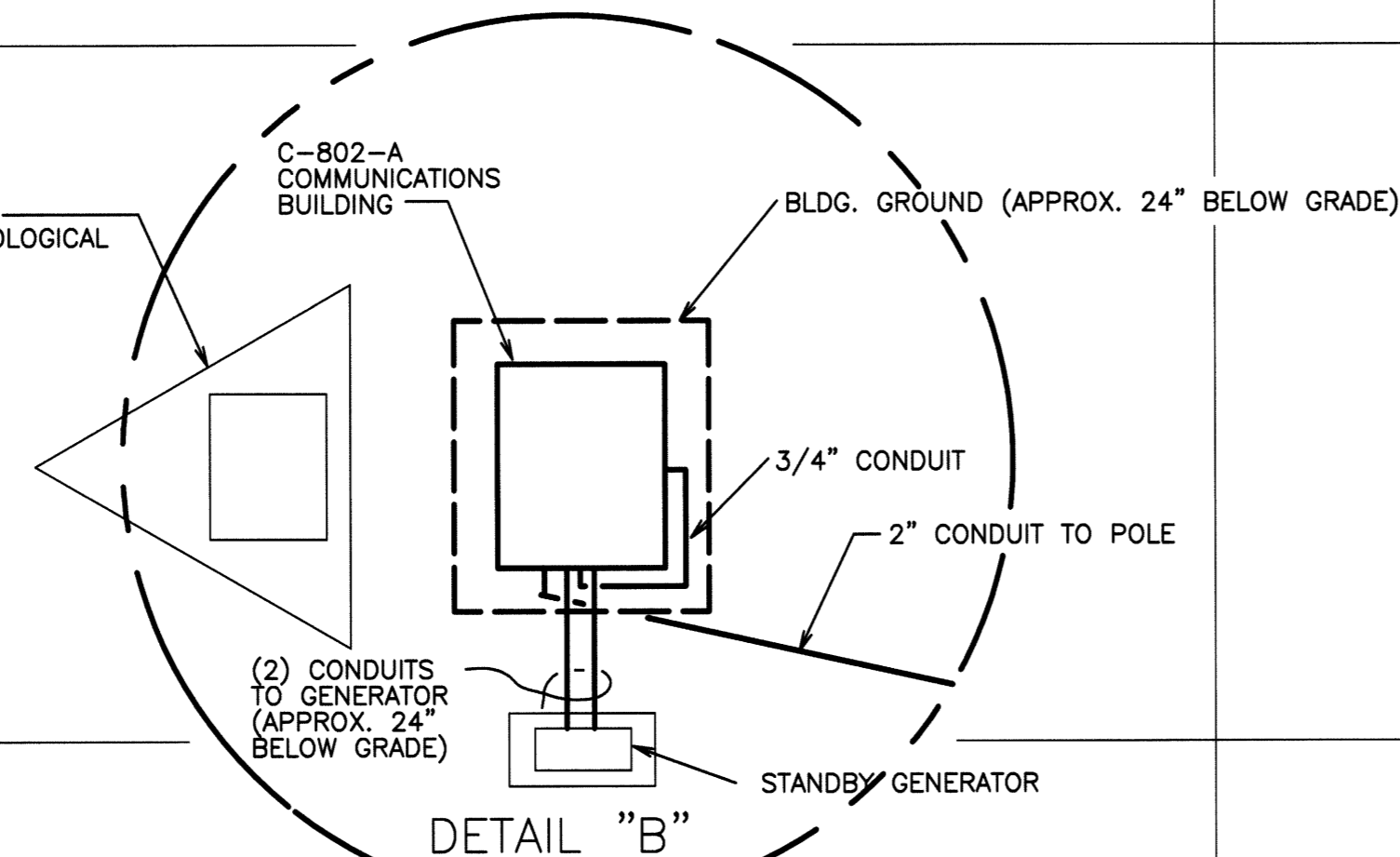
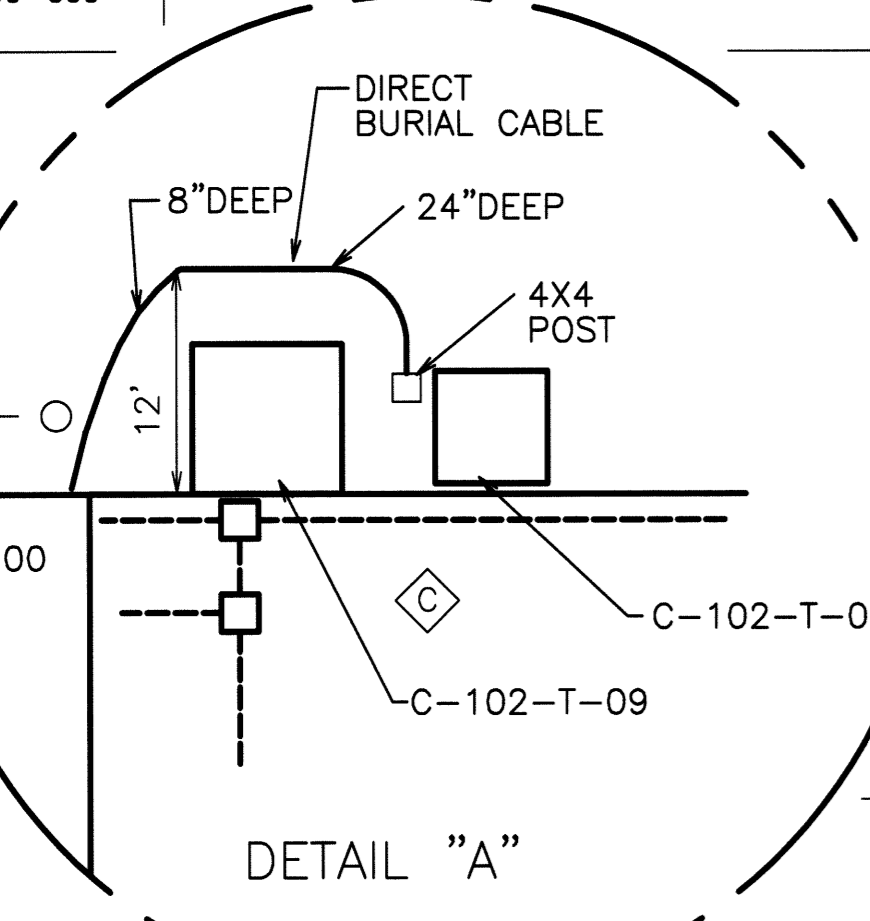


NOTES:
WHERE ENVELOPE SIZES ARE SHOWN FIRST FIGURE SHOWN IS FOR WIDTH OF DUCT.
GROUND LOCATED APPROXIMATELY 6' BEYOND BUILDING FTGS. WITH A MINIMUM COVER OF 2'. EXACT LOCATION TO BE DETERMINED IN FIELD.
ALL ELEVATIONS SHOWN ARE FOR TOPS OF DUCTS.

KEY
— ELECTRICAL DUCTS
--- COMMUNICATIONS
● TELEPHONE POLE
--- GROUND
○ POWER POLE



REVIEWED FOR CLASSIFICATION
KW 06/18/2014
Initials Date
UNCLASSIFIED

REVIEWED FOR CLASSIFICATION
Initials Date
UNCLASSIFIED
NOT UONI

AS-BUILT ENTIRE DWG. PRIORITY 3	7	PAF	MS	DW	TR	3/14/10
REV	DRW	CHKR	RED	TR	APPD	DATE