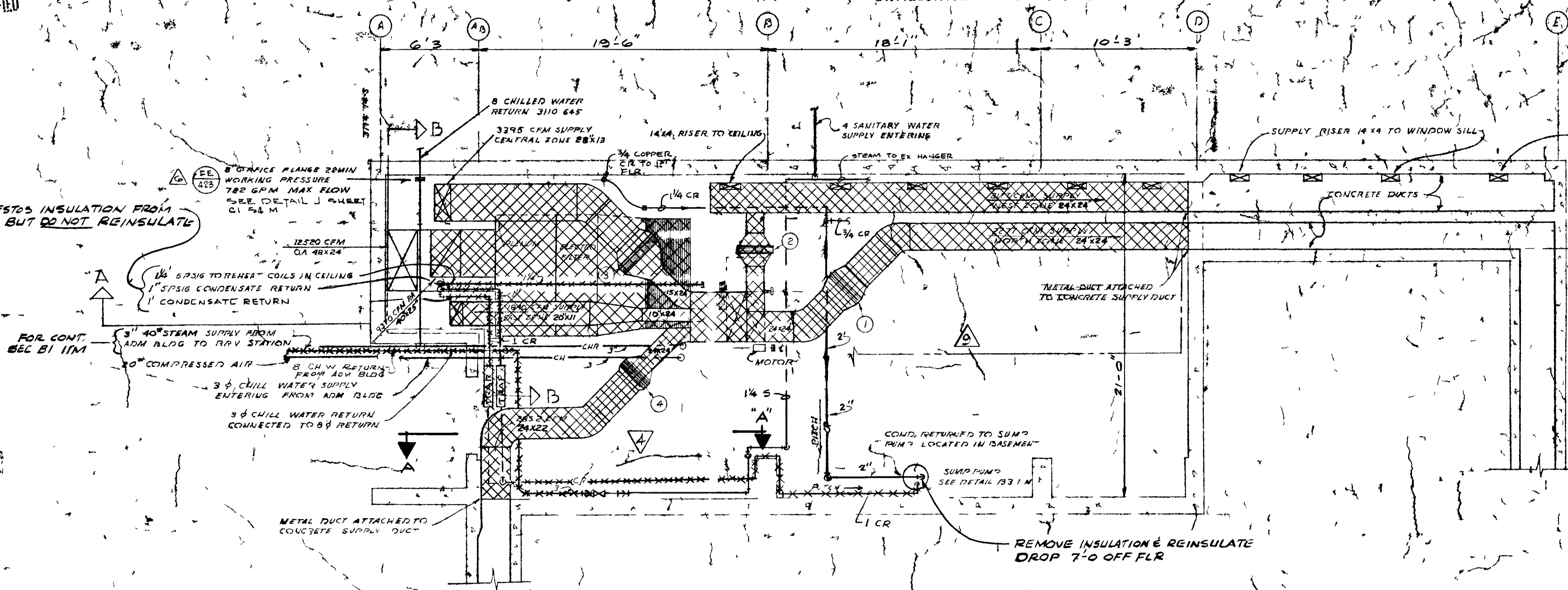


Unclassified

REMOVE ASBESTOS INSULATION FROM THESE LINES BUT DO NOT REINSULATE

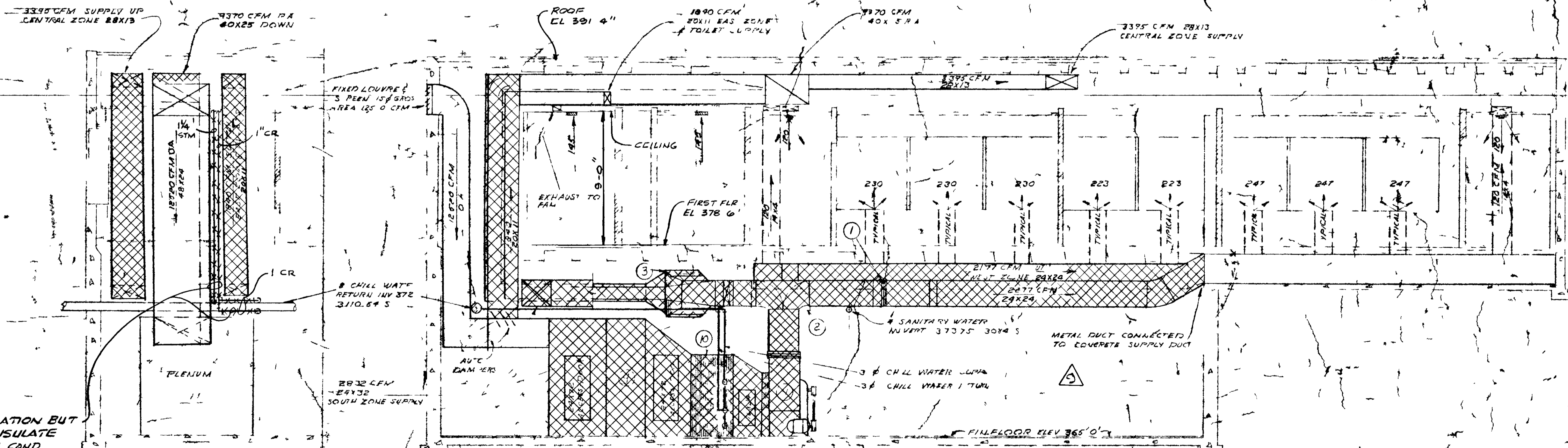


Basement Plan
Scale 1/4" = 1'-0"

SECTION "A-A"
N.T.S.

NOTES

1. ONLY AREAS ENCIRCLED AS REV 9 INCLUDED IN FPSC #A2020
2. REMOVE ASBESTOS INSULATION ON HVAC EQUIPMENT, DUCTWORK AND PIPING AS SHOWN ENCIRCLED AND CROSSHATCHED. REINSULATE, EXCEPT WHERE NOTED, PER SUBCONTRACT SPLL'S



ELEVATION SECTION
Scale 1/4" = 1'-0"

EXHAUST FAN SCHEDULE

FAN NO.	CFM	SP. WG.	HP	RPM	TYPE	SERVE
1	400	1/4"	1/2	1725	INDUSTRIAL	PLUMBING
2	600	1/4"	1/2	1140	INDUSTRIAL	PLUMBING
3	360	1/4"	1/2	1725	INDUSTRIAL	PLUMBING
4	100	1/4"	1/2	1725	INDUSTRIAL	PLUMBING
5	1650	5/8"	1/2	643	INDUSTRIAL	PLUMBING
6	550	1/4"	1/2	1140	INDUSTRIAL	PLUMBING

REHEAT COIL SCHEDULE

COIL NO.	CFM	FACE VEL	TEMP. DIFF.	AREA	CON.	CFM	SERVE
1	115,000	500	49	95.3	4.6	119	NORTH ZONE
2	80,000	500	49	67.7	4.4	83	WEST ZONE
3	12,000	500	49	6.8	1.6	32.5	CENTRAL ZONE
4	109,000	500	49	84.7	5.7	117	SOUTH ZONE
5	8700	500	49	82.7	0.48	9.1	WEST WAREHOUSE
6	11,200	500	49	59.7	0.59	12.1	WEST WAREHOUSE
7	79,300	500	49	84.7	1.0	32.5	WEST ZONE
8	33,400	500	49	87.9	1.8	35.8	EAST ZONE

NOTES

9. FILTER - ELECTRONIC PRECIPITATOR SELF-CLEANING TYPE RATED AT 90% EFFICIENCY 1375 CFM AT 400 RPM FACE VEL AMERICAN AIR FILTER ELECTRO-MATIC MODEL E NO 8 BACOR APPROVED EQUAL
10. DEHUMIDIFIER UNIT - COMPLETE WITH COILS SPRAY HEATS CIRCULATING PUMP & ELIMINATOR. COILS RATED AT 175 HSTG/HR. 1500 BTU/HR. 100% WATER DROP THRU RAIN COIL CIRCULATING PUMP RATED AT 22 GPM AT 2000 RPM 1/2 HP 1750 RPM 80 CYCLES-CHILLER COIL. BASE UNIT 24" X 73" X 24" 27,597 BTU/HR. 4 RPM ON APPROVED EQUAL
11. FAN - 36" WHEEL 5 1/2" W. 1375 CFM 4 1/2" P. 44.2 HP 890 RPM 1/2 HP 1750 RPM 80 CYCLES-CHILLER COIL. BASE UNIT 24" X 73" X 24" 27,597 BTU/HR. 4 RPM ON APPROVED EQUAL

REVIEWED FOR CLASSIFICATION
JBB 05/16/2014
Initials Date
UNCLASSIFIED

BT Image 8 In 00051500

DISC	CP	IE	EE	MD	CA

NO.	DATE	DESCRIPTION	BY	CHKD
9	2/1/88	ASBESTOS REMOVAL & REINSULATION	JBB	JBB
8	1/16/85	AS BUILT	JBB	JBB
7	11/15/84	DEVIATION REQUEST NO. 628 BACOR	JBB	JBB
6	5/14/82	DEVIATION REQUEST NO. 458	JBB	JBB
5	3/16/82	DEVIATION REQUEST NO. 373 M	JBB	JBB
4	1/11/81	REVISION REQUEST NO. 101	JBB	JBB
3	11/11/80	REVISION REQUEST NO. 58	JBB	JBB
2	11/25/80	CONSTRUCTION '73	JBB	JBB
1	1/18/81	APPROVAL 'A' P.E.	JBB	JBB

UNITED STATES
ATOMIC ENERGY COMMISSION

SMITH HINCHMAN & GRYLLS, INC.
ARCHITECTS & ENGINEERS
DETROIT 26 MICHIGAN
D 4W180 T L E

AIR CONDITIONING
BASEMENT PLAN & SECTION

8768

Unclassified

DEPARTMENT OF ENERGY
REVISIONS

1	ASBESTOS REMOVAL & REINSULATION
2	CONSTRUCTION '73
3	REVISION REQUEST NO. 58
4	REVISION REQUEST NO. 101
5	REVISION REQUEST NO. 373 M
6	REVISION REQUEST NO. 458
7	DEVIATION REQUEST NO. 628 BACOR
8	AS BUILT
9	ASBESTOS REMOVAL & REINSULATION

UNCLASSIFIED