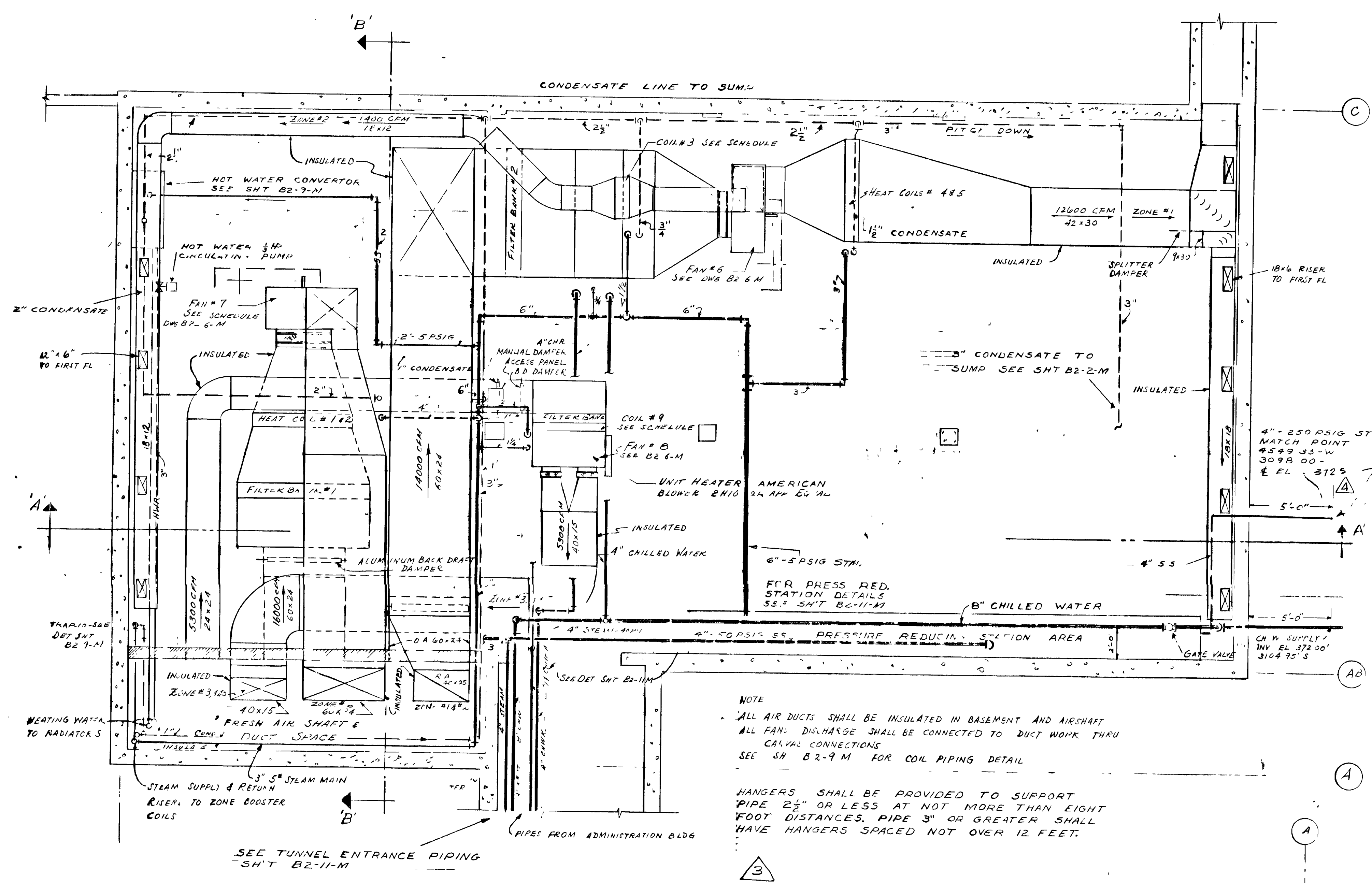


Unclassified



HEATING COIL & TRAP SCHEDULE

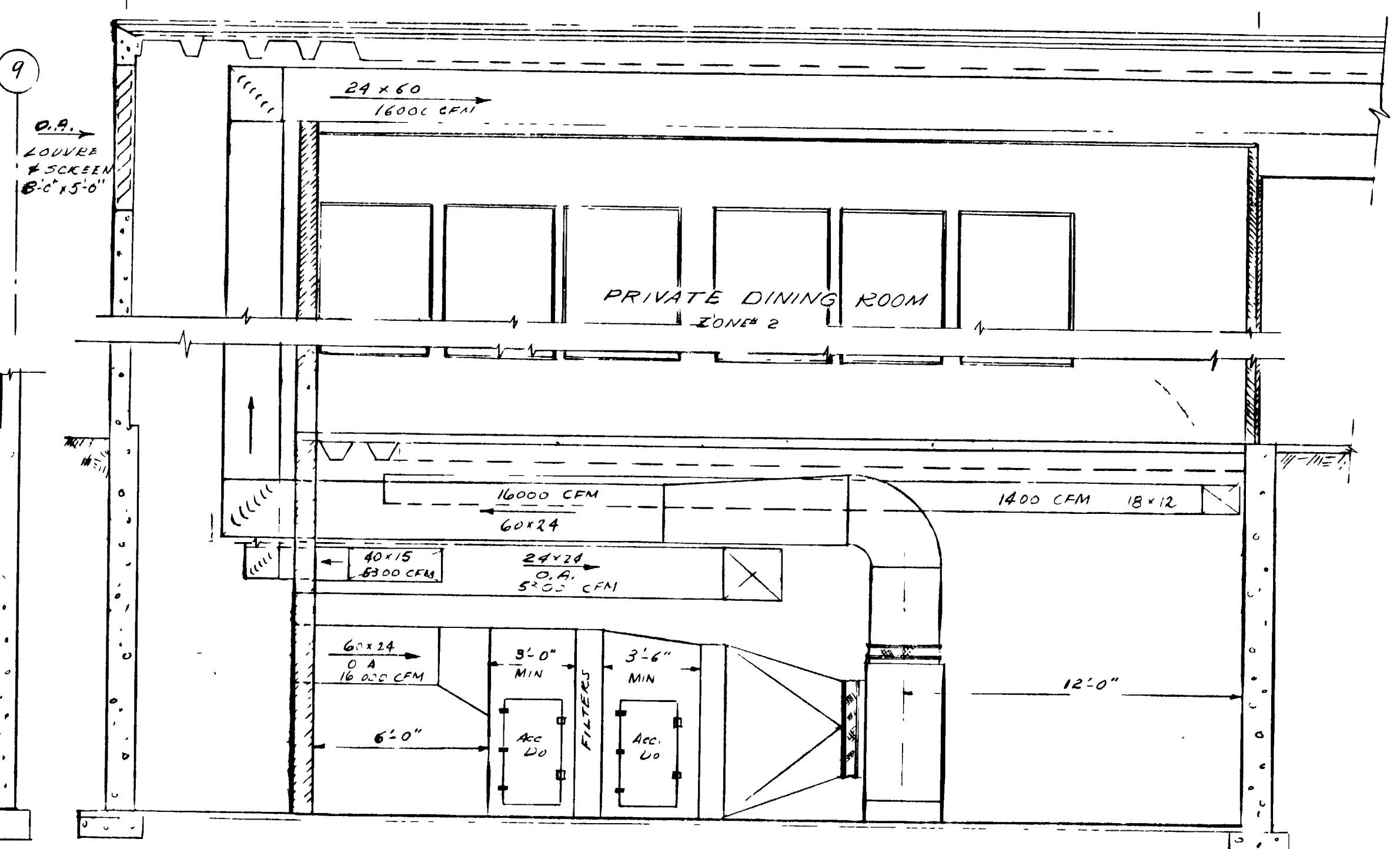
TRAP COIL #	BTU/HR	AVG TEMP LEAV	FACE AREA	FACE VEL	TEMP LENGTH	# COND. HR	TRAP SIZE	TRAP IN	TRAP OUT	PRESSURE	SERVICE	ORIFICE DIAMETER	TRAP PRESS DIFF. RATING
1	610000	0	70	15.3	550	72-24	632	1/2"	71-D	5 PSI	MAKE-UP AIR FOR RANGE HOOD	1 7/8"	5
2	610000	0	70	15.3	550	72-24	632	1/2"	71-D	5 PSI	MAKE-UP AIR FOR RANGE HOOD	1 7/8"	5
3	97000	35	97	2.8	520	24-12	1015	1/2"	60	5 PSI	HEATING COIL FOR ZONE #2	9/16"	30
4	320,000	35	82	15.3	410	72-24	314	1/2"	71-D	5 PSI	HEATING COIL FOR ZONE #1	1 7/8"	5
5	320000	35	82	15.3	410	72-24	314	1/2"	71-D	5 PSI	" " " "	1 7/8"	5
6	38500	50	105	174	575	30-6	62	1/2"	60	5 PSI	REHEAT COIL FOR ZONE #3	9/16"	30
7	48000	50	122	93	530	24-4	41	1/2"	60	5 PSI	REHEAT COIL FOR ZONE #4	9/16"	30
8	180,000	50	94	7.3	530	48-18	190	1/2"	60	5 PSI	REHEAT COIL FOR ZONE #5	9/16"	30
9	286,000	0	350				298	1/2"	71-D	5 PSI	TEMP AIR FOR ZONES #3,4,5	9/16"	5
10	2,800						10	1/2"	60	5 PSI	STEAM TRAP	9/16"	30
11	4000						417	1/2"	71-L	5 PSI	WATER HEATER	1 7/8"	5

- NOTES:
- COIL NO. 7 TO BE FURNISHED WITH UNIT HEATER (NON FREEZE TYPE)
 - FILTER BANK #1 WASHABLE TYPE - 45" D - 0.12" H.O. MAX S.P. DROP - 16,000 CFM WITH MAX FACE VELOCITY OF 500 FPM
 - SPRAY COIL UNIT UNIT TO CONSIST OF COOLING COILS, ELIMINATORS, SPRAY HEADS, PUMP & NOZZLES TWO (2) 8" ROW. TOTAL FACE AREA 27.5' 2" SEN. LOAD 332,000 BTU/HR LAT. LOAD 485,000 BTU/HR WITH AIRFLOW - 73 MB E B I DA SUPP. AIR TEMP 8 152 GPM AT 45° F SUP. WATER TEMP. PRESSURE DROP NOT TO EXCEED 7 PSI SPRAY PUMP - 230 GPM - 20.1' HEAD - 1/2" HP UNIT CHARGED COIL - 29x73 UNIT WITH TWO (2) 39x7 - 6 ROW COILS OR APPROVED EQUAL
 - FILTER BANK #2 WASHABLE TYPE - 36" D - 0.12" H.O. MAX S.P. DROP - 14,000 CFM WITH MAX FACE VELOCITY OF 500 FPM
 - TRAPS ALL TRAPS SHALL BE CLARK MFG CO TRAPS OF THE SIZE AND TYPE NOTED ABOVE OR APPROVED EQUAL ALL TRAPS FURNISHED SHALL BE SIZED FOR THREE THE RATE OF CONDENSATE LISTED ABOVE

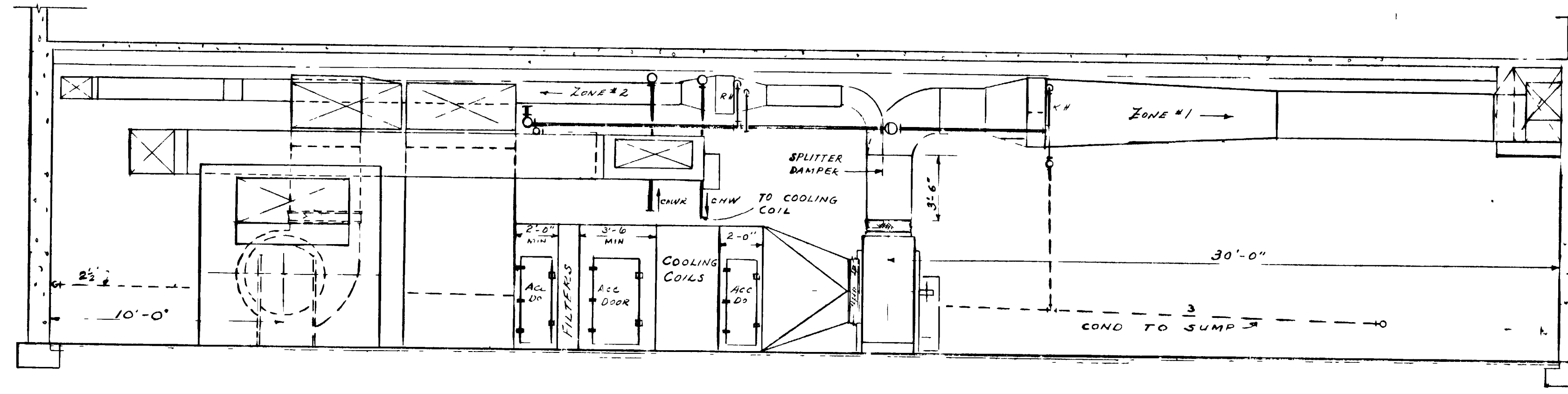
NOTE
ALL AIR DUCTS SHALL BE INSULATED IN BASEMENT AND AIRSHAF
ALL FAN DISCHARGE SHALL BE CONNECTED TO DUCT WORK THRU
CANVAS CONNECTIONS
SEE SH B2-9-M FOR COIL PIPING DETAIL

HANGERS SHALL BE PROVIDED TO SUPPORT
PIPE 2 1/2" OR LESS AT NOT MORE THAN EIGHT
FOOT DISTANCES. PIPE 3" OR GREATER SHALL
HAVE HANGERS SPACED NOT OVER 12 FEET.

BASEMENT - PLAN
SCALE 1/4" = 1'-0"



SECTION 'AA' - ELEVATION
SCALE 1/4" = 1'-0"



SECTION 'BB' - ELEVATION
SCALE 1/4" = 1'-0"

CLASSIFICATION CHANGED TO **Unclassified**

By Authority of **DOE/LSO 07/17**

By **WJ/SM** Date **2/1/96**

Verified by **Jana Miller 2/3/97**

Signature of Person Verifying Change: **Jana Miller**

Mark: **Mark: PDP**

REVIEWED FOR
CLASSIFICATION
SM 06/05/2014
Initials Date
UNCLASSIFIED

REV. NO.	DATE	ISSUED FOR	BY	APP. DATE
5	11/16/53	AS BUILT		60/11/16/53
4	5/5/52	REVISION REQUEST # 508		
3	12/5/51	REVISE PLAN, STA. KEY LEG. # 101		12/18/51
2	11/8/51	CONSTRUCTION # 13		
1	11/8/51	APPROVAL # 18		

UNITED STATES
ATOMIC ENERGY COMMISSION

SMITH, HINCHMAN & GRYLLS, INC.
ARCHITECTS & ENGINEERS
DETROIT 26, MICHIGAN

DRAWING TITLE
AIR CONDITIONING - BASEMENT

DRAWING APPROVED - DATE	DRAWN APPROVED - DATE	DRAWING APPROVED - DATE
<i>J. H. Walker</i>	<i>E. M. Walker</i>	<i>E. M. Walker</i>
10-10-54	10-10-54	10-18-54
ARCHITECT ENGINEER	ARCHITECT ENGINEER	C. E. C. ENGINEER
DATE	DATE	DATE
10-10-54	10-10-54	10-18-54
DRAWN	DATE	DATE
<i>J. H. Walker</i>	10-10-54	10-18-54
PROJECT	BUILDING	WALLS
CAFETERIA	C-101	B2-7-M

8768

Unclassified

UNCLASSIFIED

UNCLASSIFIED

MICROFILMED