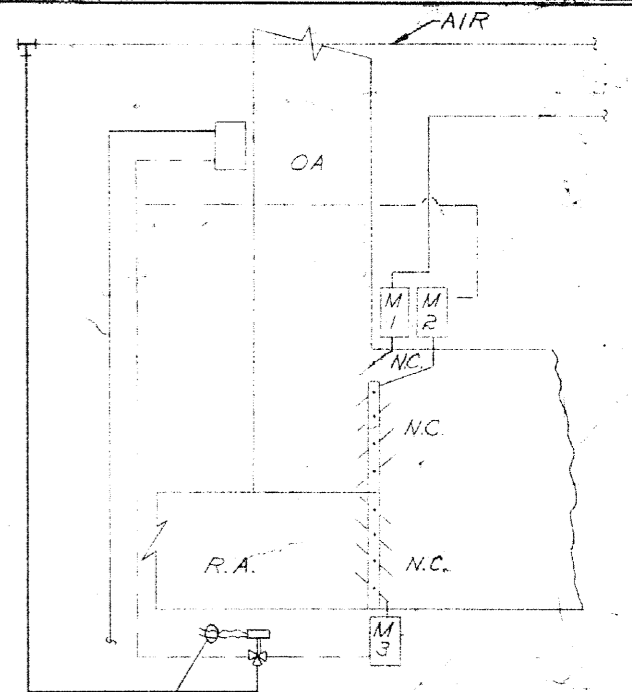
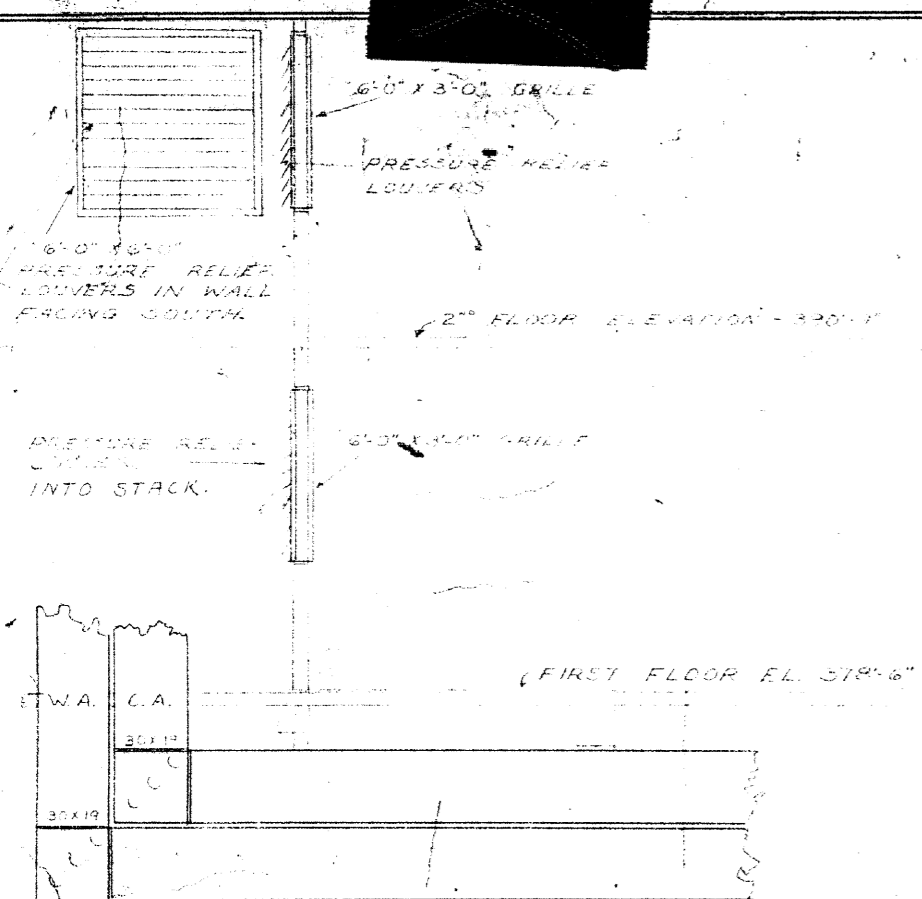


Unclassified

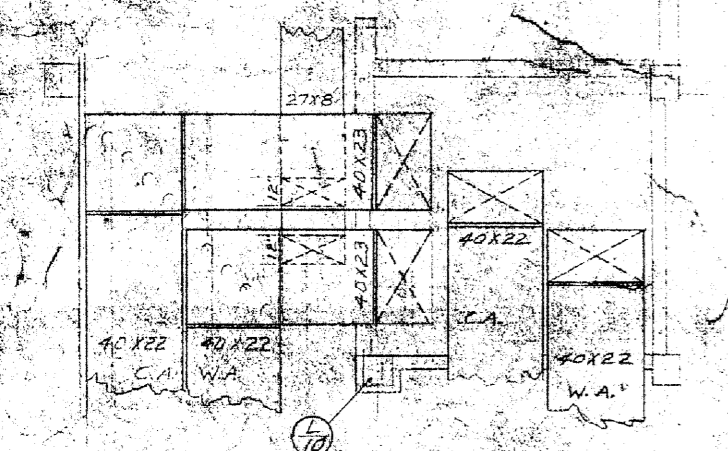
VAULT



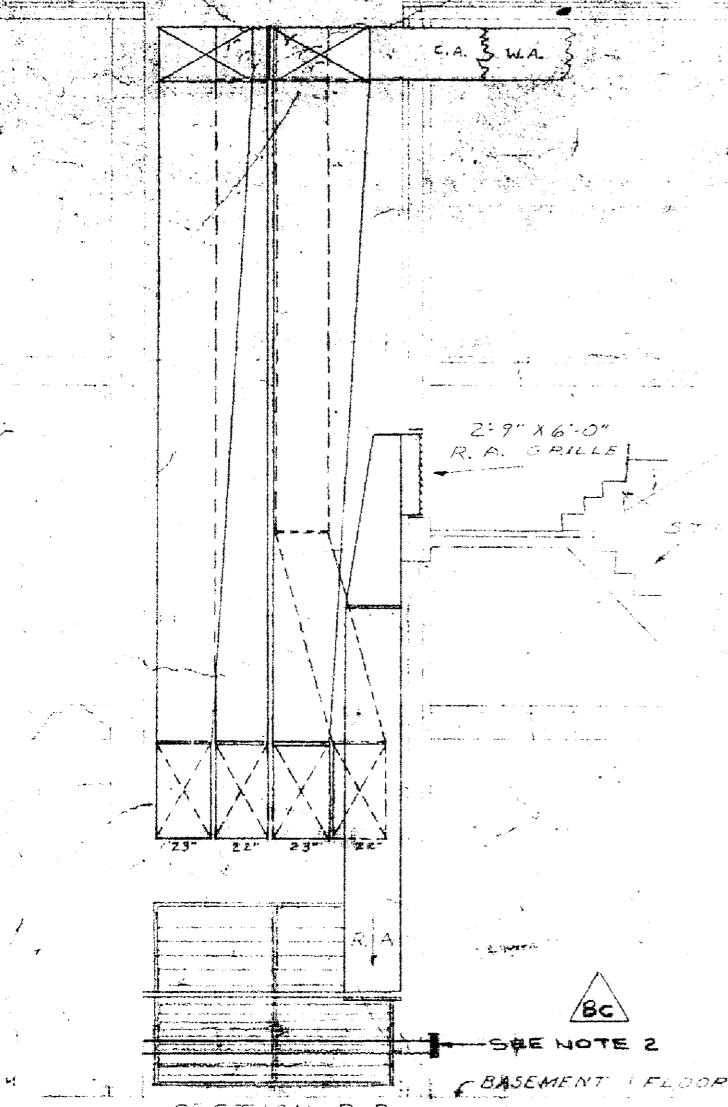
REVISED CONTROL SCHEMATIC SCALE: NONE



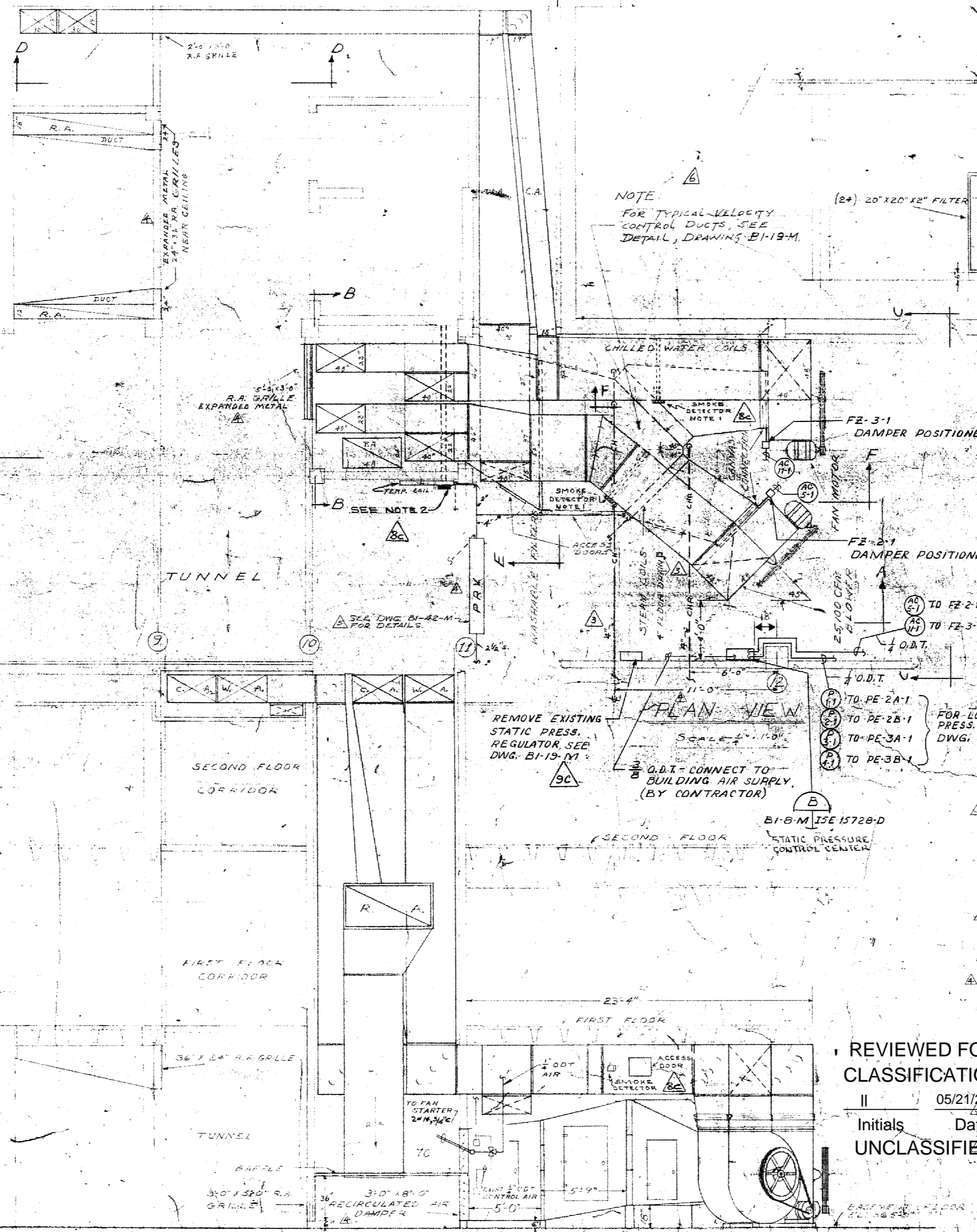
SECTION - D-D SCALE: 1/4"=1'-0"



SECOND FLOOR CEILING PLAN SCALE: 1/4"=1'-0"



SECTION - B-B



NOTE FOR TYPICAL VELOCITY CONTROL DUCTS, SEE DETAIL, DRAWING B1-19-M

REMOVE EXISTING STATIC PRESS. REGULATOR SEE DWG. B1-19-M FOR DETAILS

Q.D.T. CONNECT TO BUILDING AIR SUPPLY (BY CONTRACTOR)

BI-8-M ISE 15728-D STATIC PRESSURE CONTROL CENTER

EQUIPMENT SCHEDULE

- 1-BUFFALO-POSS, TYPE "LL" 8" BLWERS, SIZE T, OR APPROVED. EQUAL 25,100 CFM @ 1/2" W.G. 10 HP S.C. MOTOR, 208/3/60 WITH AUTOMATICALLY OPERATED INLET VALVES.
3-TRANE WATER COILS, CLEANABLE TUBES, TYPE "R" WITH REMOVABLE HEATER-COILS 30" X 1' COIL 24" FACE WIDTH X 7' TUBE LENGTH X 5" PUMP - DESIGN OR APPROVED EQUAL. BASED ON 47°F WATER IN AT RATE OF 1.4 GPM PER TON SEE 100' GIVING TOTAL SENSIBLE HEAT GAIN. 0.9X100 BTU/H TOTAL HEAT GAIN; 3075 CFM OUTSIDE AIR.
3-TRANE STRAIN COILS, NON-FREEZE TYPE FOR OR APPROVED EQUAL SIZE 24" FACE WIDTH X 60" TUBE LENGTH X 2" RADII DEEP SERIES ON 3 PSI SATURATED STEAM IN 45°F E.A. 120°F @ 700 FPM
24-FAN/PAID FILTERS SIZE 20"X30"X1" OR APPROVED EQUAL IN PLAT HANG.
2-DAMPERS, I.A.R.A. LOWEST MINIMUM R.A. DAMPER ARRANG. 12" X ALL SHEETMETAL DUCTWORK AND BLOWER CASINGS TO BE INSULATED THOSE SECTIONS WITHIN 6'-0" OF THE FLOOR ARE TO HAVE A CEMENT FINISH.

REVIEWED FOR CLASSIFICATION REFERENCE 05/21/2014

INITIALS DATE UNCLASSIFIED

LEGEND

DRAWING RETRIEVAL table with columns for DISC, CP, IE, EE, MD, CA, CODED.

Revision table with columns for REV, DEPT, SECT, RE, OPER, FIRE, SAFETY, DWG, REVISION APPROVALS.

UNITED STATES ATOMIC ENERGY COMMISSION table with columns for DRAWING APPROVED DATE, DRAWING APPROVED DATE, DRAWING APPROVED DATE.

NOTES 1-SMOKE DETECTOR SHALL BE INSTALLED IN CENTER OF DUCTS APPROXIMATELY TWO FOOT DIAMETERS DOWN STREAM FROM NEAREST SEND ACCESS DOORS (APPROX. 24" X 24") SHALL BE INSTALLED TO DETECTORS TO FACILITATE INSTALLATION AND MAINTENANCE. FOR DETAILS, SEE DWG. B1-19-M.
2-RETURN AIR SMOKE DETECTOR SHALL BE INSTALLED IN THE CENTER OF DUCTS APPROXIMATELY TWO FOOT DIAMETERS DOWN STREAM FROM NEAREST SEND ACCESS DOORS (APPROX. 24" X 24") SHALL BE INSTALLED TO DETECTORS TO FACILITATE INSTALLATION AND MAINTENANCE. FOR DETAILS, SEE DWG. B1-19-M.

BT Images, Inc. 00000001

SMITH, MINCHMAN & GRYLLS, INC. ARCHITECTS & ENGINEERS DETROIT 24, MICHIGAN AIR CONDITIONING LAYOUT CENTRAL EQUIPMENT ROOM DRAWING TITLE

Unclassified