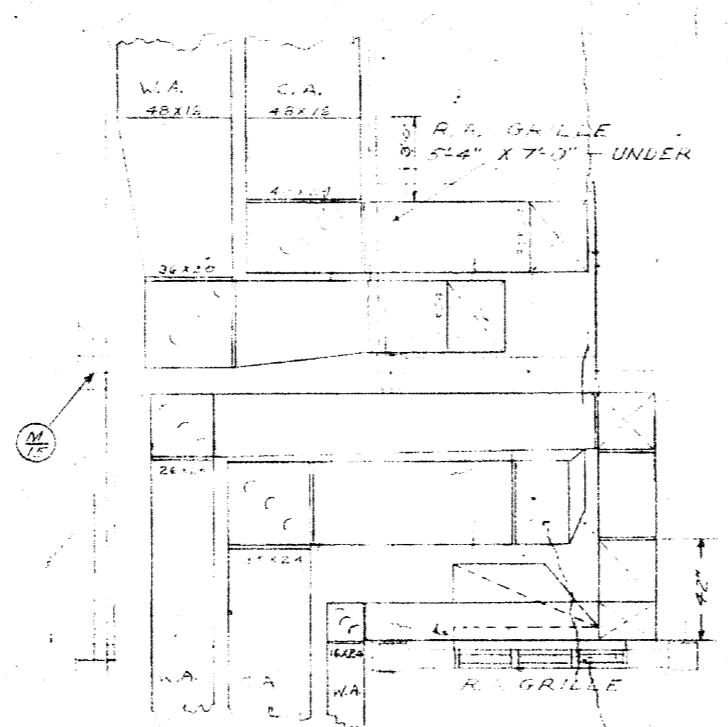
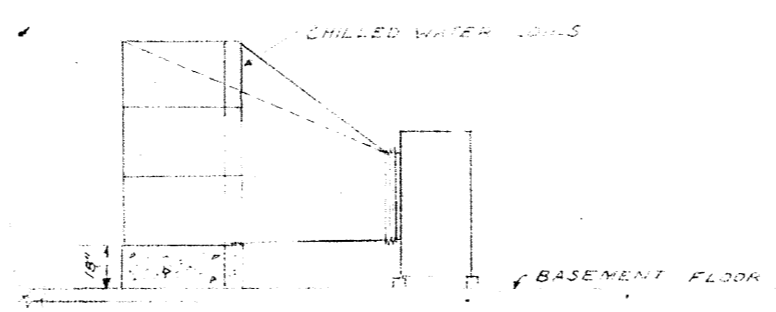


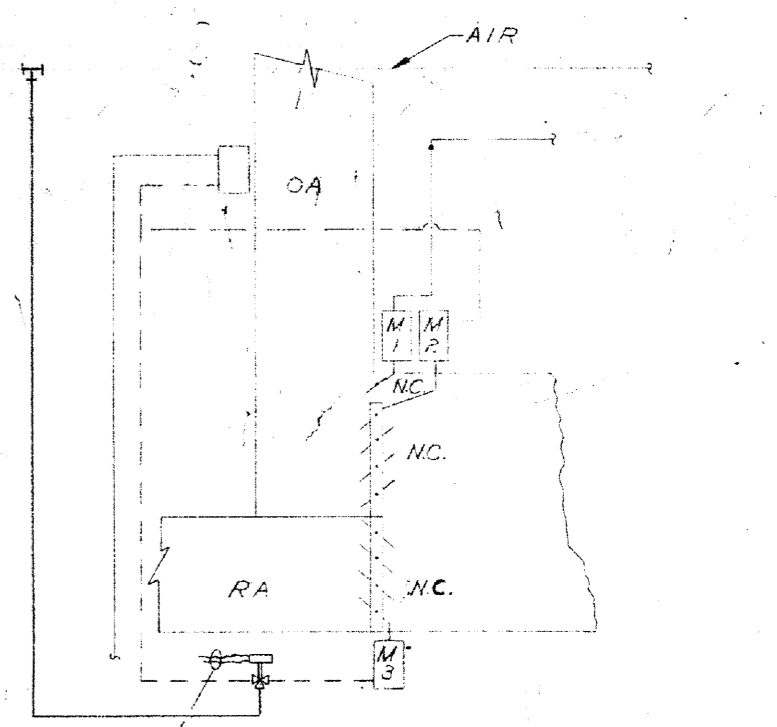
Unclassified
Unclassified



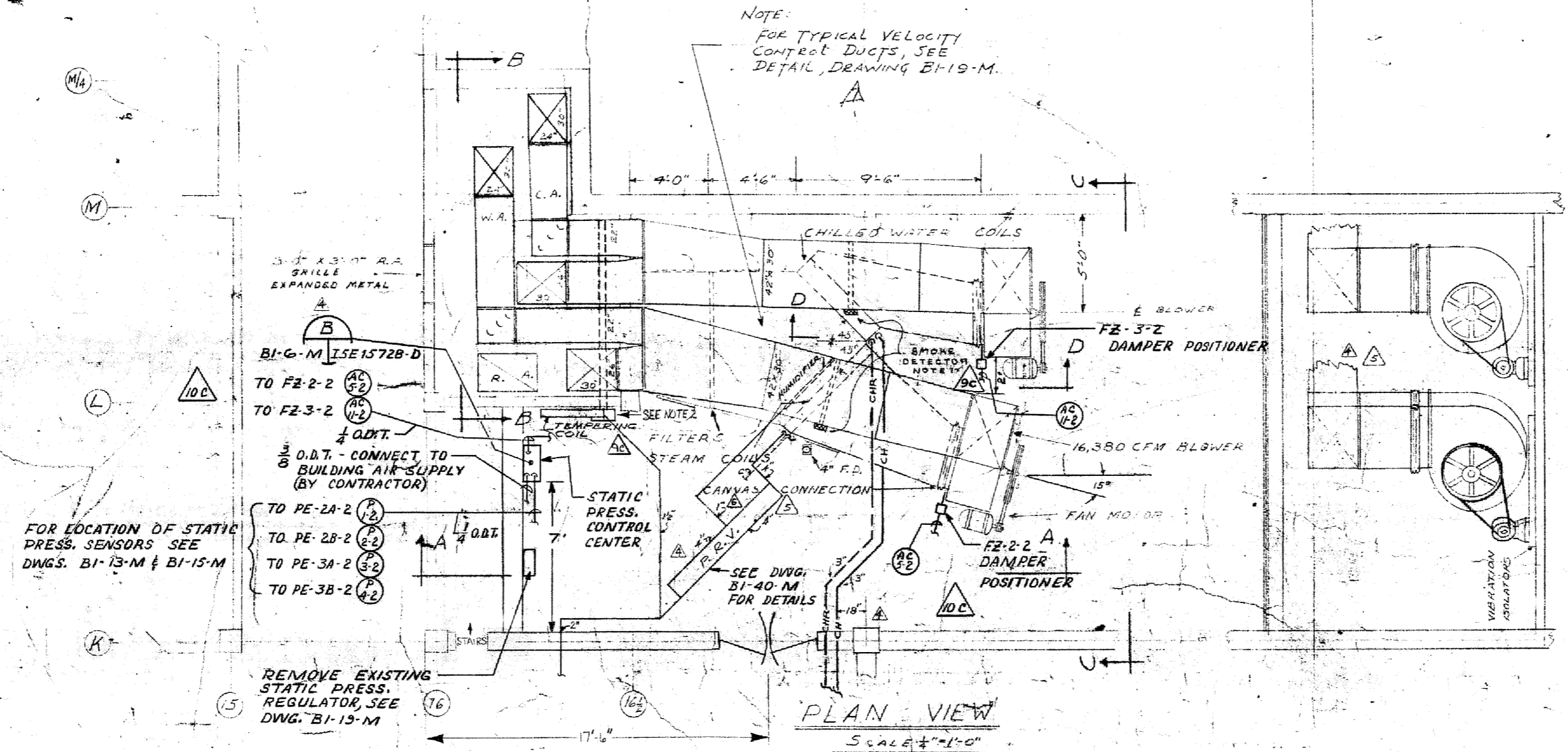
FIRST FLOOR CEILING PLAN
SCALE 1/4" = 1'-0"



SECTION-D-D
SCALE 1/4" = 1'-0"

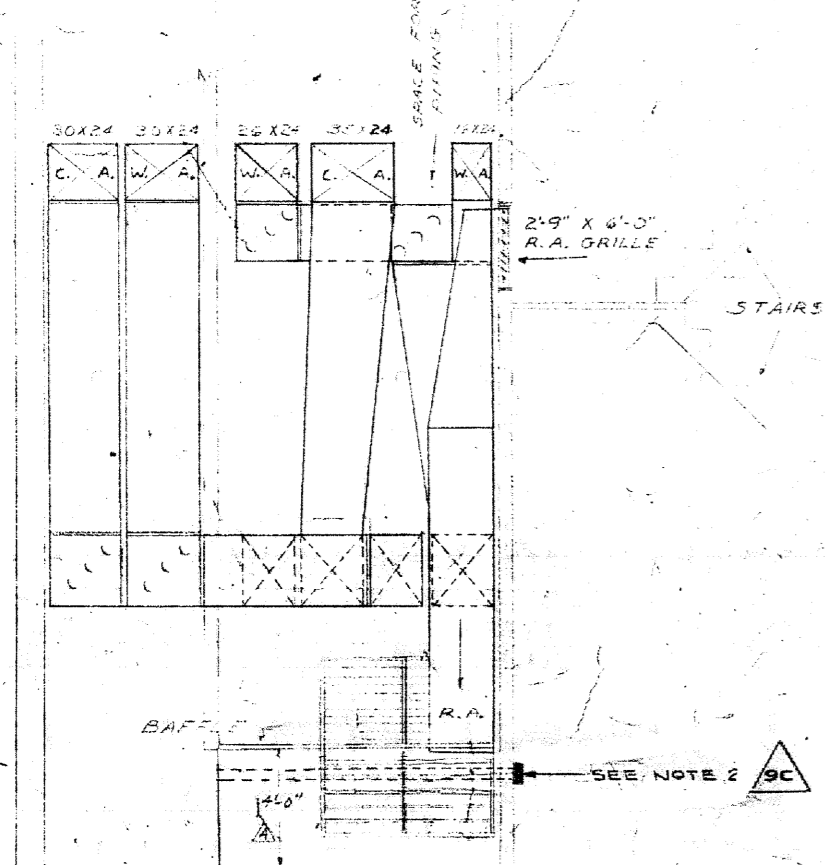


REVISED CONTROL SCHEMATIC
SCALE NONE

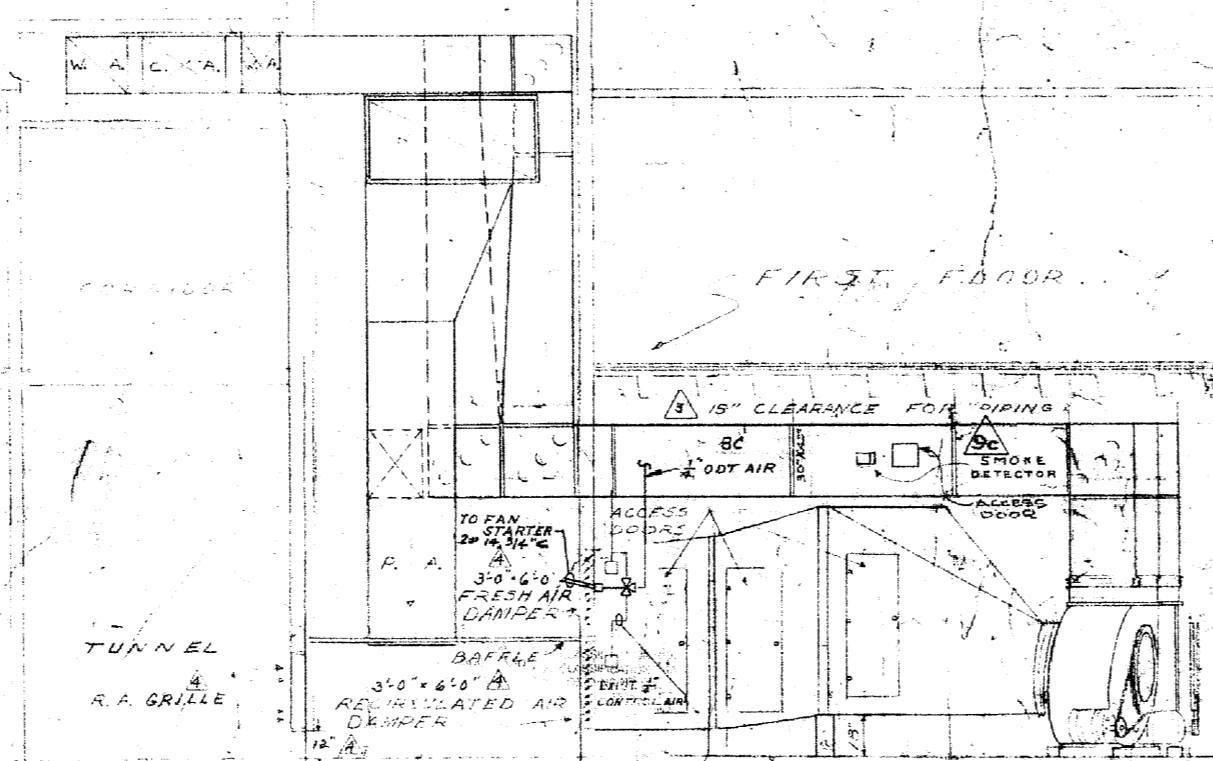


PLAN VIEW
SCALE 1/4" = 1'-0"

SECTION-C-C
SCALE 1/4" = 1'-0"



SECTION B-B
SCALE 1/4" = 1'-0"



SECTION A-A
SCALE 1/4" = 1'-0"

NOTE:
FOR TYPICAL VELOCITY
CONTROL DUCTS, SEE
DETAIL DRAWING B1-19-M.

FOR LOCATION OF STATIC
PRESS. SENSORS SEE
DWGS. B1-13-M & B1-15-M

REMOVE EXISTING
STATIC PRESS.
REGULATOR SEE
DWG. B1-15-M

- NOTES**
- SMOKE DETECTORS SHALL BE MTD IN CENTER OF DUCT APPROX. TWO DUCT WIDTHS DOWN STREAM FROM NEAREST BEND. ACCESS DOORS (APPROX. 24" X 18") SHALL BE MTD. NEAR DETECTOR & FACILITATE DETECTOR INSTALLATION AND MAINTENANCE. FOR DETAIL, SEE DWG. B1-12-24-C.
 - RETURN AIR SMOKE DETECTOR SHALL BE MTD. IN CENTER OF AIR DAMPER IN ACCORDANCE WITH THE MANUFACTURER'S RECOMMENDATIONS. SEE MOUNTING PLANS ON DWG. B1-12-24-C.

DEPARTMENT OF ENERGY DECLASSIFICATION REVIEW

157 REVIEWS	CLASSIFIED
AMOUNT OF INFO	CLASSIFIED
NO REVIEWER	CLASSIFIED
157 REVIEWS	CLASSIFIED

BT Images, Inc.
0000599

DRAWING RETRIEVAL

DISC	CP	TE	EE	MD	CA
CODED					

EQUIPMENT SCHEDULE

- 12-BUFFALO FORCE TYPE 11 5/8" BLOWER, SIZE 2 OR APPROVED EQUAL, 16,380 CFM @ 1/2" SP. 7 1/2" SC. MOTOR, 208/3160, WITH AUTOMATICALLY OPERATED START WINDS.
- 3-TRANE WATER COILS, CLEARANCE TYPE, TYPE R, WITH RECYCLED HEADERS, 3/4" IN. DIA. TUBES, 1/2" DIA. TUBES, LENGTH X 4 ROWS DEEP OR APPROVED EQUAL, BASED ON 47°F WATER IN & 70°F WATER OUT, 354,500 BTU/H. TOTAL SENSIBLE HEAT GAIN, 442,000 BTU/H. TOTAL HEAT GAIN, 1054 CFM OUTSIDE AIR.
- 3-TRANE STEEL COILS, NON-FREON, TYPE RD, OR APPROVED EQUAL, 3/4" IN. DIA. TUBES, 1/2" DIA. TUBES, LENGTH X 1 ROW DEEP, SERIES X, 575,000 BTU/H. IN. 50°F LA-1087 @ 500 RPM.
- 16-FAN AIR FILTERS - SIZE 20" X 20" X 5", OR APPROVED EQUAL.
- 3-DAMPERS, FRESH AIR & RECIRCULATED AIR, LEVERED.
- 1-MINIMUM F.A. SIZE APPROX. 12% OF TOTAL F.A. ALL SPACT METAL DUCTWORK AND BLOWER CASINGS TO BE INSULATED, THOSE SECTIONS WITHIN 6'-0" OF THE FLOOR ARE TO HAVE A CEILING FINISH.

REVIEWED FOR
CLASSIFICATION
05/21/2014
Initials Date
UNCLASSIFIED

REFERENCE

- B1-13-M CHILLED WATER PIPING ISOMETRICS
- B1-14-M STEAM CONNECTION ISOMETRICS
- B1-15-M PRESSURE REDUCING STATIONS
- B1-16-M PIPING LAYOUT
- B1-20-M STEAM PIPING DETAILS

LEGEND

- W.A. WALKER AIR
- R.A. RECIRCULATED AIR

10C	EE	IE	MD	MA	QE
REV	DEPT	SECT	PE	OPER	FIRE SAFETY DIV.
6/19/05	QAB	10C	6-23-83	CFC FOR ESO-15728	FPSC B118

REV. NO.	DATE	DESCRIPTION	BY	APP. DATE
9C	10/22/07	SMOKE DETECTOR	AS BUILT	
8C	12-22-08	SMOKE DETECTOR ALARM NO. 412624	WAS	12/23/08
7	1/16/09	AS BUILT - DAY EQ. #1075-M1	GDH	1/16/09
6	4-24-02	REVISION REQUEST NO. 582	WV	
5	3-20-04	REVISION REQUEST NO. 458	DR	
4	12/6/05	REVISION REQUEST NO. 1018-10A	WV	
3	11/7/05	REVISION REQUEST NO. 13 - CLEARANCE FOR PIPE	WV	
2	10/31/05	CONSTRUCTION	WV	10/31/05
1	1/14/05	APPROVAL	A.C.	

UNITED STATES
ATOMIC ENERGY COMMISSION

SMITH, HINCHMAN & GRYLLS, INC.
ARCHITECTS & ENGINEERS
DETROIT 26, MICHIGAN

**AIR CONDITIONING LAYOUT
SOUTHEAST EQUIPMENT ROOM**

DRAWING APPROVED - DATE: 10/23/07 BY: R.A. WALKER
DRAWING APPROVED - DATE: 10/20/07 BY: R.J. BROWN
CONTRACT NUMBER: 10-20-07
DATE: 10/20/07
BY: R.A. WALKER
BY: R.J. BROWN
BY: R.A. WALKER
BY: R.J. BROWN

8786

ADMINISTRATION
B1-6-M

UNCLASSIFIED