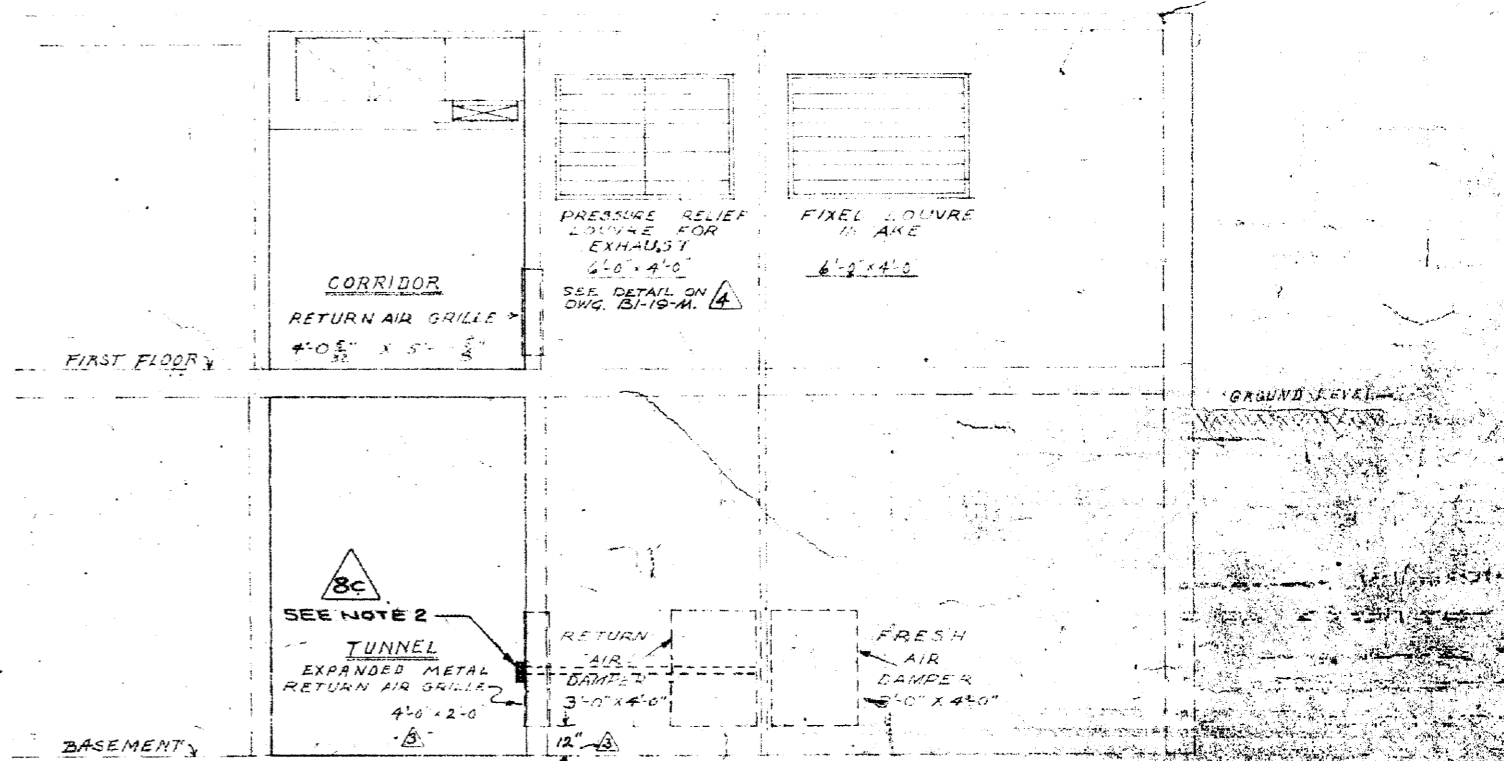
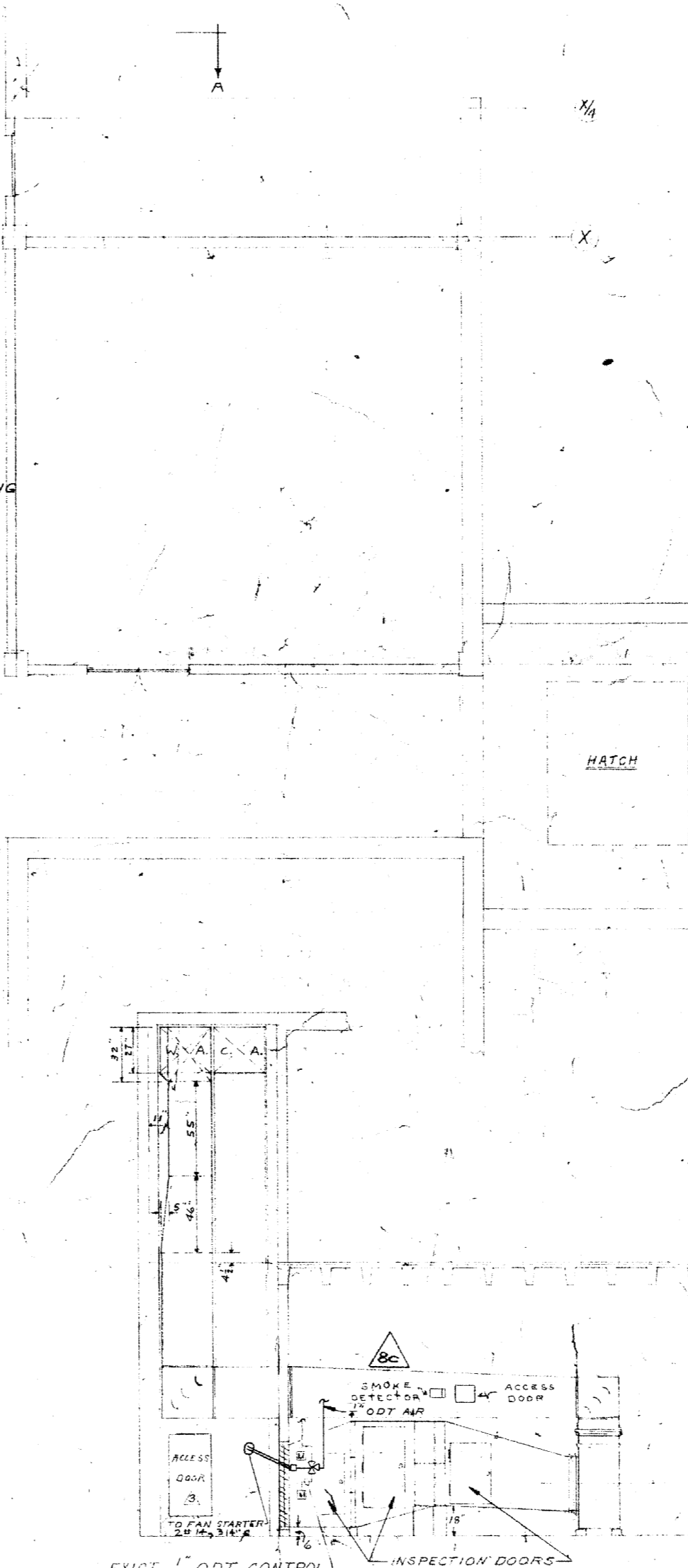
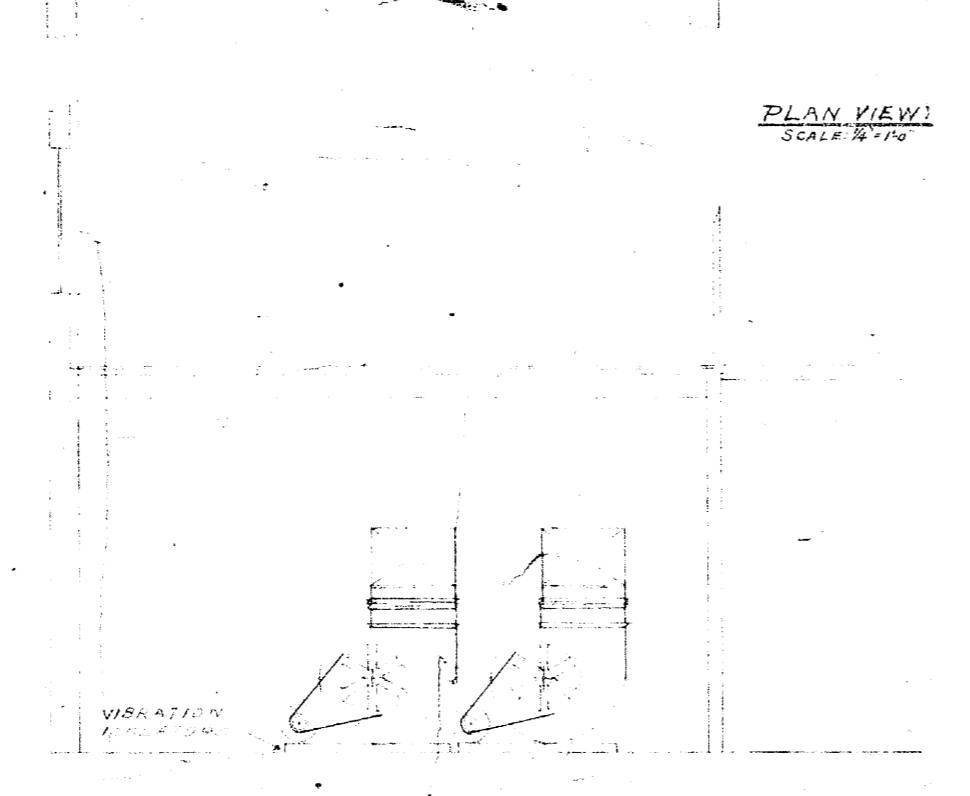
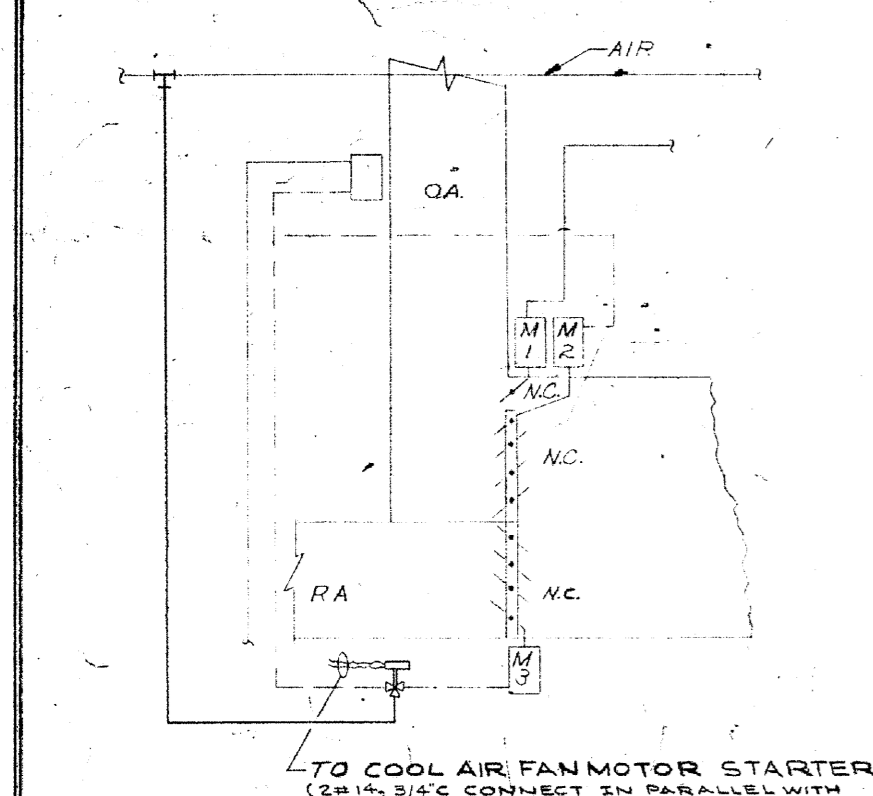
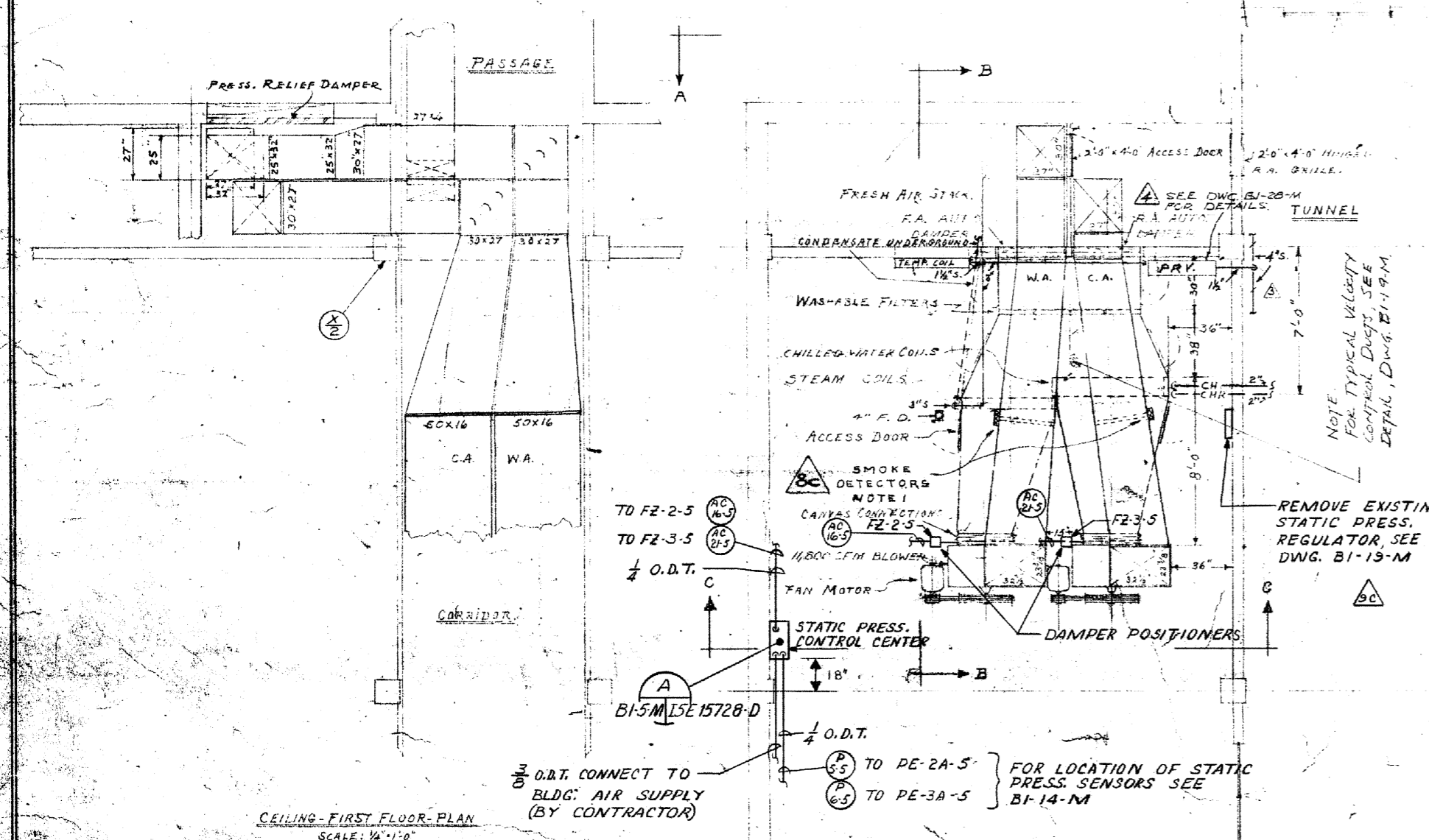


Unclassified
Unclassified

NOTES

- SMOKE DETECTORS SHALL BE MTD. IN CENTER OF DUCT APPROX. TWO DUCT WIDTHS DOWN STREAM FROM NEAREST BEND. ACCESS DOORS (APPROX. 24" X 16") SHALL BE MTD. NEAR DETECTORS TO FACILITATE DETECTOR INSTALLATION AND MAINTENANCE. FOR DETAIL SEE DWG. E-E-12624-C.
- RETURN AIR SMOKE DETECTOR SHALL BE MTD. IN CENTER OF AIR DAMPER IN ACCORDANCE WITH THE MANUFACTURER'S RECOMMENDATIONS. SEE MOUNTING PLAN ON DWG. E-E-12624-C.



EQUIPMENT SCHEDULE

- BUFFALO-PURGE TYPE LC 515 W 4.0 ON P.L. SIZE 24" X 4" APPROX. EQUAL. 1/800 CFM @ 18" S.C. E S/D S.C. MOTOR 208-230V WITH AUTOMATICALLY OPERATED INLET VANES.
- TRANE WATER COILS, CLEANABLE TUBES TYPE WITH REMOVABLE HEADERS, SIZE 24" FACE WIDTH X 60" TUBE LENGTH X 4" ROWS DEEP, OR APPROVED EQUAL. BASED ON 47°F WATER IN AT RATE OF 2.0 GPM/TON. 241280 BTU/HR TOTAL SENSIBLE HEAT GAIN, 278,500 BTU/HR TOTAL HEAT GAIN, 740 CFM RE-CIRCULATED AIR.
- TRANE STEAM HEATING COILS, TYPE 100, APPROX. EQUAL. OR APPROVED EQUAL. SIZE 24" FACE WIDTH X 48" TUBE LENGTH X 4" ROWS DEEP. 241280 BTU/HR TOTAL SENSIBLE HEAT GAIN, 278,500 BTU/HR TOTAL HEAT GAIN, 740 CFM RE-CIRCULATED AIR.
- FAN AIR FILTERS - SIZE 20" X 20" X 1", OR APPROVED EQUAL IN FLAT BANK.
- DAMPERS, FRESH AIR & RE-CIRCULATED AIR, APPROX. 6" X 6" MINIMUM F.R. DAMPER, APPROX. 6" X 6" TOTAL F.R.

ALL SHEET METAL DUCTWORK AND EQUIPMENT CASINGS TO BE INSULATED, THICKNESS TO BE WITHIN 6" OF THE FLOOR AND TO BE FINISHED WITH A CEMENT FINISH.

REVIEWED FOR CLASSIFICATION
RLH 05/21/2014
Initials Date
UNCLASSIFIED

DRAWING RETRIEVAL

DISC	CP	IE	EE	MD	CA

LEGEND

- W.A. WARM AIR
- C.A. COOL AIR
- R.A. RE-CIRCULATED AIR

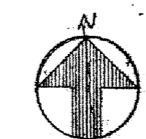
REFERENCE

- BI-15-M FRESH AIR INTAKE
- BI-17-M CONDENSATE HANDLING
- BI-18-M CHILLED WATER COILS
- BI-19-M STEAM COILS
- BI-20-M PRESSURE RELIEF STATIONS
- BI-21-M DAMPER LAYOUT

REV	DATE	BY	DESCRIPTION
1	05/21/14	RLH	ISSUED FOR CONSTRUCTION

Unclassified

9c	BT Images, Inc.	0000508
----	-----------------	---------



REV	DATE	BY	DESCRIPTION
9c	05/21/14	RLH	ISSUED FOR CONSTRUCTION

UNITED STATES ATOMIC ENERGY COMMISSION
SMITH HINCHMAN & GRYLLS, INC. ARCHITECTS & ENGINEERS DETROIT, MICHIGAN
AIR CONDITIONING LAYOUT NORTHWEST EQUIPMENT ROOM

Unclassified

UNCLASSIFIED

876B