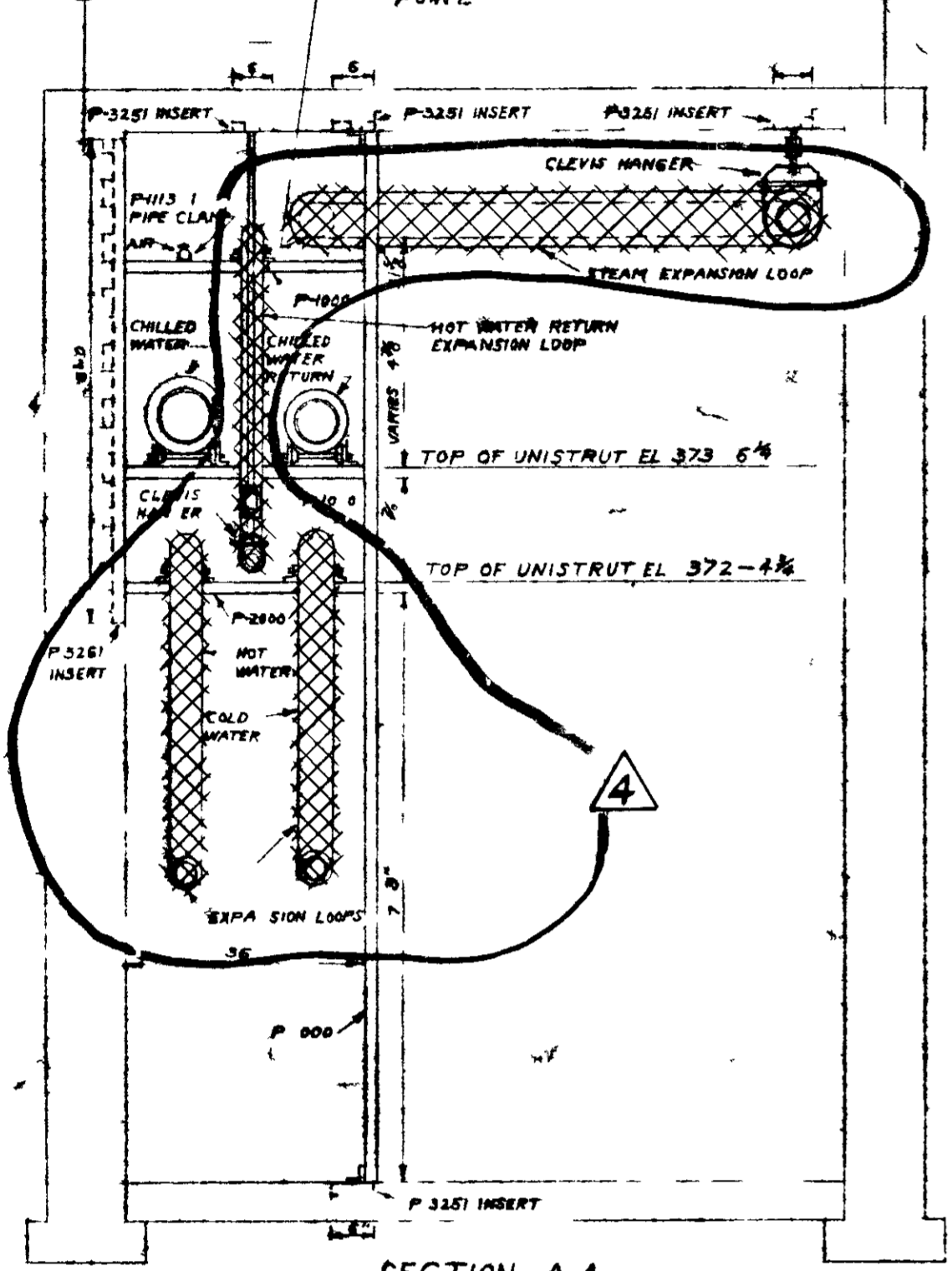


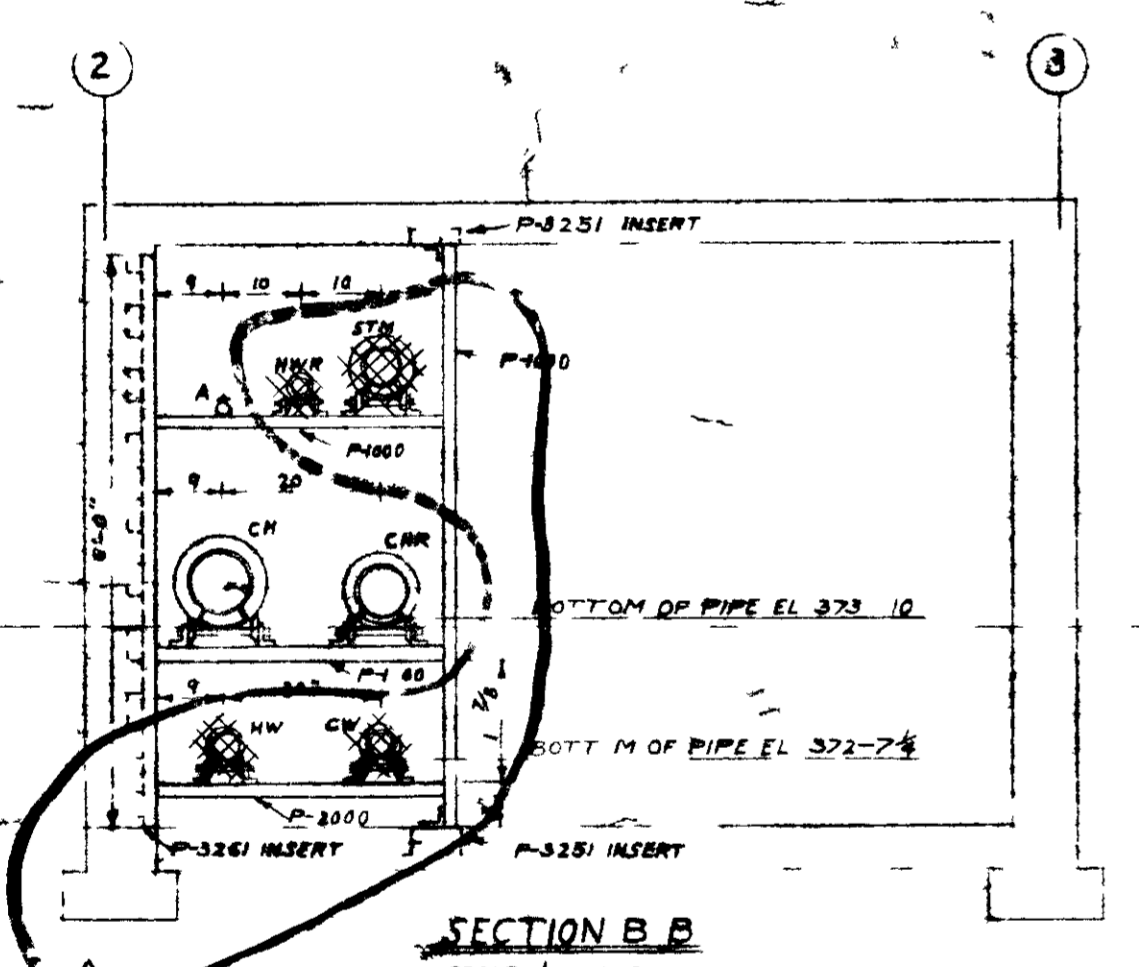
UNCLASSIFIED

Unclassified

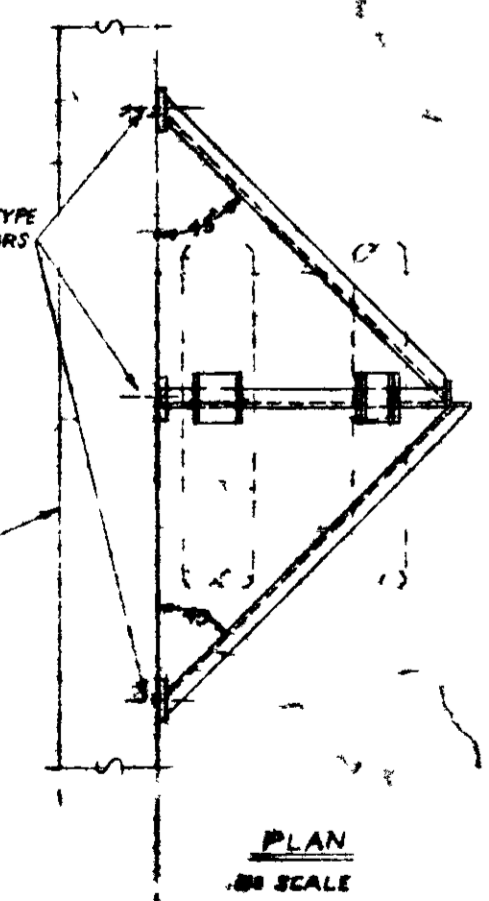
NOTE: A TYPICAL PIPE ON STEAM MAIN VARIES FROM EL 375'-7 1/2" @ LOW POINT TO EL 376'-1 1/2" @ HIGH POINT.



SECTION A-A SCALE 1/2" = 1'-0"



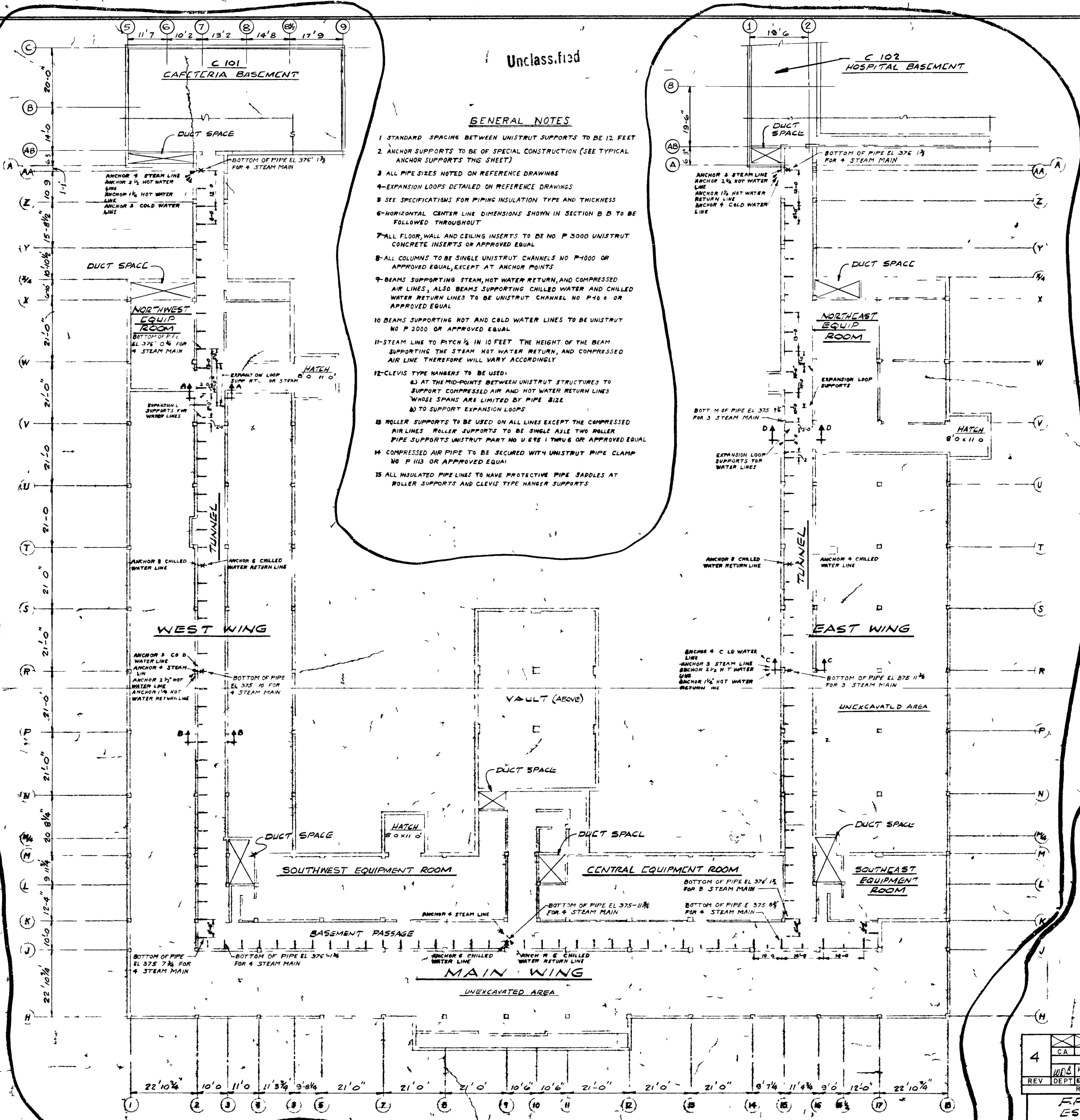
SECTION B-B SCALE 1/2" = 1'-0"



ANCHOR NOTES

- 1 ANCHOR SUPPORTING STRUCTURES TO BE FABRICATED IN FIELD OF 2'-0" x 2'-0" ANGLES WELDED
- 2 ANCHOR BEAMS ONLY TO BE BRACED HORIZONTALLY
- 3 CLEVIS TYPE ANCHORS TO BE USED TO BRACE ANCHOR STRUCTURES TO FLOOR, WALL, AND CEILING
- 4 ANCHORS TO CONSIST OF CHANNELS WELDED TO PIPE AND SUPPORTING BEAMS. CHANNEL LENGTHS AND SIZES TO SUIT IN FIELD

TYPICAL ANCHOR SUPPORTS



GENERAL NOTES

- 1 STANDARD SPACING BETWEEN UNISTRUT SUPPORTS TO BE 12 FEET
- 2 ANCHOR SUPPORTS TO BE OF SPECIAL CONSTRUCTION (SEE TYPICAL ANCHOR SUPPORTS THIS SHEET)
- 3 ALL PIPE SIZES NOTED ON REFERENCE DRAWINGS
- 4 EXPANSION LOOPS DETAILED ON REFERENCE DRAWINGS
- 5 SEE SPECIFICATIONS FOR PIPING INSULATION TYPE AND THICKNESS
- 6 HORIZONTAL CENTER LINE DIMENSIONS SHOWN IN SECTION B-B TO BE FOLLOWED THROUGHOUT
- 7 ALL FLOOR, WALL AND CEILING INSERTS TO BE NO. P-3000 UNISTRUT CONCRETE INSERTS OR APPROVED EQUAL
- 8 ALL COLUMNS TO BE SINGLE UNISTRUT CHANNELS NO. P-4000 OR APPROVED EQUAL, EXCEPT AT ANCHOR POINTS
- 9 BEAMS SUPPORTING STEAM, HOT WATER RETURN, AND COMPRESSED AIR LINES, ALSO BEAMS SUPPORTING CHILLED WATER AND CHILLED WATER RETURN LINES TO BE UNISTRUT CHANNEL NO. P-4000 OR APPROVED EQUAL
- 10 BEAMS SUPPORTING HOT AND COLD WATER LINES TO BE UNISTRUT NO. P-2000 OR APPROVED EQUAL
- 11 STEAM LINE TO PITCH 1/4" IN 10 FEET. THE HEIGHT OF THE BEAM SUPPORTING THE STEAM, HOT WATER RETURN, AND COMPRESSED AIR LINE THEREFORE WILL VARY ACCORDINGLY
- 12 CLEVIS TYPE NUMBERS TO BE USED:
 - a) AT THE MID-POINTS BETWEEN UNISTRUT STRUCTURES TO SUPPORT COMPRESSED AIR AND HOT WATER RETURN LINES WHOSE SPANS ARE LIMITED BY PIPE SIZE
 - b) TO SUPPORT EXPANSION LOOPS
- 13 ROLLER SUPPORTS TO BE USED ON ALL LINES EXCEPT THE COMPRESSED AIR LINES. ROLLER SUPPORTS TO BE SINGLE AXLE TWO ROLLER PIPE SUPPORTS UNISTRUT PART NO. U-618 OR APPROVED EQUAL
- 14 COMPRESSED AIR PIPE TO BE SECURED WITH UNISTRUT PIPE CLAMP NO. P-1113 OR APPROVED EQUAL
- 15 ALL INSULATED PIPE LINES TO HAVE PROTECTIVE PIPE SADDLES AT ROLLER SUPPORTS AND CLEVIS TYPE HANGER SUPPORTS

GENERAL NOTES

- 1 ONLY AREAS SHOWN ENCLOSED AS A REVISION ON THIS DWG AND FOLLOWING DWGS INCLUDED IN RFSC # AZ 020
- 2 THIS DRAWING SHOWS THE OVERALL LAYOUT OF THE C-100 ADMINISTRATION BUILDING AND LOCATIONS OF C-101 CAPTIVA & C-102 HOSPITAL THE DIFFERENT AREAS ARE IDENTIFIED AND THE DWGS WHICH FOLLOW SHOW DETAIL OF THESE AREAS AND WORK TO BE PERFORMED
- 3 ASBESTOS INSULATION SHALL BE REMOVED FROM HVAC EQUIPMENT, DUCTWORK, STEAM & CONDENSATE PIPING AND WATER PIPING AS NOTED AND IDENTIFIED ON THE FOLLOWING DRAWINGS: THE HVAC EQUIPMENT, DUCTWORK, STEAM & CONDENSATE PIPING SHALL BE REINSULATED WITH FIBERGLASS INSULATION PER SUBCONTRACT SPECS. THE WATER PIPING SHALL NOT BE REINSULATED
- 4 FOR DRAWING LIST, SEE LSC 16403 B
- 5 CROSSHATCHED AREAS INDICATE INSULATION TO BE REMOVED. ALL INSULATION IS 2" THICK OR LESS

4	CA	EE	IE	MA	MB	GE	CE
REV	DATE	BY	CHKD	APP'D	DATE	BY	CHKD
1	11/15/91	WJ	WJ	WJ	11/15/91	WJ	WJ
2	11/15/91	WJ	WJ	WJ	11/15/91	WJ	WJ
3	11/15/91	WJ	WJ	WJ	11/15/91	WJ	WJ

RFSC # AZ-020
ESO-16403
CERTIFIED FOR CONSTRUCTION

BY: [Signature] DATE: 5/2/98

SYMBOLS

- UNISTRUT SUPPORT
- ANCHOR SUPPORT
- TWO CLEVIS TYPE HANGERS

REFERENCE DRAWINGS

- 10-M
- 11-M
- 12-M
- 13-M

C-100 BASEMENT AREA
KEY PLAN
SCALE 1/16" = 1'-0"

UNCLASSIFIED

REVIEWED FOR CLASSIFICATION
TWP 05/16/2014
UNCLASSIFIED

UNITED STATES
ATOMIC ENERGY COMMISSION

SMITH HINCHMAN & GRYLLS INC
ARCHITECTS & ENGINEERS
DETROIT, MICHIGAN

KEY PLAN
C-100 BASEMENT AREA
HVAC AND PIPING

DATE	BY	DATE	BY
11/15/91	WJ	11/15/91	WJ
11/15/91	WJ	11/15/91	WJ
11/15/91	WJ	11/15/91	WJ

8768

C-1 PLANT ADMINISTRATION C-100- BI-25-M SK-1