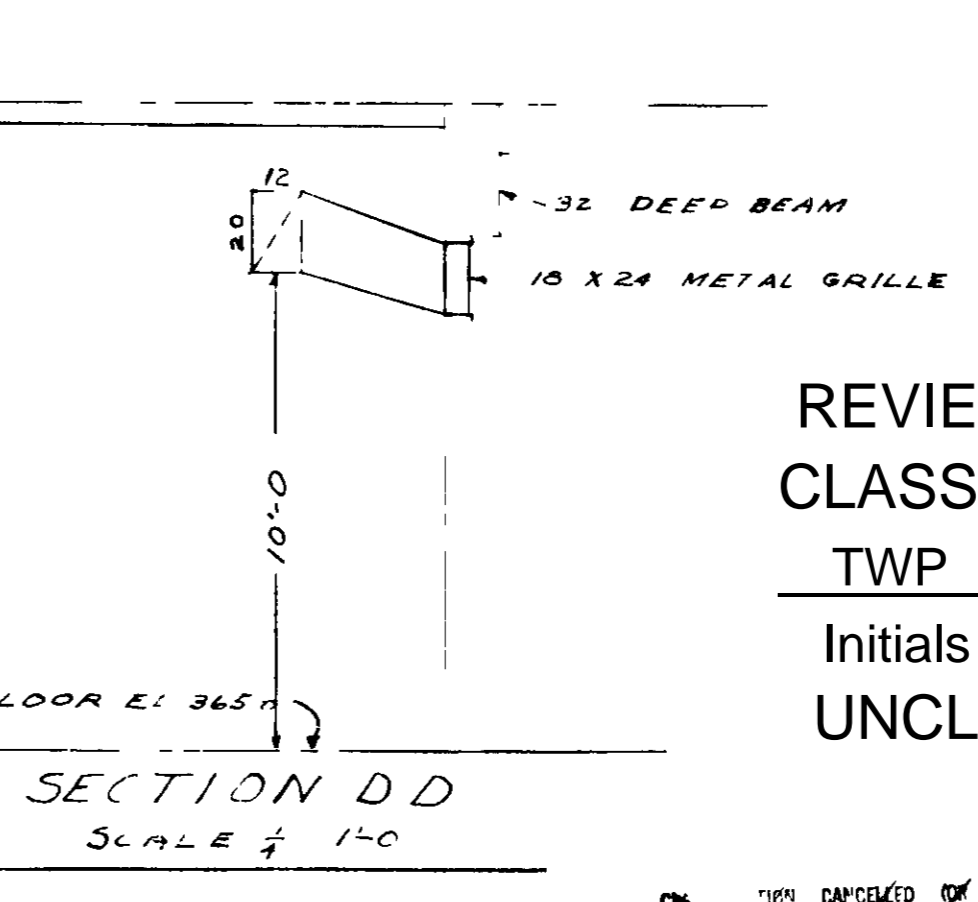
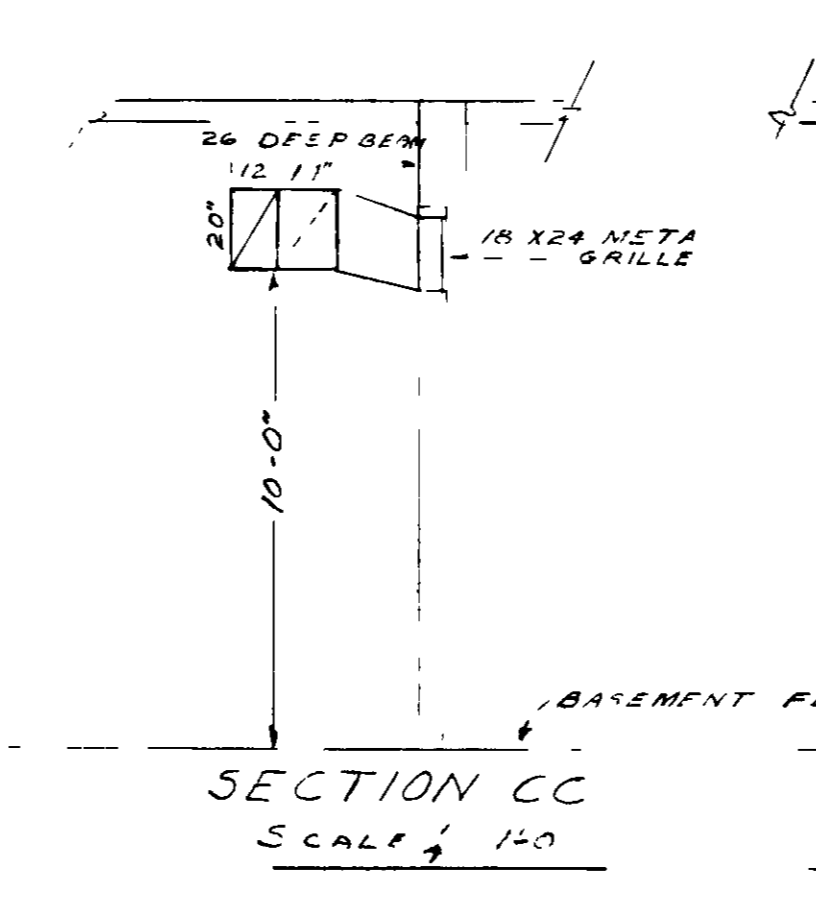
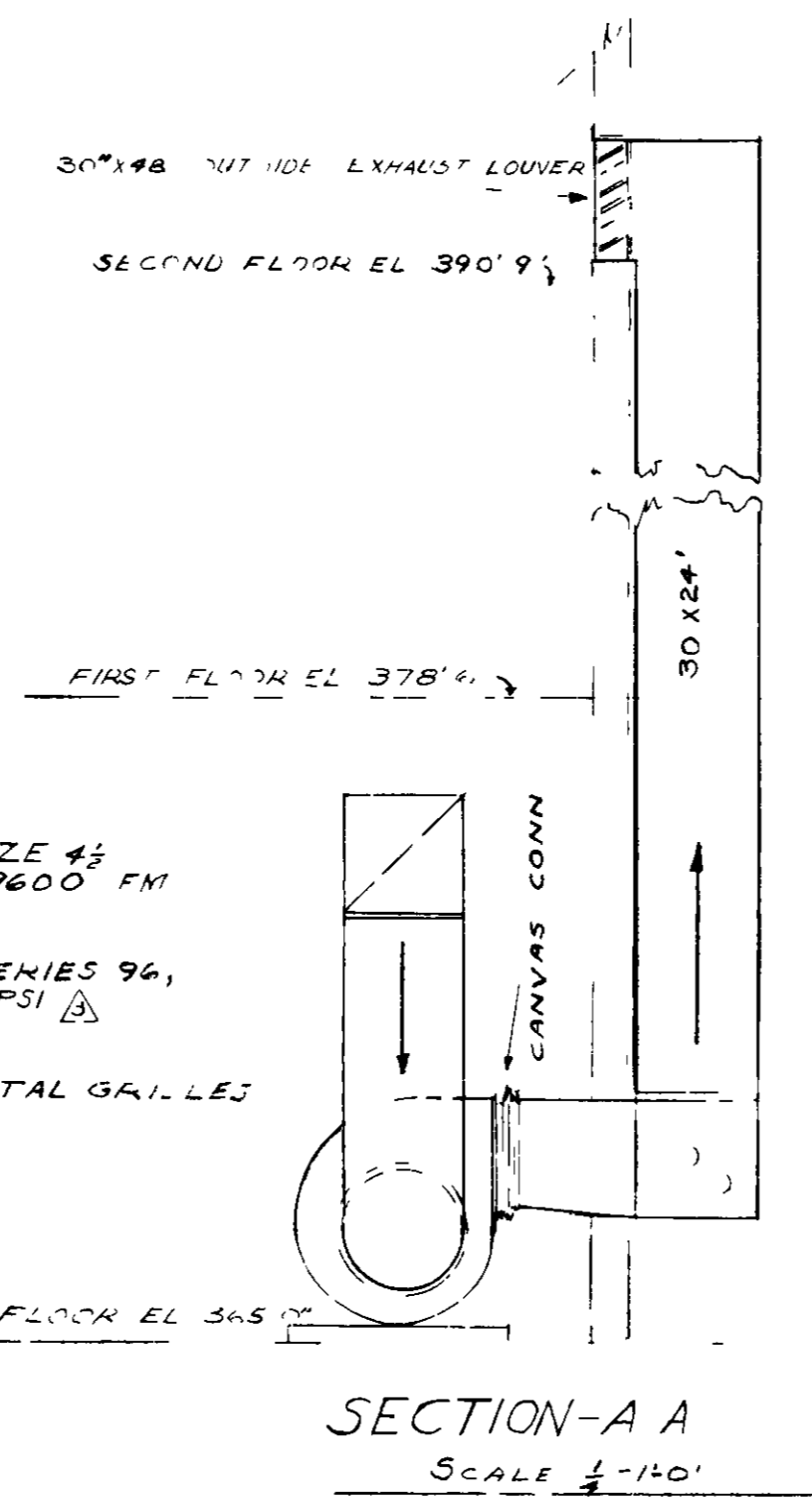


BUFFALO FAN, TYPE LL FAN, SIZE #3
OR APPROXIMATELY EQUAL, TO EXHAUST 9600 FM
8" 1/2" WITH 3/4" S.C. MOTOR 208/3/60
TRANS STEAM CO'S TYPE SLS SERIES 94,
OR APPROVED EQUAL STEAM AT 5 PSI
TUTTLE & BAILEY PLAIN LATTICE METAL GRILLES
NO 575E, OR APPROVED EQUAL



DEPARTMENT OF ENERGY DECLASSIFICATION REVIEW	
1ST REVIEWER	2. DETERMINATION
2ND REVIEWER	3. CLASSIFICATION RETAINED
AUTHORITY ADD	4. CLASSIFICATION CHANGED TO
	5. COORDINATE WITH
	6. CLASSIFICATION CANNOT BE
	7. OTHER SPECIFY

CLASSIFICATION CHANGED **Unclassified**
 Approved Classification Level and Group: **Unclassified**
 By Authority of: **Doc LTR 2-2-97**
 On: **11/16/95**
 Verified by: **Doc LTR 2-2-98**
 Date: **2-2-98**

BT Images, Inc
00000616

REVIEWED FOR
CLASSIFICATION
TWP 05/22/2014
Initials Date
UNCLASSIFIED

UNITED STATES ATOMIC ENERGY COMMISSION		
SMITH, HINCHMAN & GRYLLS, INC ARCHITECTS & ENGINEERS DETROIT 26, MICHIGAN		
DRAWING TITLE		
VENTILATING SYSTEMS EQUIPMENT ROOMS		
DESIGN BY DATE	DRAWING APPROVED DATE	DRAWING APPROVED DATE
R. A. WALKER 10-31-51	R. J. BROWNE 11-6-51	R. J. BROWNE 11-6-51
ARCHITECT ENGINEER	CARRIE CARBON, CHEM. DIV.	A. E. C. ENGINEER
DATE CHECKED	DATE	DATE
H. S.	T. J.	H. S.
IN CHARGE	DATE	DATE
W. J. WALKER	10-31-51	11-6-51
PROJECT	ADMINISTRATION	SHEET
"C" PLANT	C-100	BI-24-M