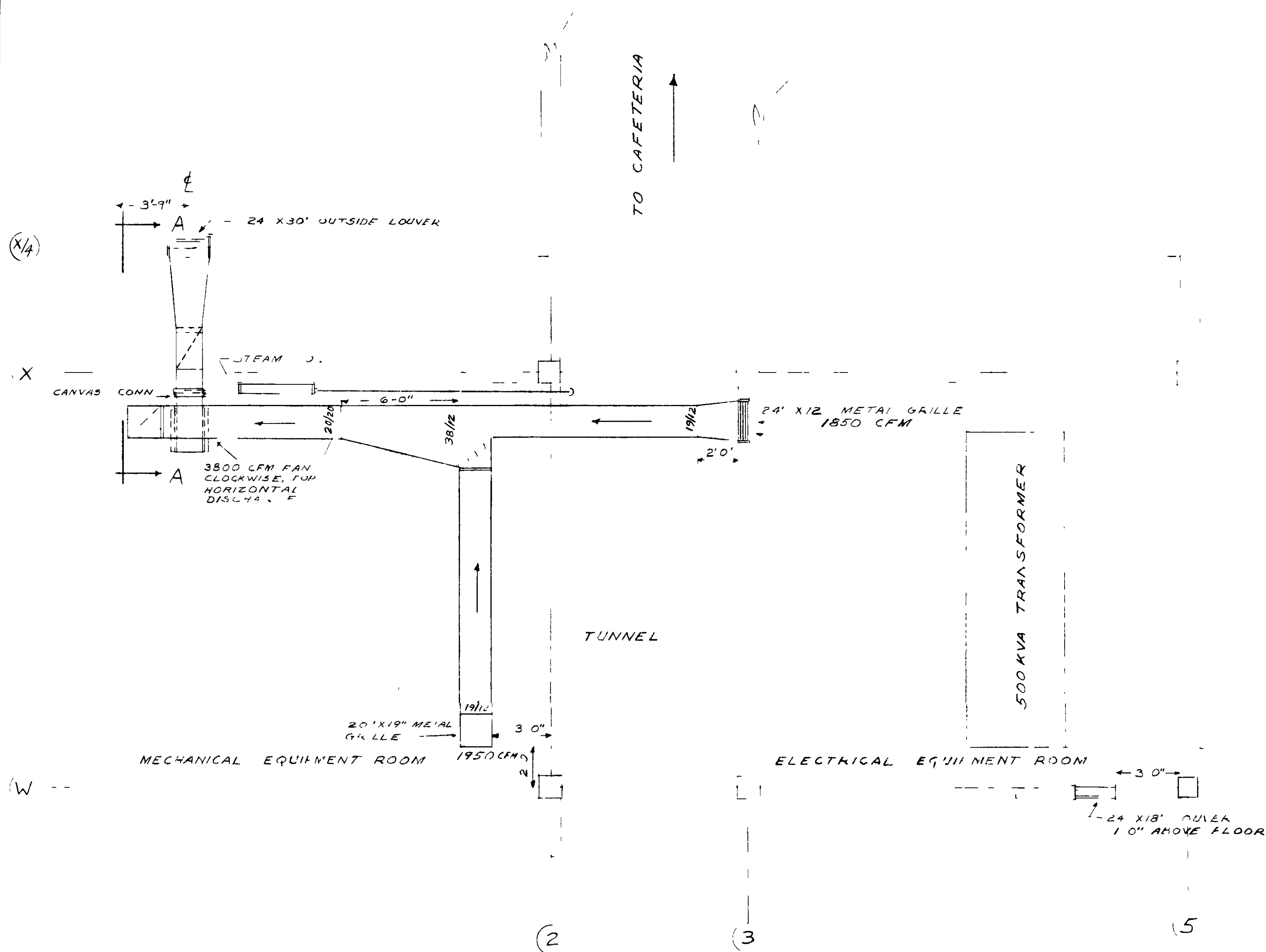


~~RESTRICTED~~
SECURITY INFORMATION

UNCLASSIFIED

Unclassified



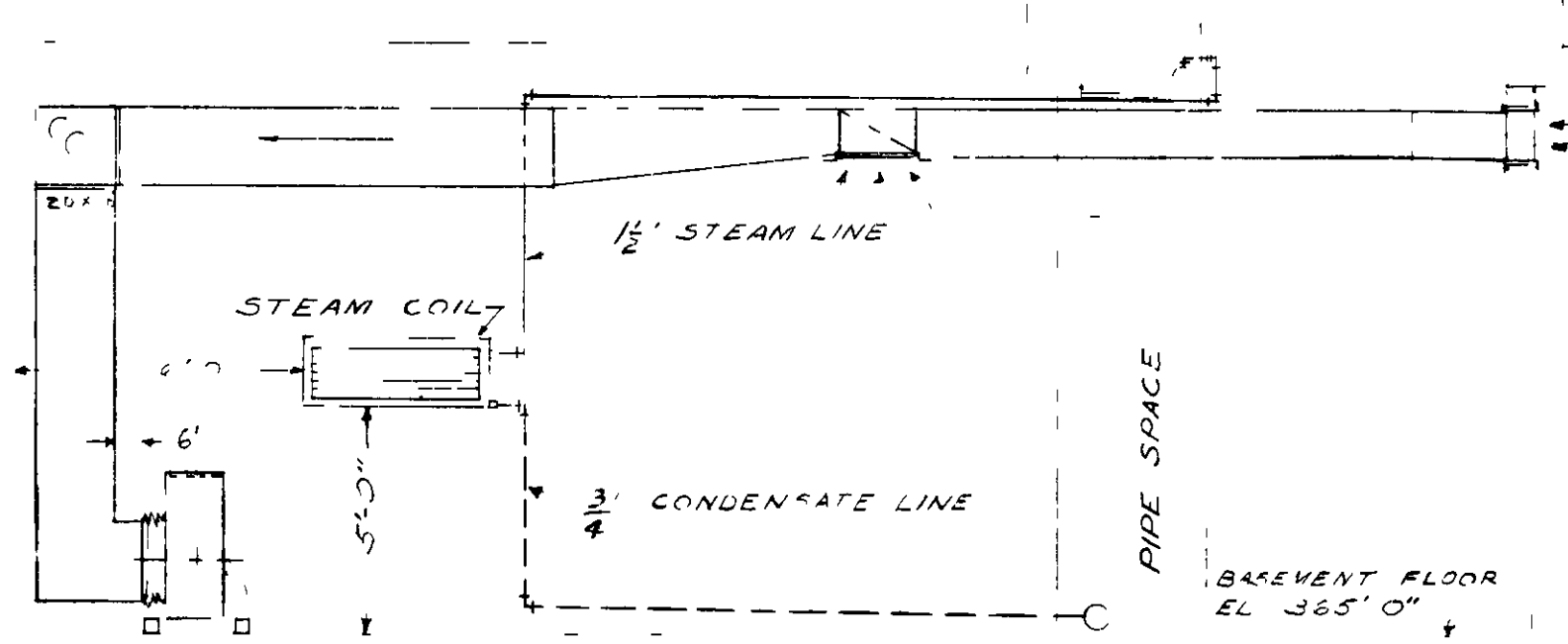
PLAN VIEW -- NW EQUIPMENT ROOMS
SCALE 1/4" = 1'-0"

1-BUFFALO FORGE TYPE "L" FAN SIZE 34" OR APPROX. EQ. 3/4 HP MOTOR 208/115 TO EXHAUST 3800 CFM @ 2" SP

1-TRANE STEAM COIL TYPE SD SERIES 96 OR APPROX. EQ. SIZE 14" X 12" DHP ROV. STEAM AT 2 PSI AND 103 POUNDS OF CONDENSATE PER HOUR

TUTTLE BAILEY PLAIN LATTICE METAL GRILLES NO. 575E OR APPROX. EQ.

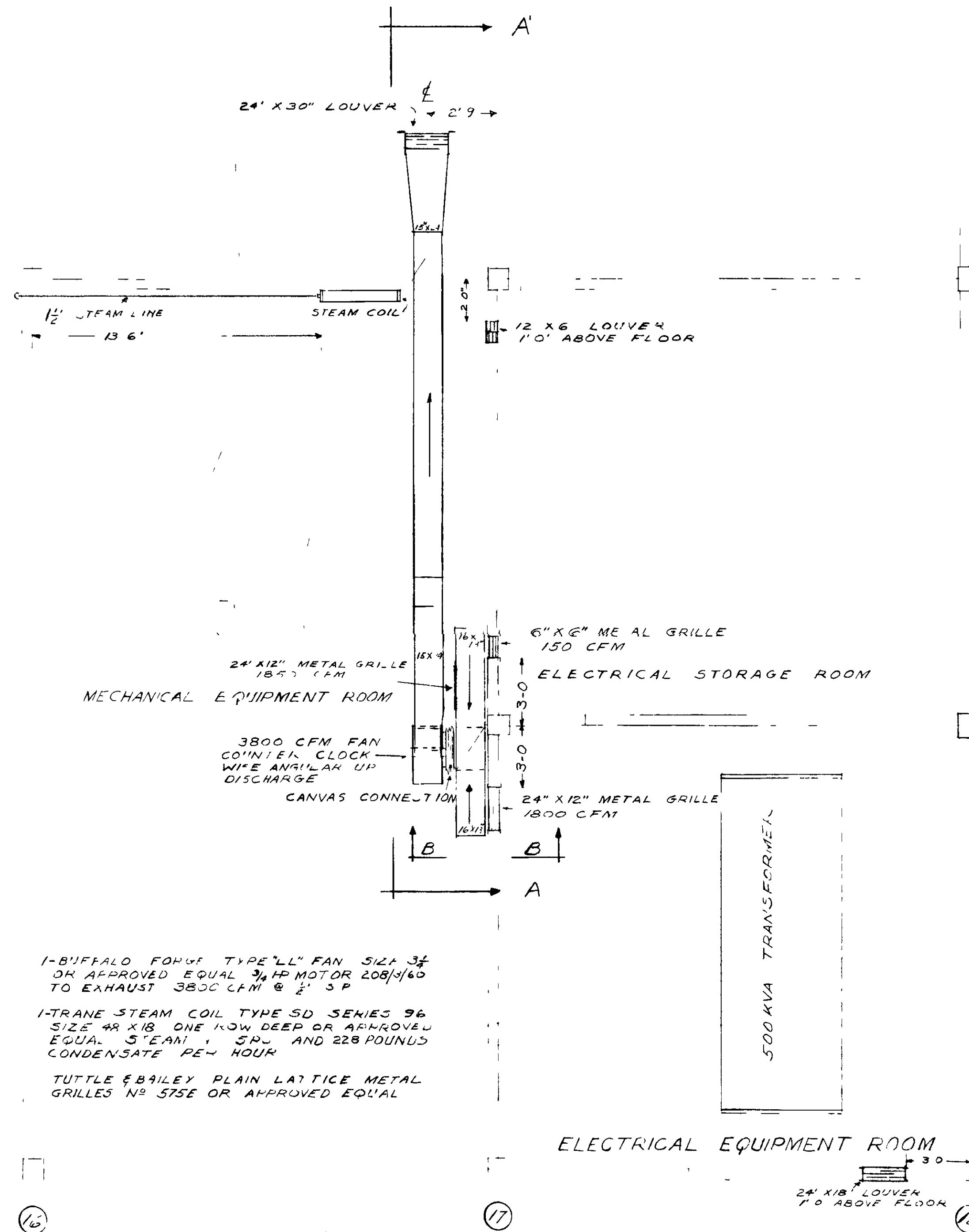
20" X 24" OUTSIDE LOUVER TOP SIDE TO BE AT SAME ELEVATION AS FIXED LOUVER INTAKE SEE SHEET BI-5-M



ELEVATION
SCALE 1/4" = 1'-0"

SECTION A-A
SCALE 1/4" = 1'-0"

SECTION B-B
SCALE 1/4" = 1'-0"



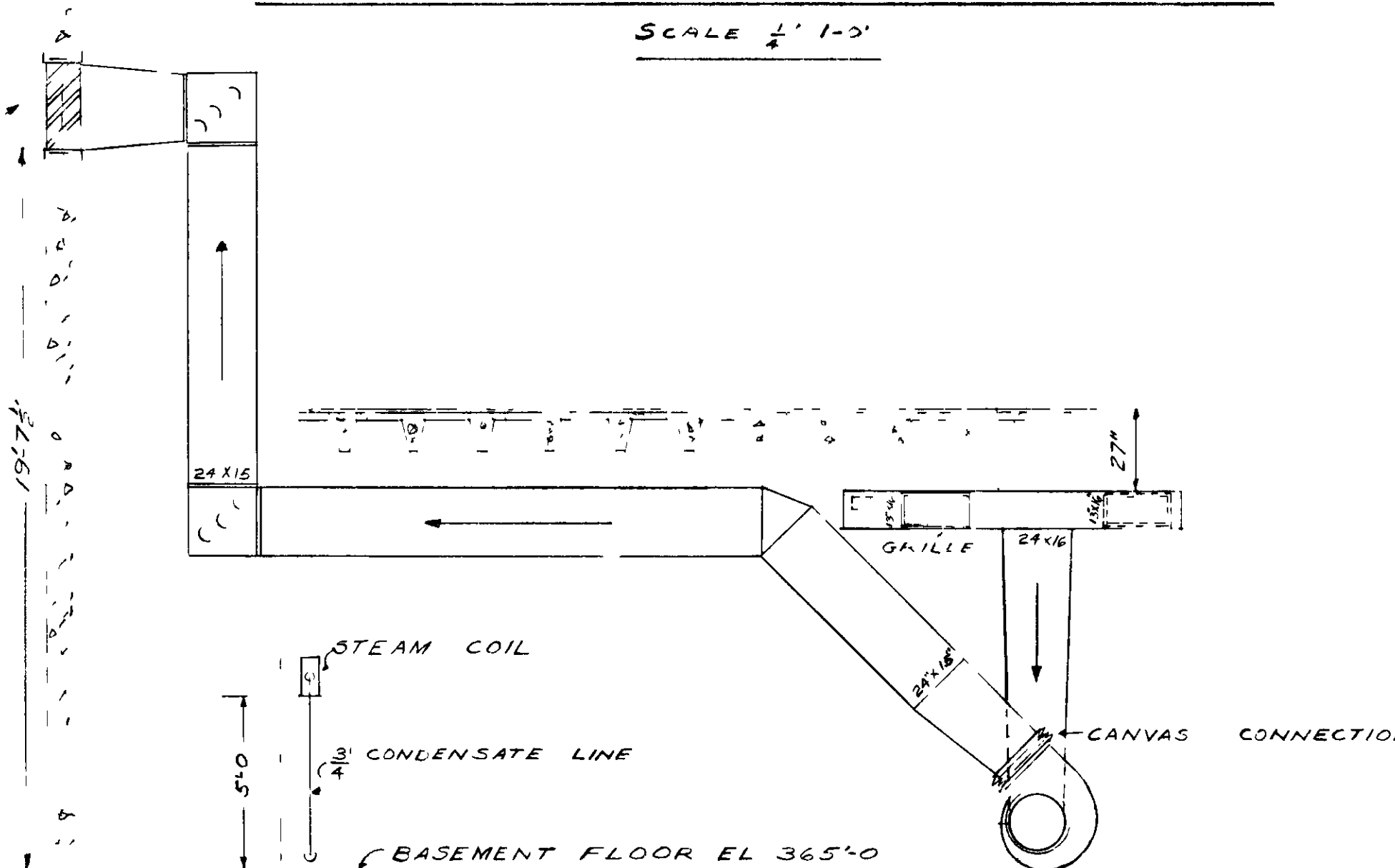
PLAN VIEW NE EQUIPMENT ROOMS
SCALE 1/4" = 1'-0"

1-BUFFALO FORGE TYPE "L" FAN SIZE 34" OR APPROX. EQ. 3/4 HP MOTOR 208/115 TO EXHAUST 3800 CFM @ 2" SP

1-TRANE STEAM COIL TYPE SD SERIES 96 OR APPROX. EQ. SIZE 14" X 12" DHP ROV. STEAM AT 2 PSI AND 103 POUNDS OF CONDENSATE PER HOUR

TUTTLE BAILEY PLAIN LATTICE METAL GRILLES NO. 575E OR APPROX. EQ.

30" X 24" OUTSIDE LOUVER BOTTOM SIDE TO BE AT SAME ELEVATION AS FIXED LOUVER INTAKE SEE SHEET BI-7-M



SECTION A-A
SCALE 1/4" = 1'-0"

1ST REVIEWER	DATE	DETERMINATION	REASON	CLASSIFICATION
		CLASSIFICATION OBTAINED		
		CLASSIFICATION OBTAINED		
		CLASSIFICATION OBTAINED		
		CLASSIFICATION OBTAINED		
		CLASSIFICATION OBTAINED		
		CLASSIFICATION OBTAINED		
		CLASSIFICATION OBTAINED		

CLASSIFICATION CHANGED TO **Unclassified**

APPROVED BY: *[Signature]* DATE: 05/22/14

BY AUTHORITY OF: *[Signature]* DATE: 05/22/14

REVIEWED FOR CLASSIFICATION
TWP 05/22/2014
Initials Date
UNCLASSIFIED

This material contains information affecting the national defense of the United States within the meaning of the Espionage Laws, Title 18, U.S.C., Sec. 793 and 794, the transmission or revelation of which in any manner to an unauthorized person is prohibited by law.

UNITED STATES ATOMIC ENERGY COMMISSION			
SMITH, HINCHMAN & GRYLLS, INC. ARCHITECTS & ENGINEERS DETROIT 26 MICHIGAN			
DRAWING TITLE			
VENTILATING SYSTEMS EQUIPMENT ROOMS			
3	11/16/53	AS BUILT	R J BROWN 11-6-53
2	11/7/51	CONSTRUCTION	"B" W 11-6-51
1	12/31/51	APPROVAL	A C W 11-6-51
REV. NO.	DATE	ISSUED FOR	BY (APP. DATE)
UNITED STATES ATOMIC ENERGY COMMISSION SMITH, HINCHMAN & GRYLLS, INC. ARCHITECTS & ENGINEERS DETROIT 26 MICHIGAN DRAWING TITLE VENTILATING SYSTEMS EQUIPMENT ROOMS			
DRAWN APPROVED DATE	DRAWING APPROVED DATE	DRAWING APPROVED DATE	
<i>[Signature]</i>	RAWALKER 11-6-51	R J BROWN 11-6-51	
ARCHITECT ENGINEER	CANBIDE CARBON CHEM. DIV.	A. E. C. ENGINEER	
DATE CHECKED	DATE	DATE	
10/1/51	11/1/51	11/1/51	
IN CHARGE	DATE	CHECKED	DATE
<i>[Signature]</i>	11-6-51	<i>[Signature]</i>	11-6-51
PROJECT	BUILDING	ADMINISTRATION	8768
"C" PLANT	C-100	BI-23-M	

BT Images, Inc
00000615

~~RESTRICTED~~
SECURITY INFORMATION

UNCLASSIFIED

~~RESTRICTED~~
SECURITY INFORMATION