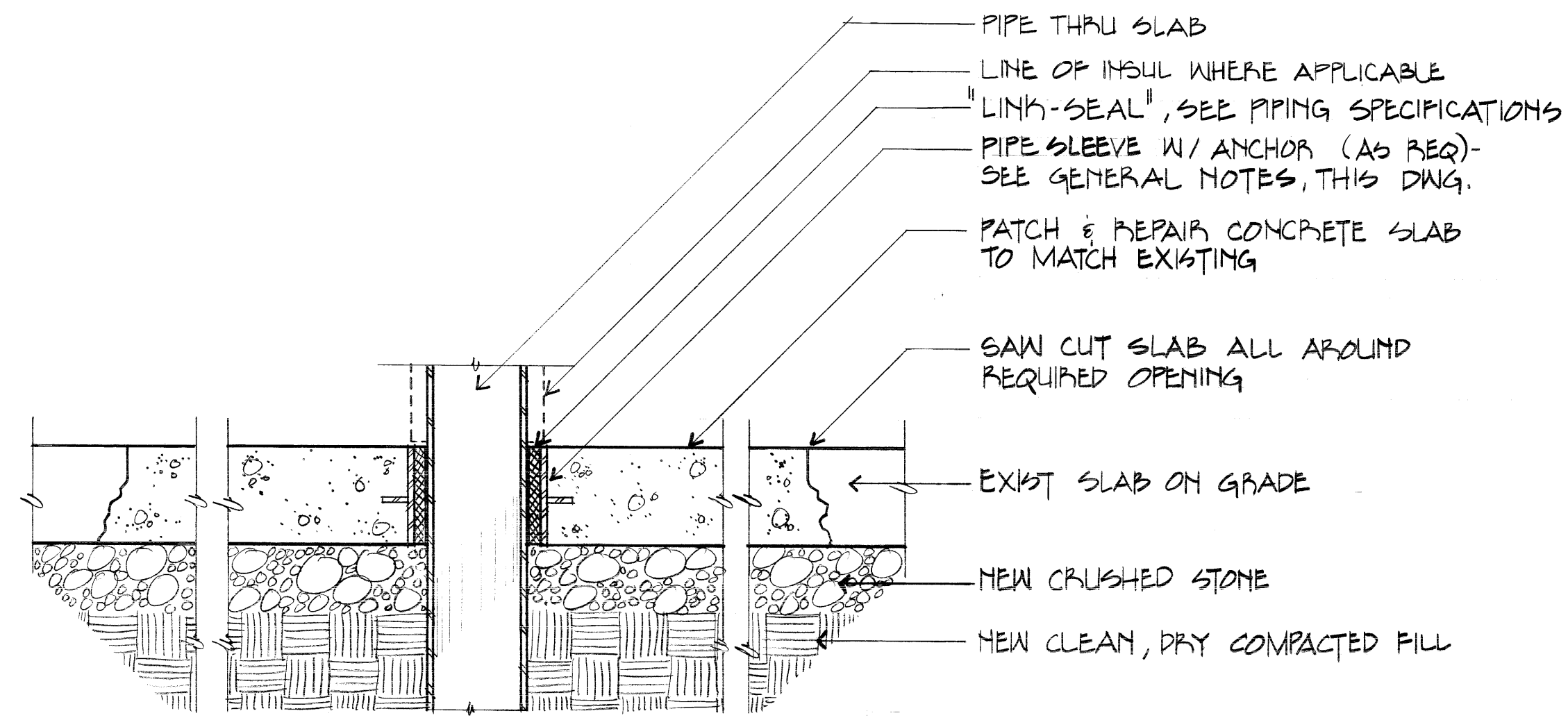
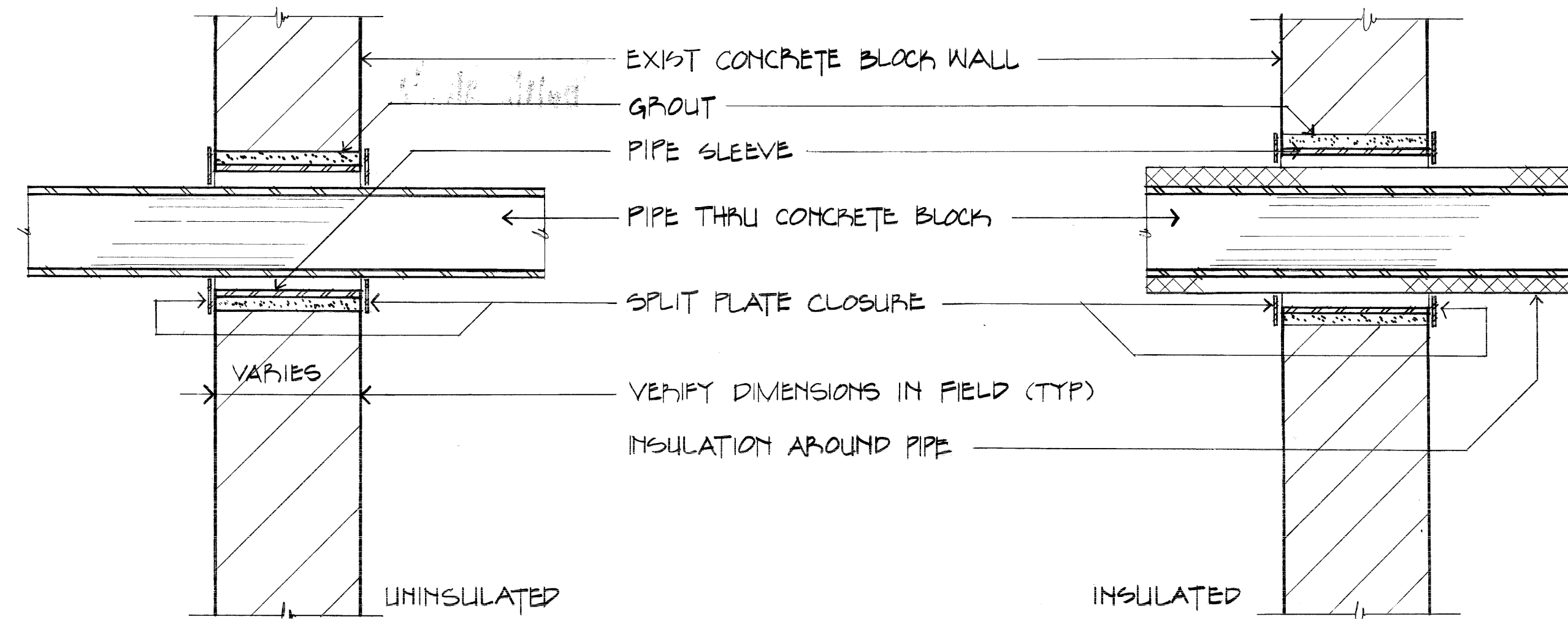
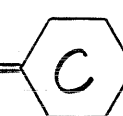


Unclassified



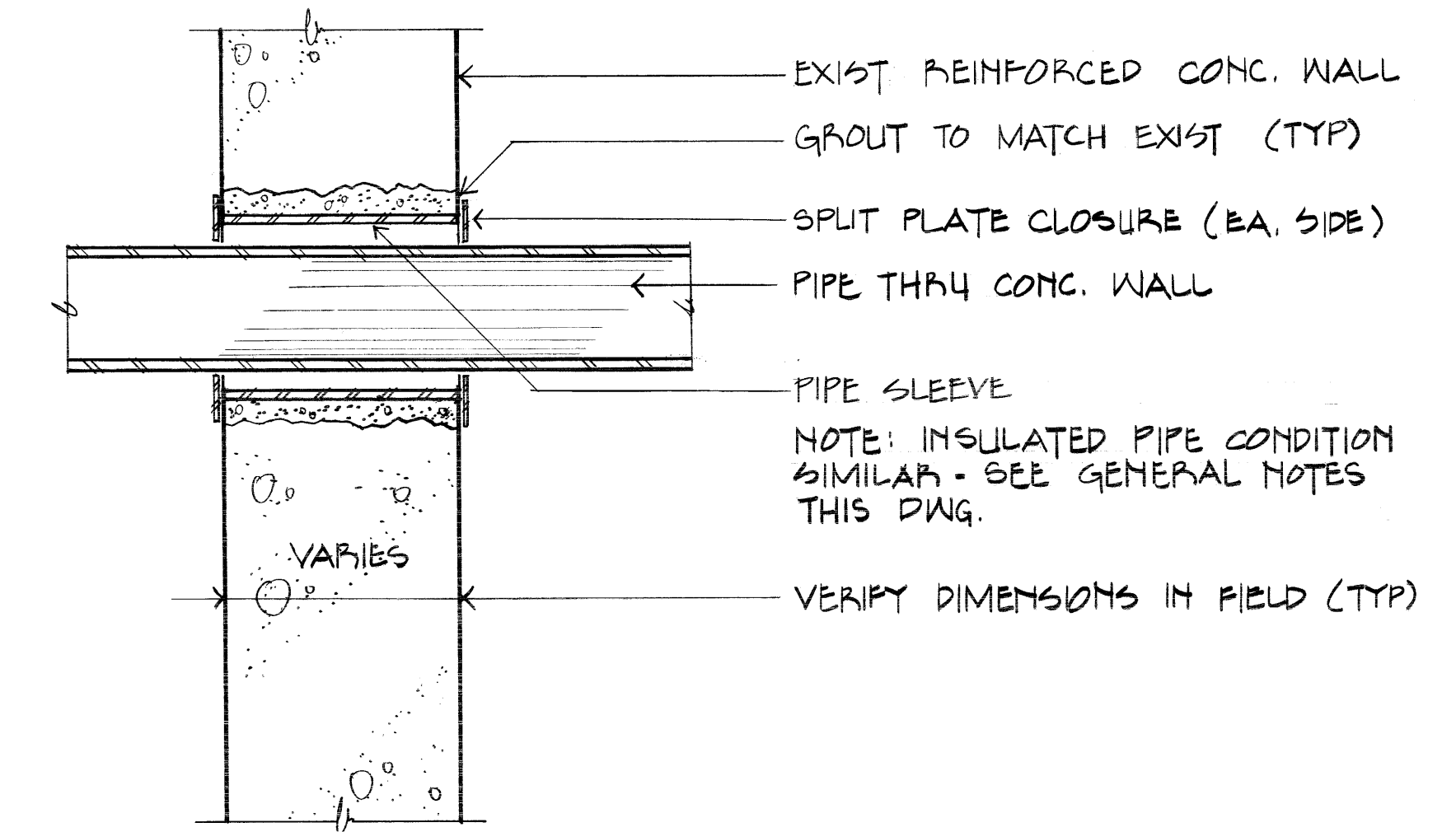
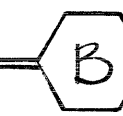
PIPE THRU SLAB ON GRADE

N.T.S.



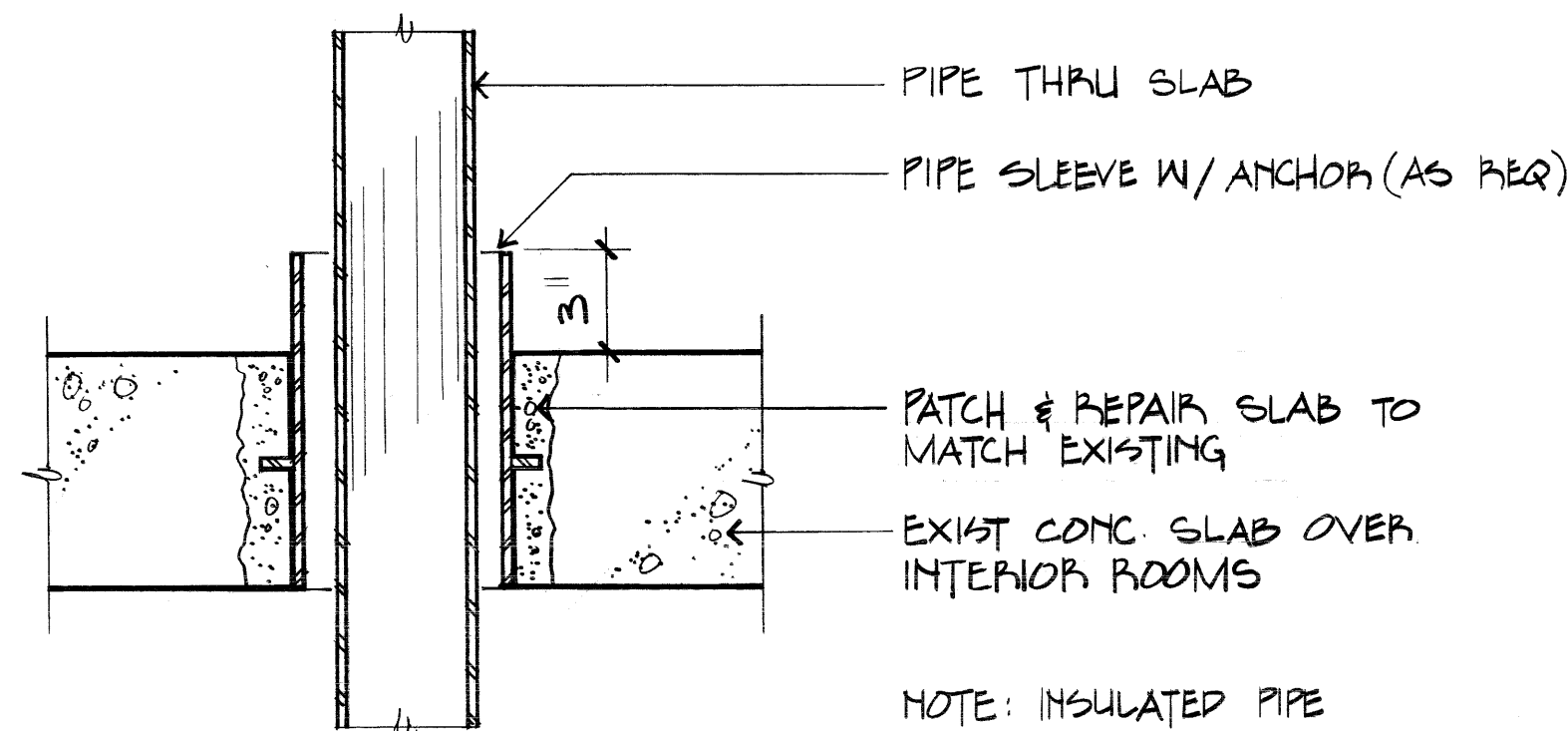
PIPE THRU CONCRETE BLOCK WALL

N.T.S.



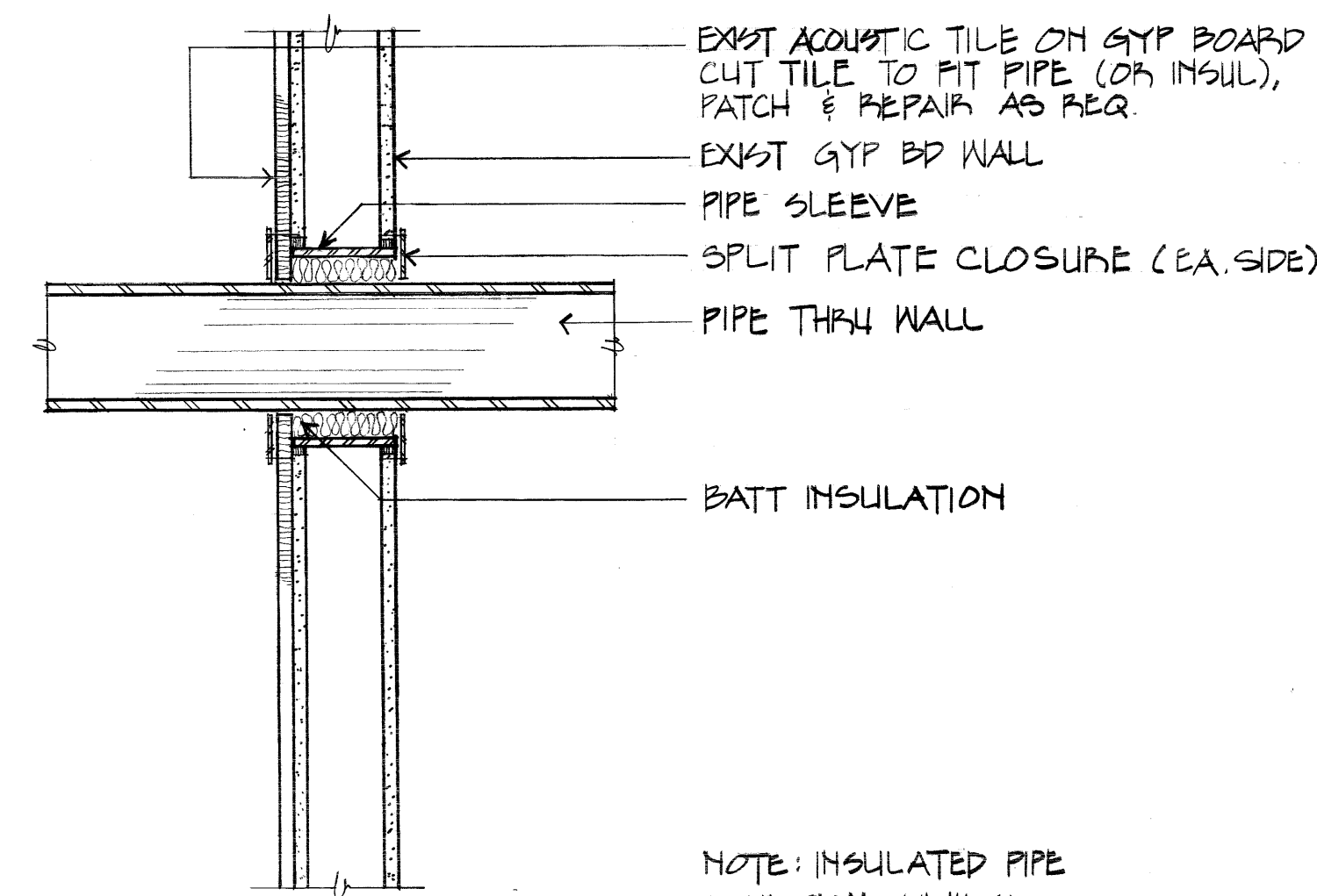
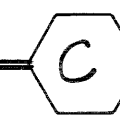
PIPE THRU REINFORCED CONCRETE WALL

N.T.S.



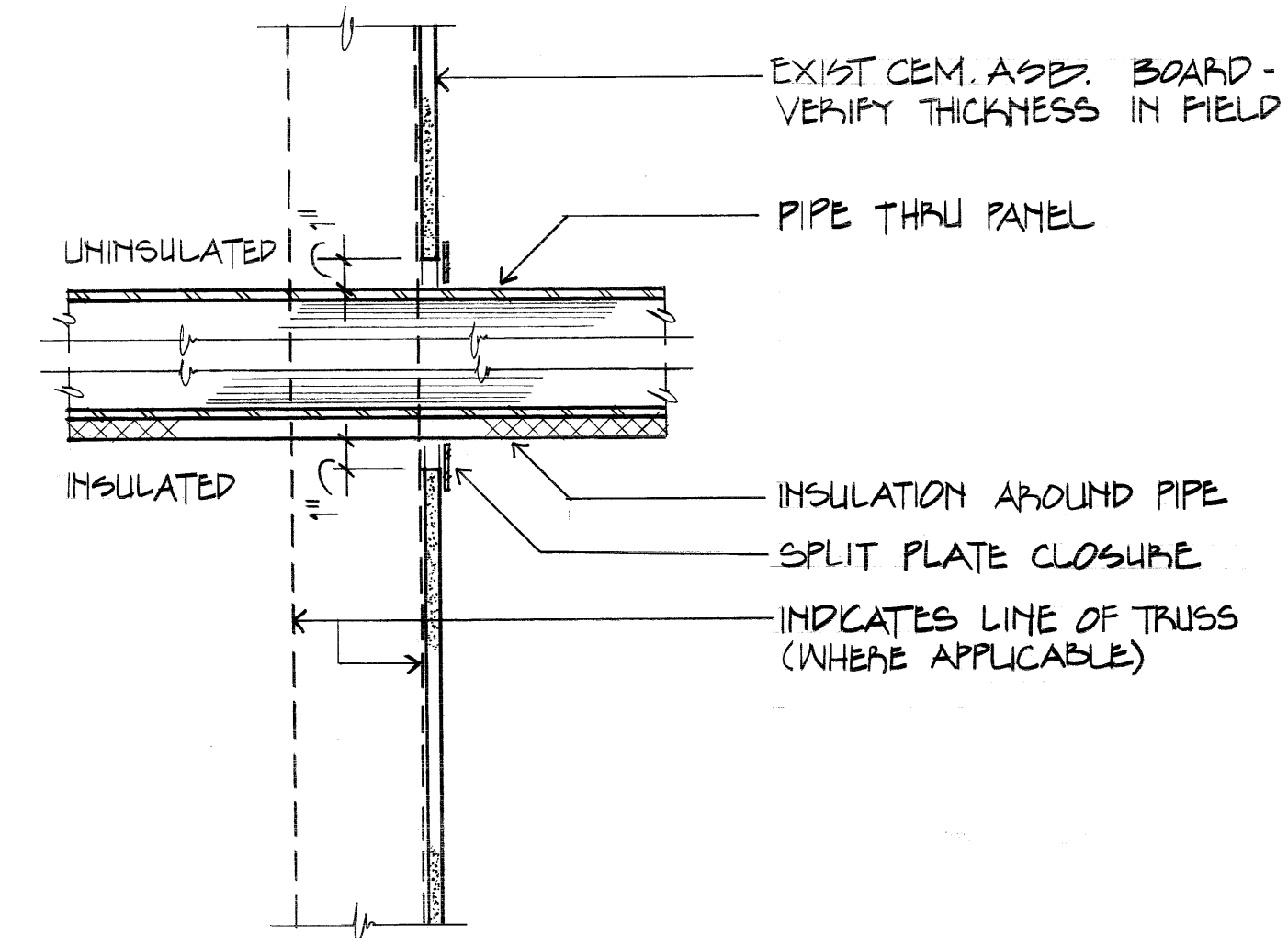
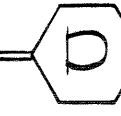
PIPE THRU REINFORCED CONCRETE SLAB

N.T.S.



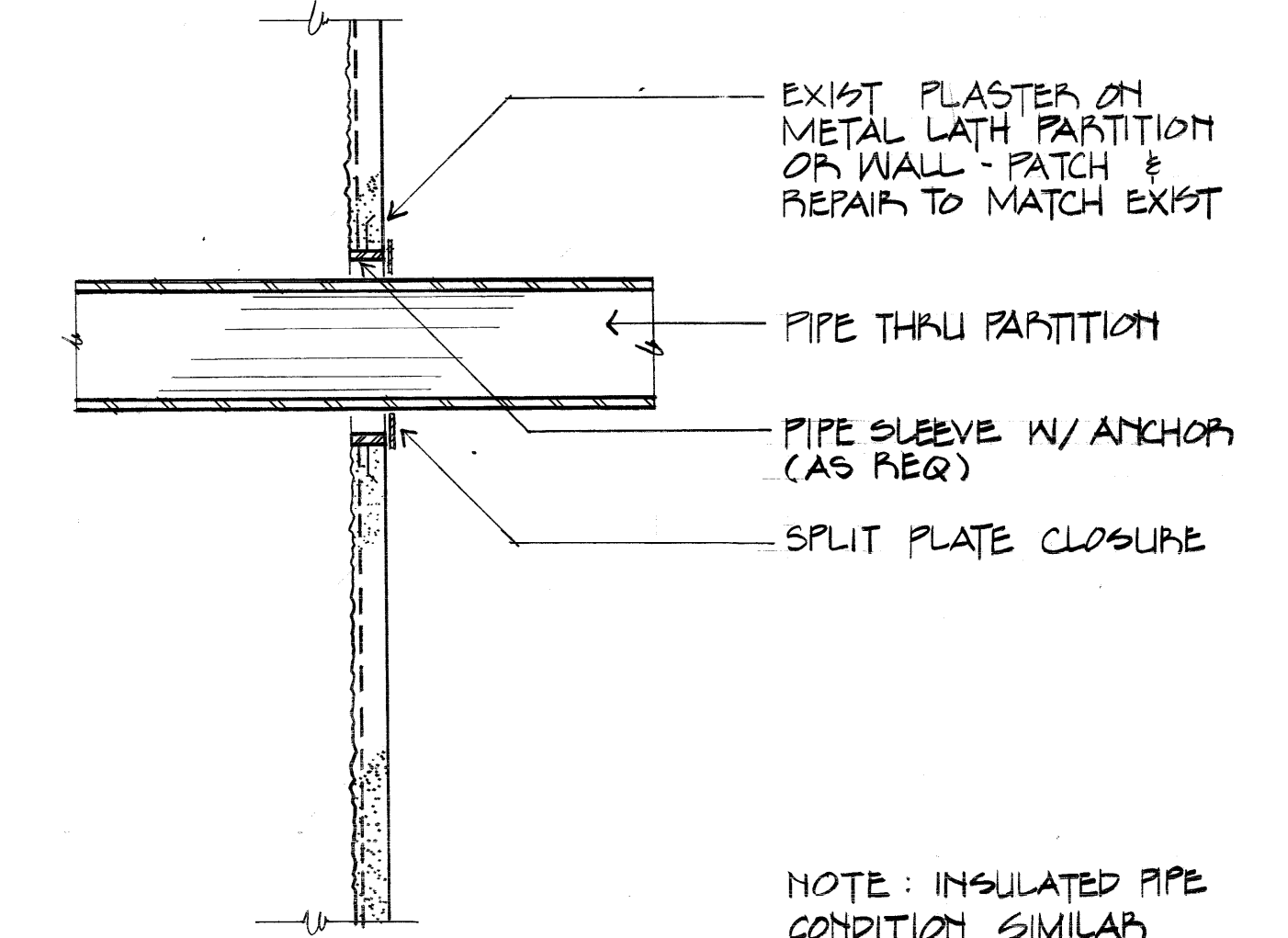
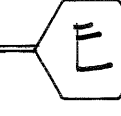
PIPE THRU GYP BD / ACOUSTICAL TILE WALL

N.T.S.



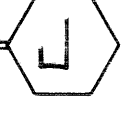
PIPE THRU CEMENT ASBESTOS BD

N.T.S.



PIPE THRU PLASTER / METAL LATH

N.T.S.



GENERAL NOTES

- 1) VERIFY ALL WALL & PARTITION PENETRATIONS IN FIELD - SEE HVAC DRAWINGS FOR ACTUAL PIPE SIZES, & LOCATIONS
- 2) SEE PIPING SPECIFICATIONS FOR SIZES OF PIPE SLEEVES, & SPLIT PLATE CLOSURE MATERIALS
- 3) SEE HVAC DRAWINGS FOR SUBGRADE PENETRATION DETAILS

REVIEWED FOR CLASSIFICATION
 Initials: *WJ* Date: 1/26/98
 UNCLASSIFIED

REVIEWED FOR CLASSIFICATION
 Initials: *AJJ* Date: 05/05/2014
 UNCLASSIFIED

BT Images, Inc.
 00021534

Hugo Looman

IC	AS BUILT	REV. NO.	DATE	BY	APP. BY
0	CERTIFIED FOR CONSTRUCTION	1	3-27-79	W.D.	W.D.
ISSUE PURPOSE (FPG-6279)		AS	OPERATOR	DOE	APPROVAL
UNITED STATES DEPARTMENT OF ENERGY A. M. KINNEY, INC. CONSULTING ENGINEERS CINCINNATI, OHIO ARCHITECTURAL DOE CONTRACT NO. EW-78-CO-5886 A/E PROJECT NO. 02434					
MISCELLANEOUS DETAILS					
SUBMITTED - DATE	APPROVAL RECOMMENDED - DATE	DRAWING APPROVED - DATE			
2-16-79	W.D. BRICKEEN 3-27-79	D.G. CRAFTS 3/27/79			
DRAWN	DATE	CHECKED	DATE	SCALE	DOE-ENGINEER
W. WILSON	1-3-79	G. BRABENDER	2-27-79	AS	
1	48	49	50	PLANT	CHIEF
				PADUCAH	
PROJECT	DRAWING NUMBER	REV. NO.			
PROCESS WASTE	A5E-14951-0007	1C			
HEAT UTILIZATION					