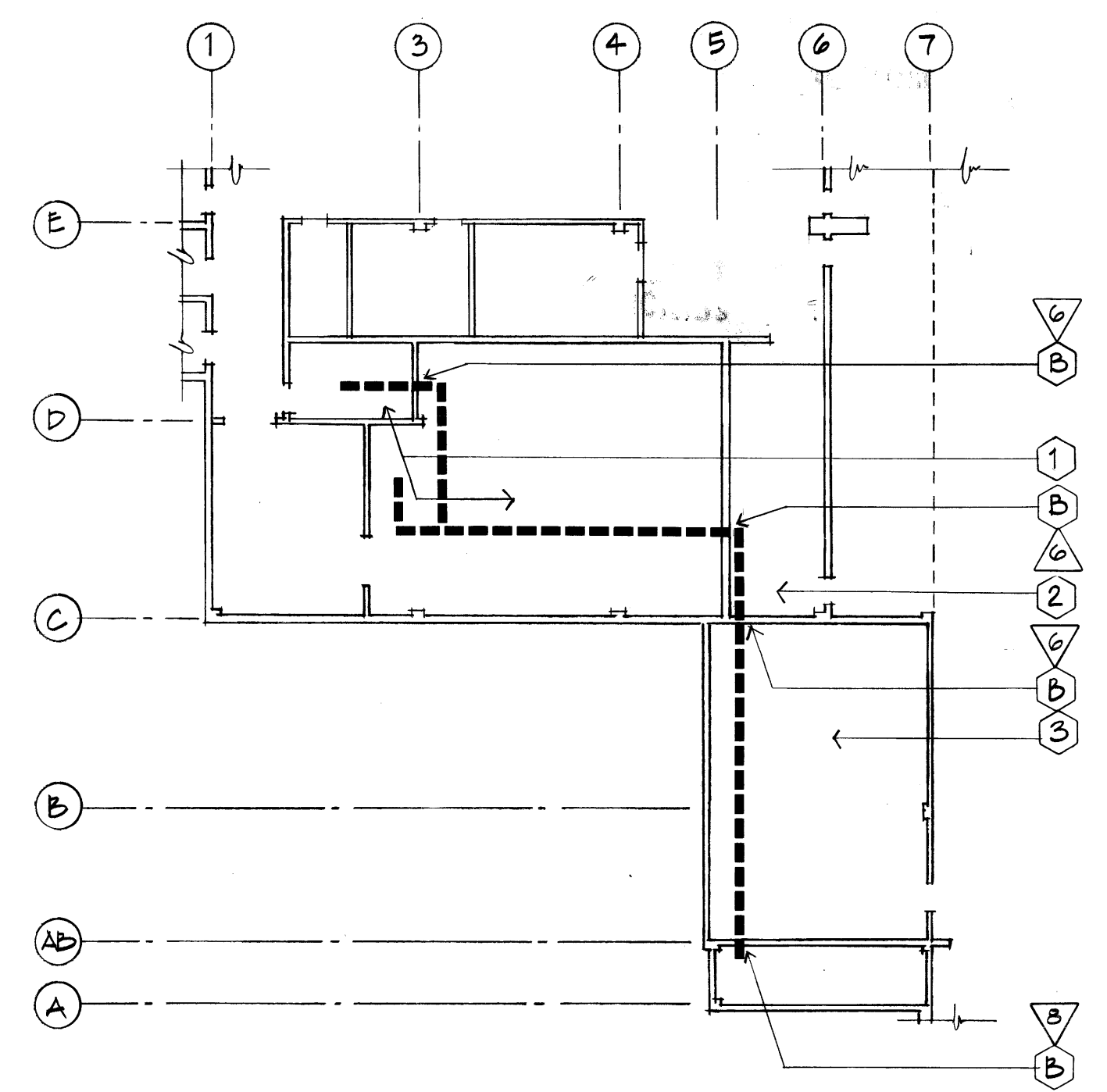
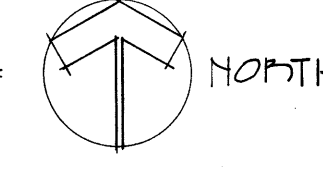
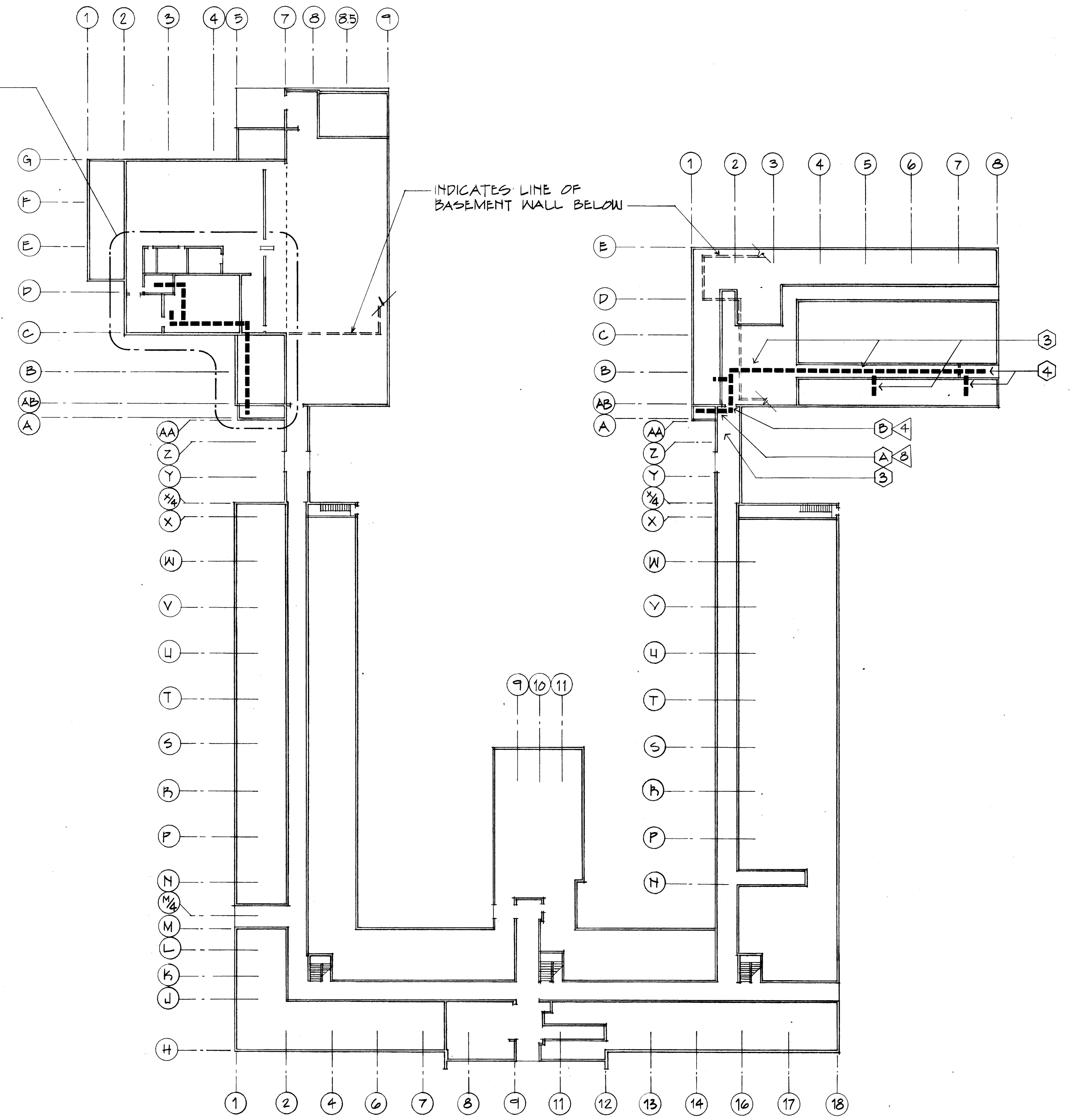


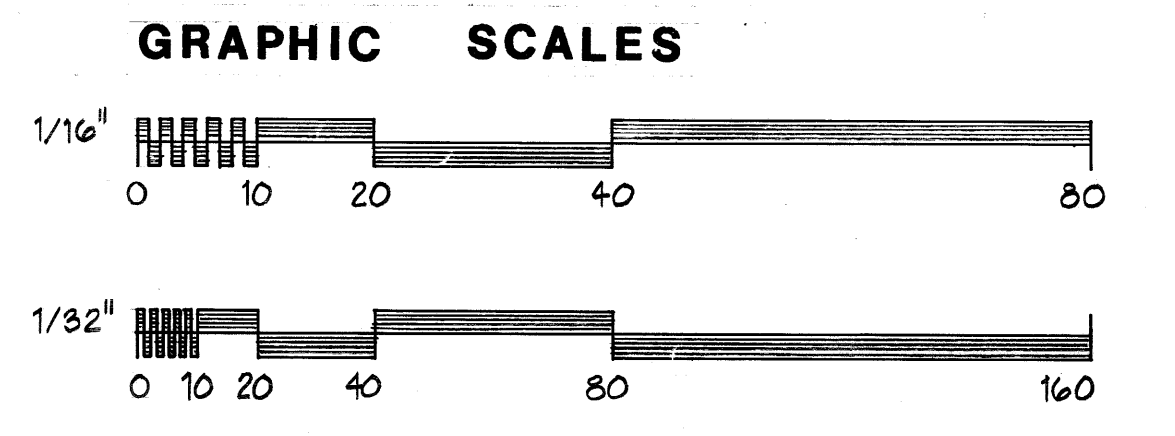
BASEMENT PLAN ~ C-101, C-100, C-102
 1/32" = 1'-0"



PARTIAL FIRST FLOOR PLAN - C-101
 1/16" = 1'-0"



FIRST FLOOR PLAN
 1/32" = 1'-0"



BT Images, Inc.
 00021528

REVIEWED FOR CLASSIFICATION
 Initials: [Signature] Date: 1/20/98
 UNCLASSIFIED

REVIEWED FOR CLASSIFICATION
 Initials: [Signature] Date: 06/13/2014
 UNCLASSIFIED

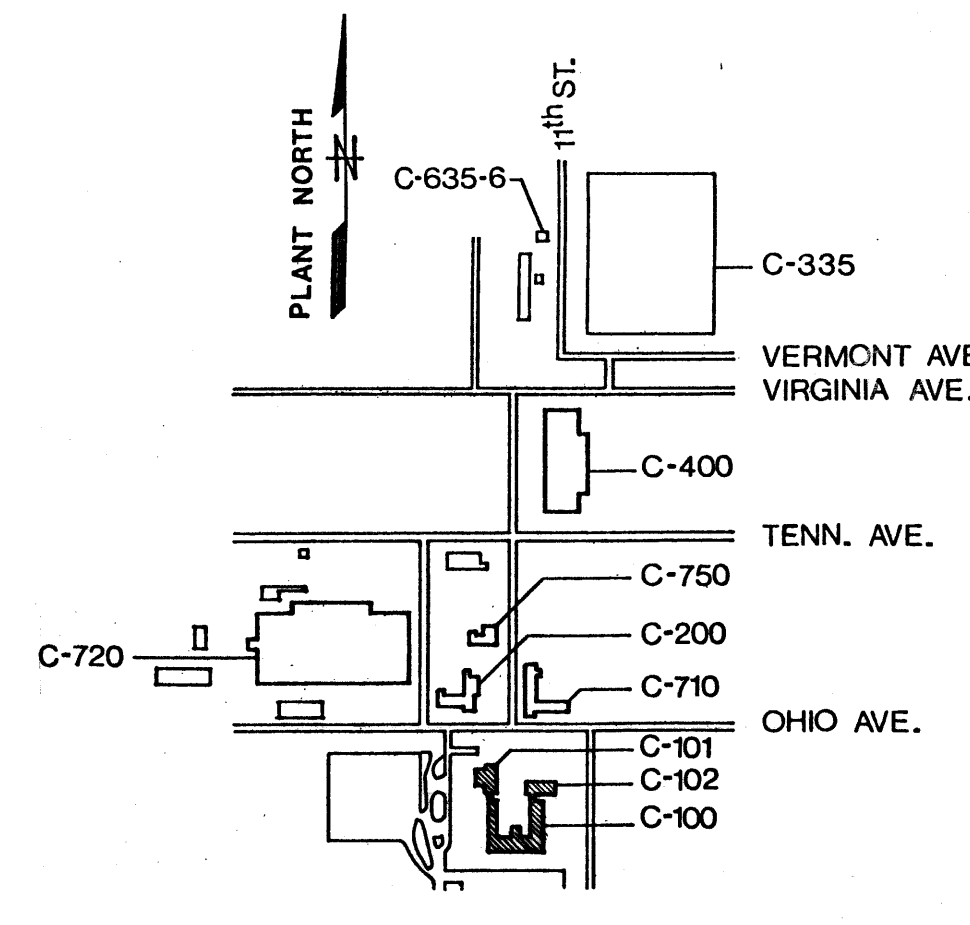
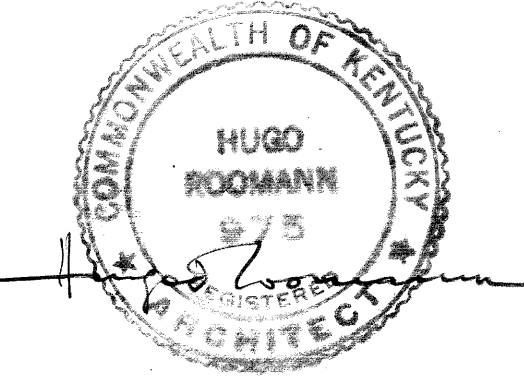
GENERAL NOTES

- SEE PNG #ASE-14951-0007 FOR TYPICAL PENETRATION DETAILS
- SEE HVAC PNGS FOR SUB-GRADE PENETRATION DETAILS

KEY TO MATERIALS & SYMBOLS

- ① PENETRATION OF REINFORCED CONCRETE
- ② PENETRATION OF CONCRETE BLOCK
- ③ EXPOSED CONSTRUCTION ABOVE
- ④ PIPING RUNS ABOVE 1'-0" x 1'-0" CONCEALED GRID, PERFORATED METAL CEILING TILE
- ⑤ PIPING RUNS ABOVE 1'-0" x 1'-0" CONCEALED GRID, ACOUSTICAL TILE CEILING
- ⑥ PIPING RUNS ABOVE 2'-0" x 4'-0" LAY-IN, ACOUSTICAL TILE CEILING

--- INDICATES PIPING RUNS - SEE HVAC DRAWINGS FOR ACTUAL LOCATIONS
 <--- INDICATES WALL THICKNESS IN INCHES - VERIFY IN FIELD PRIOR TO FABRICATION OF SLEEVES



KEY PLAN
 NOT TO SCALE

1C AS BUILT		DATE: 3/27/79	SCALE: AS NOTED
O CERTIFIED FOR CONSTRUCTION		DATE: 3/27/79	SCALE: AS NOTED
ISSUE PURPOSE (PPAC-0279)			
UNITED STATES DEPARTMENT OF ENERGY			
A. M. KINNEY, INC.			
DOE CONTRACT NO. EW76-C05-006 A/E PROJECT NO. 02436			
ARCHITECTURAL BUILDINGS C-100, C-101, & C-102 FLOOR PLANS			
SUBMITTED - DATE	APPROVAL RECOMMENDED - DATE	DRAWING APPROVED - DATE	
2-16-79	3-27-79	3/27/79	
DRAWN BY: W. WILSON	CHECKED BY: G. BRABENDER	DATE: 2-2-79	SCALE: AS NOTED
1	48	50	PLANT PADUCAH
PROJECT: PROCESS WASTE HEAT UTILIZATION		DRAWING NUMBER: ASE-14951-0001	REV. NO.: 1C

MICROFILMED